



# cGAS Rabbit mAb

<b>Catalog No</b>	YP-rAb-17920
<b>Isotype</b>	IgG
<b>Reactivity</b>	Human
<b>Applications</b>	WB,IHC,IF,ELISA
<b>Gene Name</b>	MB21D1 cGAS C6orf150
<b>Protein Name</b>	M21D1
<b>Purification Process</b>	Protein A
<b>Specificity</b>	Endogenous
<b>Formulation</b>	PBS, 50% glycerol, 0.05% Proclin 300, 0.05%BSA
<b>Source</b>	Monoclonal, Rabbit,IgG
<b>Dilution</b>	IHC 1:100-1:500; WB 1:1000-1:5000; IF 1:200-1:1000; ELISA 1:5000-1:20000; Note: For IHC, we suggest antigen retrieval with TE buffer pH 9.0
<b>Concentration</b>	0.5 mg/ml
<b>Purity</b>	≥90%
<b>Storage Stability</b>	-15° C to -25° C/1 year(Do not lower than -25° C)
<b>Synonyms</b>	
<b>Observed Band</b>	62kD
<b>Calculated Molecular Weight</b>	62kD
<b>Cell Pathway</b>	Cytoplasm, Membrane
<b>Tissue Specificity</b>	Expressed in the monocytic cell line THP1.
<b>Function</b>	
<b>Background</b>	Enables several functions, including 2',3'-cyclic GMP-AMP synthase activity; molecular condensate scaffold activity; and phosphatidylinositol-4,5-bisphosphate binding activity. Involved in several processes, including defense response to symbiont; intracellular signal transduction; and regulation of defense response. Located in nuclear body; plasma membrane; and site of double-strand break. Is active in cytosol and nucleus. [provided by Alliance of Genome Resources, Feb 2025]
<b>matters needing attention</b>	Avoid repeated freezing and thawing!

杭州臻优品生物科技有限公司

热销产品:

蛋白、一抗、抗体对、ELISA试剂盒、生化试剂盒  
CCK8试剂盒、QPCR检测试剂盒

检测服务:

ELISA检测及定制服务 | 生化检测 | PCR、QPCR检测 | WB检测  
ICO-IP检测 | 切片 | 染色 | 免疫组化 | 免疫荧光 | 透射电镜全套  
| 宏基因组、转录组、基因组、蛋白组、代谢组测序



关注官网

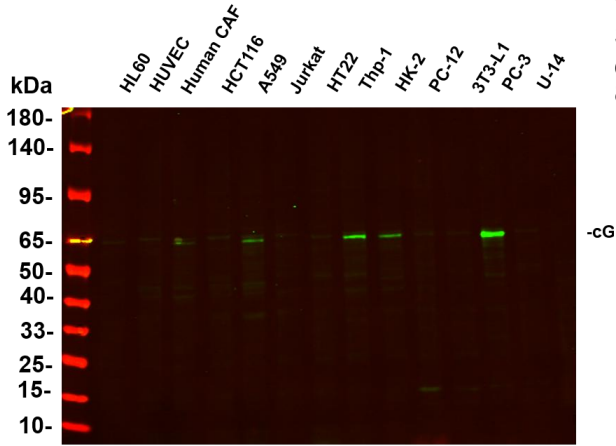


关注客服

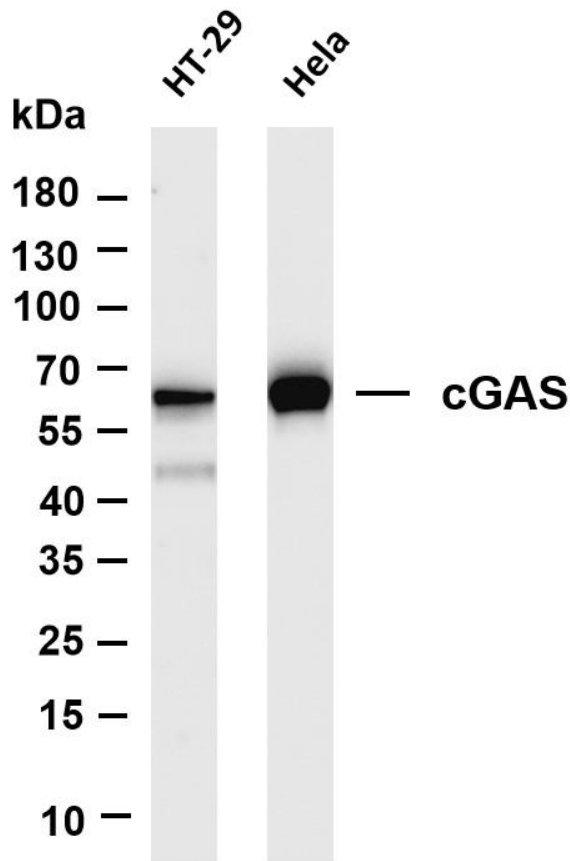


### Usage suggestions

This product can be used in immunological reaction related experiments. For more information, please consult technical personnel.



Various whole cell lysates were separated by 4-20% SDS-PAGE, and the primary antibody was used at 4°C, over night with a 1:2500 dilution. The Dylight 800-conjugated Goat anti-Rabbit antibody



Various whole cell lysates were separated by 4-20% SDS-PAGE, and the membrane was blotted with anti-cGAS antibody. The HRP-conjugated Goat anti-Rabbit IgG(H + L) antibody was used to detect the antibody. Lane 1: HT-29 Lane 2: HeLa Predicted band size: 62kDa Observed band size: 62kDa

## 杭州臻优品生物科技有限公司

### 热销产品:

蛋白、一抗、抗体对、ELISA试剂盒、生化试剂盒  
CCK8试剂盒、QPCR检测试剂盒

### 检测服务:

ELISA检测及定制服务 | 生化检测 | PCR、QPCR检测 | WB检测  
ICO-IP检测 | 切片 | 染色 | 免疫组化 | 免疫荧光 | 透射电镜全套  
| 宏基因组、转录组、基因组、蛋白组、代谢组测序



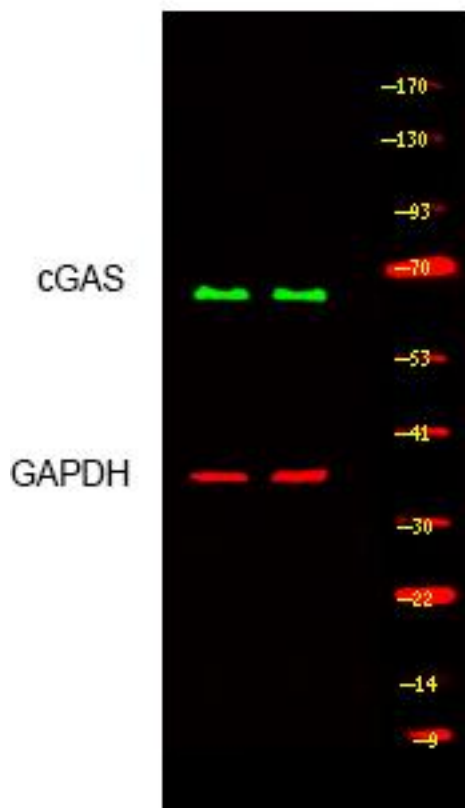
关注官网



关注客服



Western blot analysis of lysates from MCF-7 and THP1 cells, primary antibody was diluted at 1:1000, 4° over night



## 杭州臻优品生物科技有限公司

### 热销产品:

蛋白、一抗、抗体对、ELISA试剂盒、生化试剂盒  
CCK8试剂盒、QPCR检测试剂盒

### 检测服务:

ELISA检测及定制服务 | 生化检测 | PCR、QPCR检测 | WB检测  
ICO-IP检测 | 切片 | 染色 | 免疫组化 | 免疫荧光 | 透射电镜全套  
| 宏基因组、转录组、基因组、蛋白组、代谢组测序



关注官网



关注客服