



# MIF Rabbit mAb

<b>Catalog No</b>	YP-rAb-17918
<b>Isotype</b>	IgG
<b>Reactivity</b>	Human,Mouse,Rat
<b>Applications</b>	WB,IHC,IF,ELISA
<b>Gene Name</b>	MIF
<b>Protein Name</b>	Macrophage migration inhibitory factor
<b>Purification Process</b>	Protein A
<b>Specificity</b>	Endogenous
<b>Formulation</b>	PBS, 50% glycerol, 0.05% Proclin 300, 0.05%BSA
<b>Source</b>	Monoclonal, Rabbit,IgG
<b>Dilution</b>	IHC 1:3000-1:10000; WB 1:1000-1:5000; IF 1:200-1:1000; ELISA 1:5000-1:20000; Note: For IHC, we suggest antigen retrieval with TE buffer pH 9.0
<b>Concentration</b>	0.5 mg/ml
<b>Purity</b>	≥90%
<b>Storage Stability</b>	-15° C to -25° C/1 year(Do not lower than -25° C)
<b>Synonyms</b>	MIF ; GLIF ; MMIF ; Macrophage migration inhibitory factor ; MIF ; Glycosylation-inhibiting factor ; GIF ; L-dopachrome isomerase ; L-dopachrome tautomerase ; Phenylpyruvate tautomerase
<b>Observed Band</b>	13kD
<b>Calculated Molecular Weight</b>	13kD
<b>Cell Pathway</b>	Cytoplasm
<b>Tissue Specificity</b>	Brain,Lens,Liver,Lung,Platelet,Skin
<b>Function</b>	Catalytic activity:Keto-phenylpyruvate = enol-phenylpyruvate.,Disease:Genetic variations in MIF are associated with susceptibility to systemic juvenile rheumatoid arthritis [MIM:604302]. Systemic juvenile rheumatoid arthritis is juvenile chronic arthritis associated with severe, debilitating, extraarticular features, and occasionally fatal complications. Despite medical treatment, many children still experience early joint destruction, necessitating surgical replacement.,Function:The expression of MIF at sites of inflammation suggest a role for the mediator in regulating the function of macrophage in host defense. Also acts as a phenylpyruvate tautomerase.,similarity:Belongs to the MIF family.,subunit:Homotrimer. Interacts with COPS5 and BNIPL.,





## Background

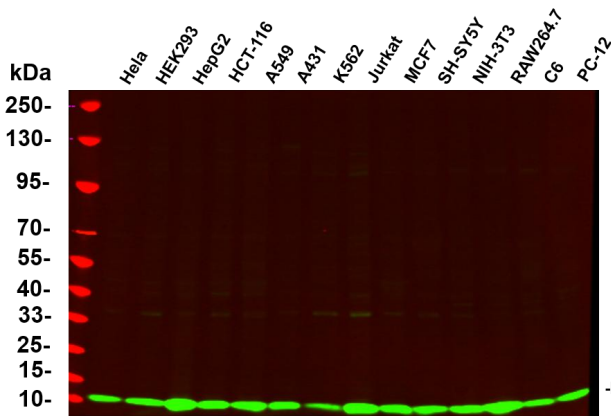
This gene encodes a lymphokine involved in cell-mediated immunity, immunoregulation, and inflammation. It plays a role in the regulation of macrophage function in host defense through the suppression of anti-inflammatory effects of glucocorticoids. This lymphokine and the JAB1 protein form a complex in the cytosol near the peripheral plasma membrane, which may indicate an additional role in integrin signaling pathways. [provided by RefSeq, Jul 2008],

## matters needing attention

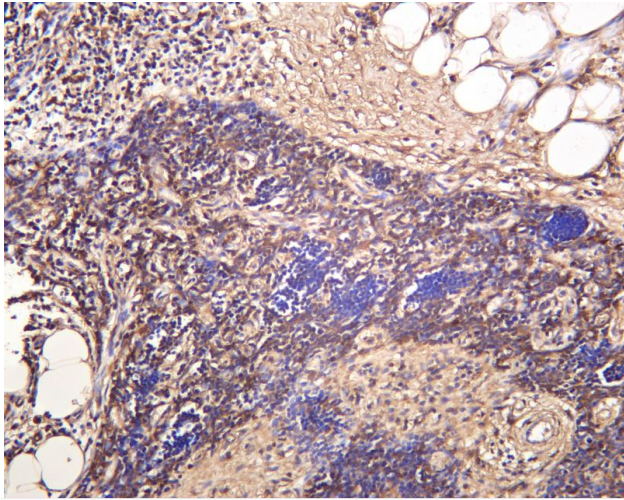
Avoid repeated freezing and thawing!

## Usage suggestions

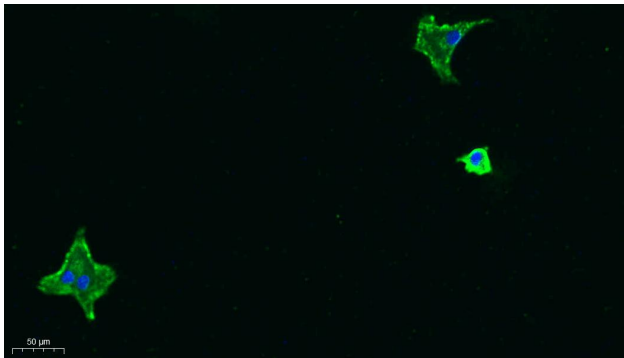
This product can be used in immunological reaction related experiments. For more information, please consult technical personnel.



Various whole cell lysates were separated by 4-20% SDS-PAGE, and the primary antibody was used at 4 °C, over night with a 1:5000 dilution . The Dylight 800-conjugated Goat anti-Rabbit antibody

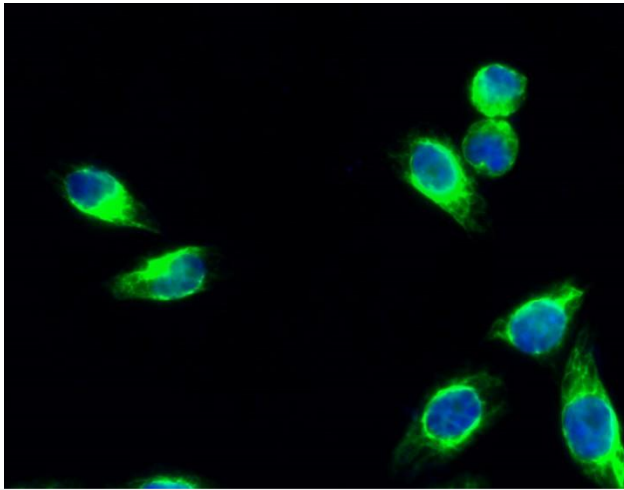


Human thymus was stained with anti-MIF rabbit antibody

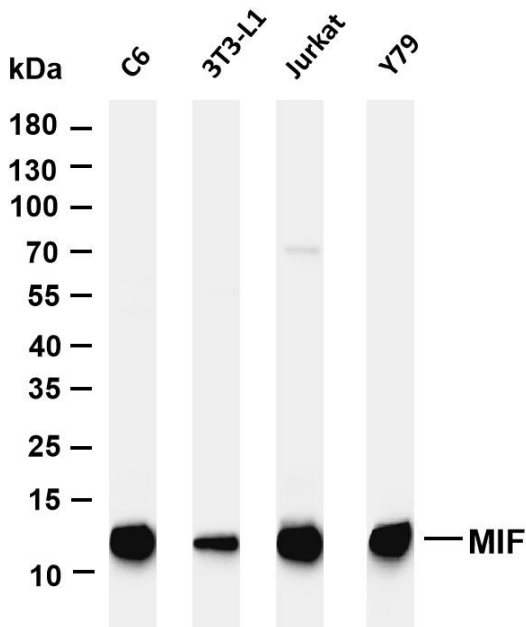


Immunofluorescence analysis of A549. 1,primary Antibody was diluted at 1:200(4 °C overnight). 2, Goat Anti Rabbit IgG (H&L) - Alexa Fluor 488 Secondary antibody was diluted at 1:1000(room temperature, 50min).3, DAPI(blue) 10min.





Immunofluorescence analysis of HeLa cell. 1, MIF Antibody (green) was diluted at 1:200 (4° overnight). 2, Goat Anti Rabbit Alexa Fluor 488 Catalog: RS3211 was diluted at 1:1000 (room temperature, 50min). 3 DAPI (blue) 10min.



Various whole cell lysates were separated by 4-20% SDS-PAGE, and the membrane was blotted with anti-MIF antibody. The HRP-conjugated Goat anti-Rabbit IgG(H + L) antibody was used to detect the antibody. Lane 1: C6 Lane 2: 3T3-L1 Lane 3: Jurkat Lane 4: Y79 Predicted band size: 13kDa Observed band size: 13kDa

