



CD14 Rabbit mAb

Catalog No	YP-rAb-17913
Isotype	IgG
Reactivity	Human,Mouse,Rat
Applications	WB,IHC,IF,ELISA
Gene Name	CD14
Protein Name	CD14
Purification Process	Protein A
Specificity	Endogenous
Formulation	PBS, 50% glycerol, 0.05% Proclin 300, 0.05%BSA
Source	Monoclonal, Rabbit,IgG
Dilution	IHC 1:2000-1:5000; WB 1:1000-1:5000; IF 1:200-1:1000; ELISA 1:5000-1:20000; Note: For IHC, we suggest antigen retrieval with TE buffer pH 9.0
Concentration	0.5 mg/ml
Purity	≥90%
Storage Stability	-15° C to -25° C/1 year(Do not lower than -25° C)
Synonyms	Monocyte differentiation antigen CD14 ; Myeloid cell-specific leucine-rich glycoprotein ; CD antigen CD14 ; [Cleaved into: Monocyte differentiation antigen CD14, urinary form ; Monocyte differentiation antigen CD14, membrane-bound form]
Observed Band	50kD
Calculated Molecular Weight	40kD
Cell Pathway	Membrane
Tissue Specificity	Detected on macrophages (at protein level) (PubMed:1698311). Expressed strongly on the surface of monocytes and weakly on the surface of granulocytes; also expressed by most tissue macrophages.
Function	Cooperates with MD-2 and TLR4 to mediate the innate immune response to bacterial lipopolysaccharide (LPS). Acts via MyD88, TIRAP and TRAF6, leading to NF-kappa-B activation, cytokine secretion and the inflammatory response. Up-regulates cell surface molecules, including adhesion molecules.,online information:CD14 entry,similarity:Contains 11 LRR (leucine-rich) repeats.,subunit:Belongs to the lipopolysaccharide (LPS) receptor, a multi-protein complex containing at least CD14, MD-2 and TLR4.,tissue specificity:Expressed strongly on the surface of monocytes and weakly on the surface of granulocytes;





also expressed by most tissue macrophages.,

Background

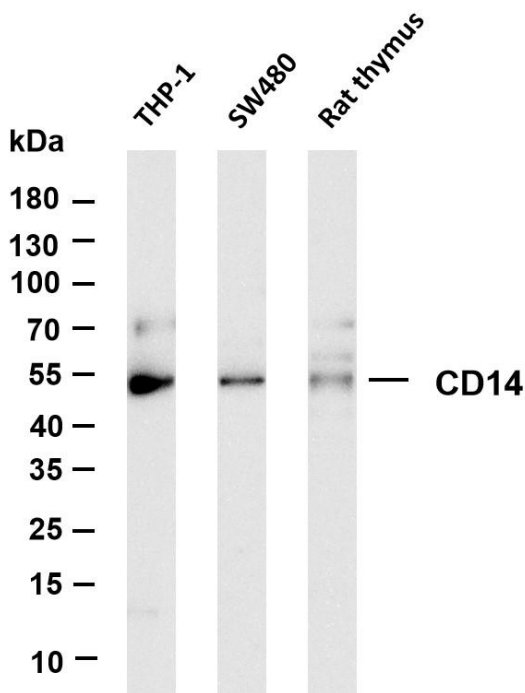
The protein encoded by this gene is a surface antigen that is preferentially expressed on monocytes/macrophages. It cooperates with other proteins to mediate the innate immune response to bacterial lipopolysaccharide. Alternative splicing results in multiple transcript variants encoding the same protein. [provided by RefSeq, Mar 2010],

matters needing attention

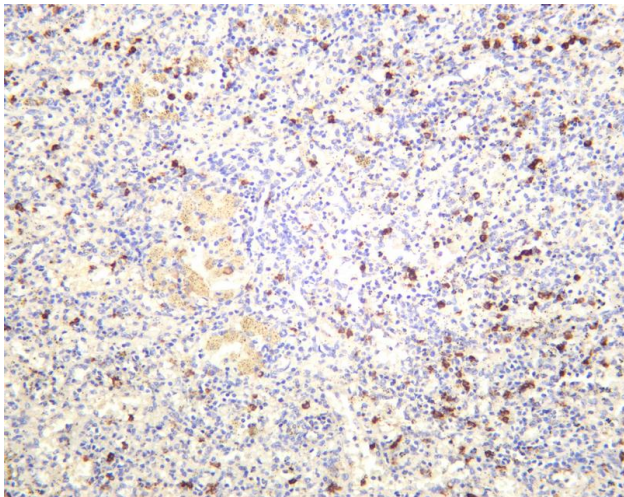
Avoid repeated freezing and thawing!

Usage suggestions

This product can be used in immunological reaction related experiments. For more information, please consult technical personnel.



Various whole cell lysates were separated by 4-20% SDS-PAGE, and the membrane was blotted with anti-CD14 antibody. The HRP-conjugated Goat anti-Rabbit IgG(H + L) antibody was used to detect the antibody. Lane 1: THP-1 Lane 2: SW480 Lane 3: Rat thymus Predicted band size: 40kDa Observed band size: 50kDa



Human spleen was stained with anti-CD14 rabbit antibody

杭州臻优品生物科技有限公司

热销产品:

蛋白、一抗、抗体对、ELISA试剂盒、生化试剂盒
CCK8试剂盒、QPCR检测试剂盒

检测服务:

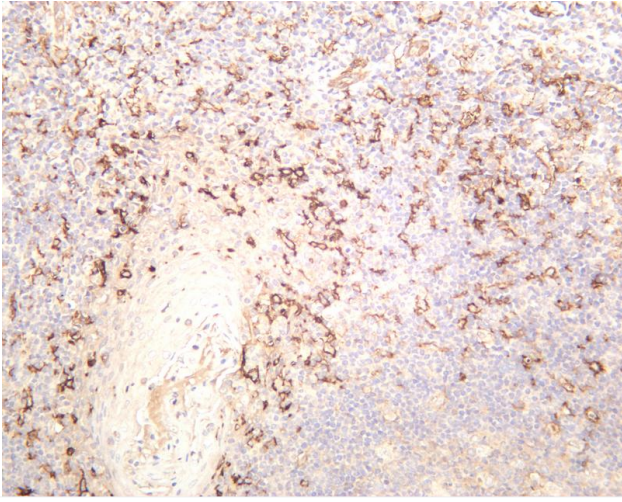
ELISA检测及定制服务 | 生化检测 | PCR、QPCR检测 | WB检测
ICO-IP检测 | 切片 | 染色 | 免疫组化 | 免疫荧光 | 透射电镜全套
| 宏基因组、转录组、基因组、蛋白组、代谢组测序



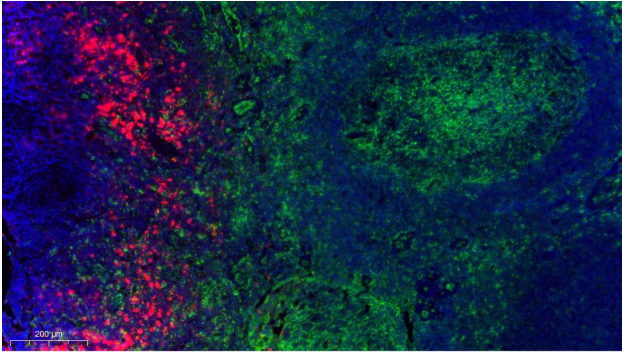
关注官网



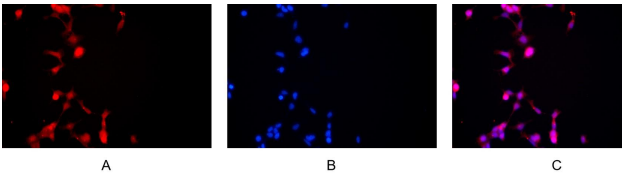
关注客服



Human tonsil was stained with anti-CD14 rabbit antibody



Fluorescence multiplex immunohistochemical analysis of human tonsil tissue. CD38 rabbit mAb (RED) and CD14 rabbit mAb (GREEN) was tested with different TSA Fluorescence reagent. Microscopy and pseudocoloring of individual dyes was performed using a Slideviewer Imaging System (Excilone).



Immunofluorescence analysis of HEK293. Picture A: CD14 antibody (red). Picture B: DAPI (blue). Picture C: Merge of A+B

