



CDK4 Rabbit mAb

Catalog No	YP-rAb-17911
Isotype	IgG
Reactivity	Human,Mouse,Rat
Applications	WB,IHC,IF,IP,ELISA
Gene Name	CDK4
Protein Name	Cyclin-dependent kinase 4
Purification Process	Protein A
Specificity	Endogenous
Formulation	PBS, 50% glycerol, 0.05% Proclin 300, 0.05%BSA
Source	Monoclonal, Rabbit,IgG
Dilution	WB 1:1000-1:5000; IF 1:200-1:1000; ELISA 1:5000-1:20000; IP 1:50-1:200;
Concentration	0.5 mg/ml
Purity	≥90%
Storage Stability	-15° C to -25° C/1 year(Do not lower than -25° C)
Synonyms	CDK4 ; Cyclin-dependent kinase 4 ; Cell division protein kinase 4 ; PSK-J3
Observed Band	34kD
Calculated Molecular Weight	34kD
Cell Pathway	Cytoplasm, Nucleus
Tissue Specificity	Brain,Muscle,
Function	Catalytic activity:ATP + a protein = ADP + a phosphoprotein.,Disease:CDK4 mutations are involved in tumor formation.,Disease:Defects in CDK4 are the cause of cutaneous malignant melanoma 3 (CMM3) [MIM:609048, 155600]. Malignant melanoma is a malignant neoplasm of melanocytes, arising de novo or from a preexisting benign nevus, which occurs most often in the skin but also may involve other sites.,enzyme regulation:Phosphorylation at Thr-172 is necessary for enzymatic activity.,Function:Probably involved in the control of the cell cycle.,similarity:Belongs to the protein kinase superfamily. CMGC Ser/Thr protein kinase family. CDC2/CDKX subfamily.,similarity:Contains 1 protein kinase domain.,subunit:Forms a stable complex with D-type G1 cyclins. Interacts with SEI1 and ZNF655/VIK.,
Background	cyclin dependent kinase 4(CDK4) Homo sapiens The protein encoded by this gene is a member of the Ser/Thr protein kinase family. This protein is highly

杭州臻优品生物科技有限公司

热销产品:

蛋白、一抗、抗体对、ELISA试剂盒、生化试剂盒
CCK8试剂盒、QPCR检测试剂盒

检测服务:

ELISA检测及定制服务 | 生化检测 | PCR、QPCR检测 | WB检测
| CO-IP检测 | 切片 | 染色 | 免疫组化 | 免疫荧光 | 透射电镜全套
| 宏基因组、转录组、基因组、蛋白组、代谢组测序



关注官网



关注客服



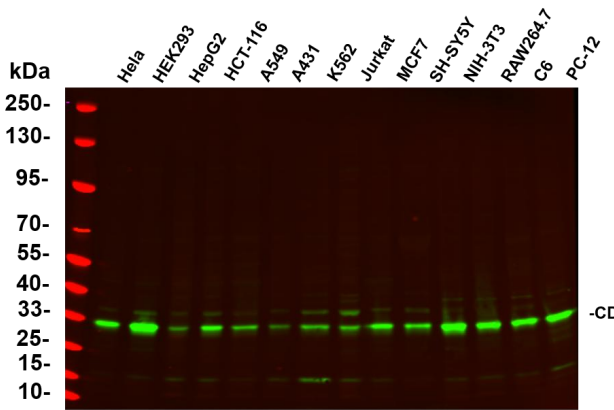
similar to the gene products of *S. cerevisiae* cdc28 and *S. pombe* cdc2. It is a catalytic subunit of the protein kinase complex that is important for cell cycle G1 phase progression. The activity of this kinase is restricted to the G1-S phase, which is controlled by the regulatory subunits D-type cyclins and CDK inhibitor p16(INK4a). This kinase was shown to be responsible for the phosphorylation of retinoblastoma gene product (Rb). Mutations in this gene as well as in its related proteins including D-type cyclins, p16(INK4a) and Rb were all found to be associated with tumorigenesis of a variety of cancers. Multiple polyadenylation sites of this gene have been reported. [provided by RefSeq, Jul 2008],

matters needing attention

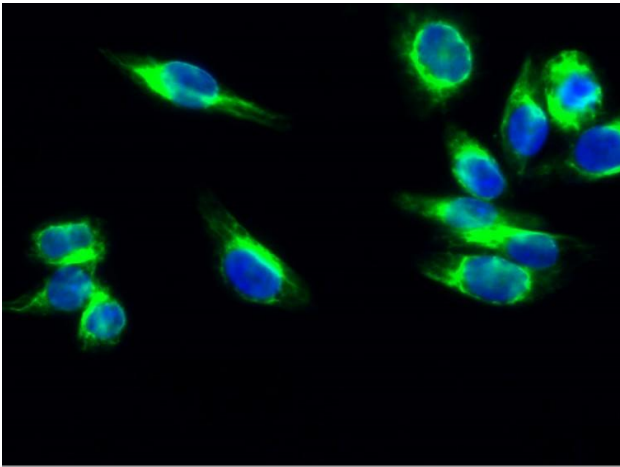
Avoid repeated freezing and thawing!

Usage suggestions

This product can be used in immunological reaction related experiments. For more information, please consult technical personnel.

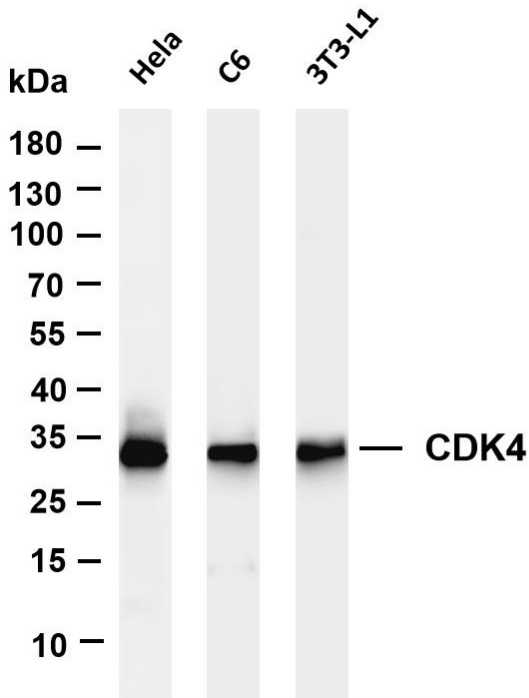


Various whole cell lysates were separated by 4-20% SDS-PAGE, and the primary antibody was used at 4°C, over night with a 1:5000 dilution. The Dylight 800-conjugated Goat anti-Rabbit antibody

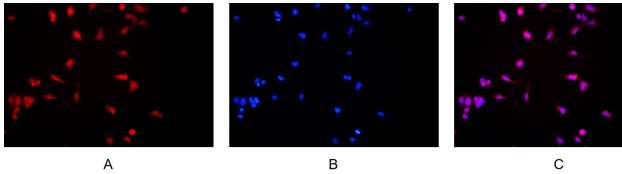


Immunofluorescence analysis of HeLa cell. 1, Cdk4 Antibody(green) was diluted at 1:200(4° overnight). 2, Goat Anti Rabbit Alexa Fluor 488 Catalog:





Various whole cell lysates were separated by 4-20% SDS-PAGE, and the membrane was blotted with anti-CDK4 antibody. The HRP-conjugated Goat anti-Rabbit IgG(H + L) antibody was used to detect the antibody. Lane 1: HeLa Lane 2: C6 Lane 3: 3T3-L1
Predicted band size: 34kDa Observed band size: 34kDa



Immunofluorescence analysis of HEK293. Picture A: CDK4 antibody (red). Picture B: DAPI (blue). Picture C: Merge of A+B

