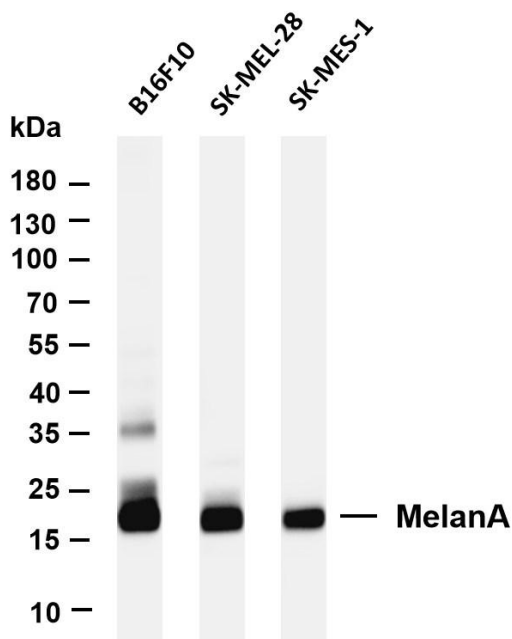




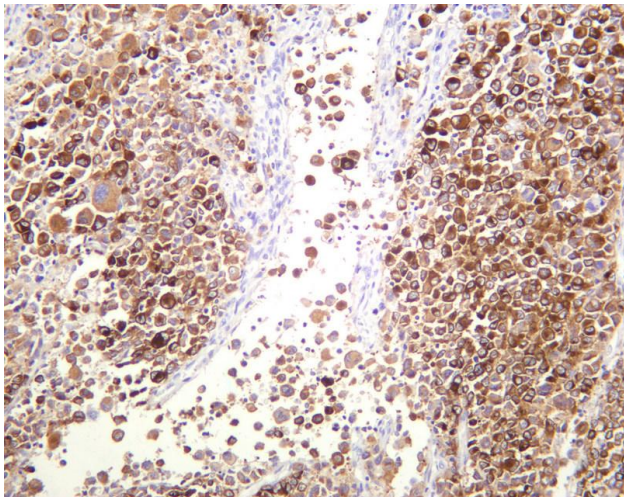
# Melan-A Rabbit mAb

<b>Catalog No</b>	YP-rAb-17890
<b>Isotype</b>	IgG
<b>Reactivity</b>	Human,Mouse
<b>Applications</b>	WB,IHC,IF,ELISA
<b>Gene Name</b>	MLANA MART1
<b>Protein Name</b>	Mart-1/Melan-A
<b>Purification Process</b>	Protein A
<b>Specificity</b>	Endogenous
<b>Formulation</b>	PBS, 50% glycerol, 0.05% Proclin 300, 0.05%BSA
<b>Source</b>	Monoclonal, Rabbit,IgG
<b>Dilution</b>	IHC 1:400-1:1000; WB 1:1000-1:5000; IF 1:200-1:1000; ELISA 1:5000-1:20000; Note: For IHC, we suggest antigen retrieval with TE buffer pH 9.0
<b>Concentration</b>	0.5 mg/ml
<b>Purity</b>	≥90%
<b>Storage Stability</b>	-15° C to -25° C/1 year(Do not lower than -25° C)
<b>Synonyms</b>	Melanoma antigen recognized by T-cells 1 ; MART-1 ; Antigen LB39-AA ; Antigen SK29-AA ; Protein Melan-A ;
<b>Observed Band</b>	18kD
<b>Calculated Molecular Weight</b>	13kD
<b>Cell Pathway</b>	Endoplasmic reticulum membrane
<b>Tissue Specificity</b>	Expression is restricted to melanoma and melanocyte cell lines and retina.
<b>Function</b>	tissue specificity:Expression is restricted to melanoma and melanocyte cell lines and retina.,
<b>Background</b>	tissue specificity:Expression is restricted to melanoma and melanocyte cell lines and retina.,
<b>matters needing attention</b>	Avoid repeated freezing and thawing!
<b>Usage suggestions</b>	This product can be used in immunological reaction related experiments. For more information, please consult technical personnel.





Various whole cell lysates were separated by 4-20% SDS-PAGE, and the membrane was blotted with anti-MelanA antibody. The HRP-conjugated Goat anti-Rabbit IgG(H + L) antibody was used to detect the antibody. Lane 1: B16F10 Lane 2: SK-MEL-28 Lane 3: SK-MES-1 Predicted band size: 13kDa Observed band size: 18kDa



Human melanoma was stained with anti-MelanA rabbit antibody

