



Ferritin Heavy Chain Rabbit mAb

Catalog No	YP-rAb-17888
Isotype	IgG
Reactivity	Human,Mouse,Rat,Zebrafish
Applications	WB,IHC,IF,ELISA
Gene Name	FTH1
Protein Name	Ferritin heavy chain
Purification Process	Protein A
Specificity	Endogenous
Formulation	PBS, 50% glycerol, 0.05% Proclin 300, 0.05%BSA
Source	Monoclonal, Rabbit,IgG
Dilution	IHC 1:2000-1:10000; WB 1:1000-1:5000; IF 1:200-1:1000; ELISA 1:5000-1:20000; Note: For IHC, we suggest antigen retrieval with TE buffer pH 9.0
Concentration	0.5 mg/ml
Purity	≥90%
Storage Stability	-15° C to -25° C/1 year(Do not lower than -25° C)
Synonyms	FTH1 ; FTH ; FTHL6 ; OK/SW-cl.84 ; PIG15 ; Ferritin heavy chain ; Ferritin H subunit ; Cell proliferation-inducing gene 15 protein
Observed Band	21kD
Calculated Molecular Weight	21kD
Cell Pathway	Cytoplasm
Tissue Specificity	Expressed in the liver.
Function	Catalytic activity:4 Fe(2+) + 4 H(+) + O(2) = 4 Fe(3+) + 2 H(2)O.,Function:Stores iron in a soluble, non-toxic, readily available form. Important for iron homeostasis.,Function:Stores iron in a soluble, non-toxic, readily available form. Important for iron homeostasis. Has ferroxidase activity. Iron is taken up in the ferrous form and deposited as ferric hydroxides after oxidation. Also plays a role in delivery of iron to cells. Mediates iron uptake in capsule cells of the developing kidney.,miscellaneous:In human liver the heavy chain is the major chain.,online information:Ferritin entry,similarity:Belongs to the ferritin family.,similarity:Contains 1 ferritin-like diiron domain.,subunit:Oligomer of 24 subunits. There are two types of subunits: L (light) chain and H (heavy) chain. The major chain can be light or heavy, depending on the species and tissue type. The





functional molecule forms a roughly spherical shell with a diameter of 12 nm and contains a central cavity into which the insoluble mineral iron core is deposited.,

Background

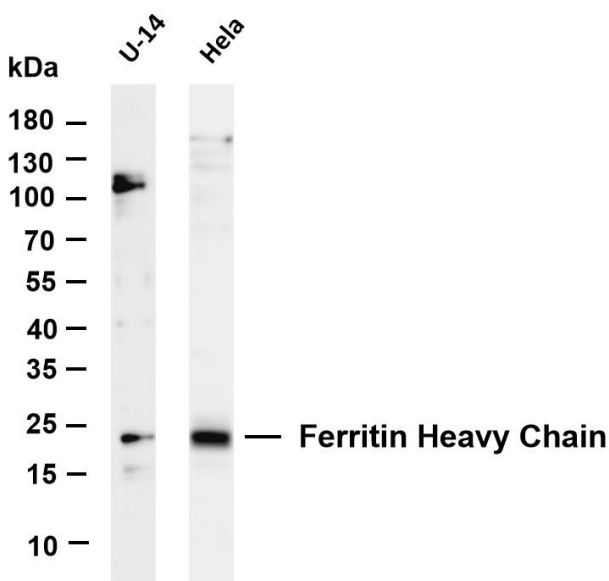
This gene encodes the heavy subunit of ferritin, the major intracellular iron storage protein in prokaryotes and eukaryotes. It is composed of 24 subunits of the heavy and light ferritin chains. Variation in ferritin subunit composition may affect the rates of iron uptake and release in different tissues. A major function of ferritin is the storage of iron in a soluble and nontoxic state. Defects in ferritin proteins are associated with several neurodegenerative diseases. This gene has multiple pseudogenes. Several alternatively spliced transcript variants have been observed, but their biological validity has not been determined. [provided by RefSeq, Jul 2008],

matters needing attention

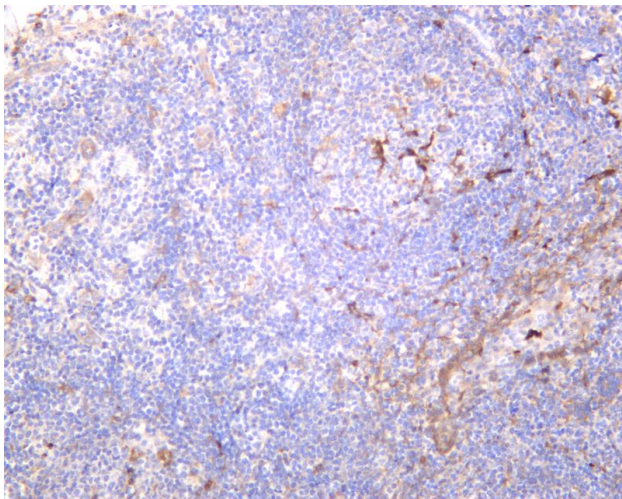
Avoid repeated freezing and thawing!

Usage suggestions

This product can be used in immunological reaction related experiments. For more information, please consult technical personnel.



Various whole cell lysates were separated by 4-20% SDS-PAGE, and the membrane was blotted with anti-Ferritin Heavy Chain antibody. The HRP-conjugated Goat anti-Rabbit IgG(H + L) antibody was used to detect the antibody. Lane 1: U-14 Lane 2: HeLa Predicted band size: 21kDa Observed band size: 21kDa



Human tonsil was stained with anti-Ferritin Heavy Chain rabbit antibody

杭州臻优品生物科技有限公司

热销产品:

蛋白、一抗、抗体对、ELISA试剂盒、生化试剂盒
CCK8试剂盒、QPCR检测试剂盒

检测服务:

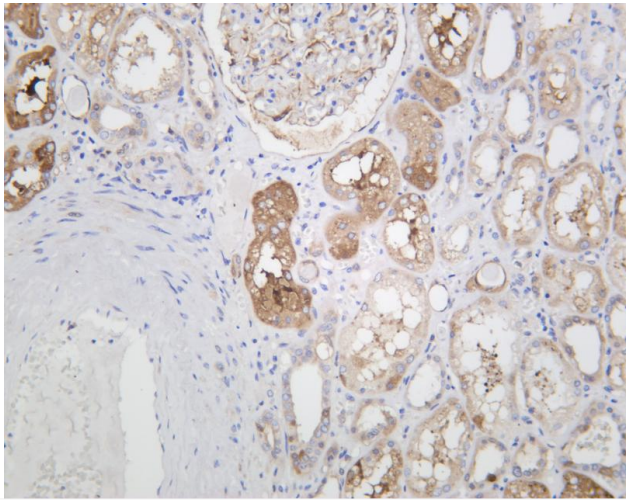
ELISA检测及定制服务 | 生化检测 | PCR、QPCR检测 | WB检测
ICO-IP检测 | 切片 | 染色 | 免疫组化 | 免疫荧光 | 透射电镜全套
| 宏基因组、转录组、基因组、蛋白组、代谢组测序



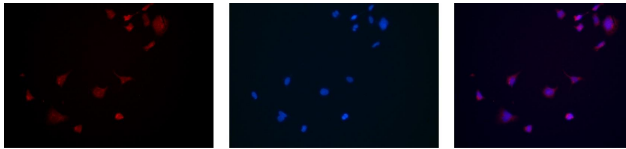
关注官网



关注客服



Human kidney was stained with anti-Ferritin Heavy Chain rabbit antibody



Immunofluorescence analysis of HEK293. Picture A: Ferritin Heavy Chain antibody (red). Picture B: DAPI (blue). Picture C: Merge of A+B

A

B

C

