



# Aurora B Rabbit mAb

<b>Catalog No</b>	YP-rAb-17874
<b>Isotype</b>	IgG
<b>Reactivity</b>	Human
<b>Applications</b>	WB,IHC,IF,IP,ELISA
<b>Gene Name</b>	AURKB
<b>Protein Name</b>	Aurora kinase B,Aurora B
<b>Purification Process</b>	Protein A
<b>Specificity</b>	Endogenous
<b>Formulation</b>	PBS, 50% glycerol, 0.05% Proclin 300, 0.05%BSA
<b>Source</b>	Monoclonal, Rabbit,IgG
<b>Dilution</b>	IHC 1:500-1:1000; WB 1:1000-1:5000; IF 1:200-1:1000; ELISA 1:5000-1:20000; IP 1:50-1:200; Note: For IHC, we suggest antigen retrieval with TE buffer pH 9.0
<b>Concentration</b>	0.5 mg/ml
<b>Purity</b>	≥90%
<b>Storage Stability</b>	-15° C to -25° C/1 year(Do not lower than -25° C)
<b>Synonyms</b>	AURKB ; AIK2 ; AIM1 ; AIRK2 ; ARK2 ; STK1 ; STK12 ; STK5 ; Aurora kinase B ; Aurora 1 ; Aurora- and IPL1-like midbody-associated protein 1 ; AIM-1 ; Aurora/IPL1-related kinase 2 ; ARK-2 ; Aurora-related kinase 2 ; STK-1 ; Serine/threonine-protein kinase 12
<b>Observed Band</b>	39kD
<b>Calculated Molecular Weight</b>	39kD
<b>Cell Pathway</b>	Nucleus
<b>Tissue Specificity</b>	High level expression seen in the thymus. It is also expressed in the spleen, lung, testis, colon, placenta and fetal liver. Expressed during S and G2/M phase and expression is up-regulated in cancer cells during M phase. ; [Isoform 3]: Not expressed in normal liver, high expression in metastatic liver.
<b>Function</b>	Catalytic activity:ATP + a protein = ADP + a phosphoprotein.,cofactor:Magnesium.,Disease:Disruptive regulation of expression is a possible mechanism of the perturbation of chromosomal integrity in cancer cells through its dominant-negative effect on cytokinesis.,Function:May be directly involved in regulating the cleavage of polar spindle microtubules and is a key regulator for the onset of cytokinesis during mitosis. Component of the chromosomal passenger complex (CPC), a complex that acts as a key regulator





of mitosis. The CPC complex has essential functions at the centromere in ensuring correct chromosome alignment and segregation and is required for chromatin-induced microtubule stabilization and spindle assembly. Phosphorylates 'Ser-10' and 'Ser-28' of histone H3 during mitosis.,similarity:Belongs to the protein kinase superfamily. Ser/Thr protein kinase family. Aurora subfamily.,similarity:Contains 1 protein kinase domain.,subcellular location:Localizes on chromosome arms and inner centromeres from prophase through metaphase and then transferring to the spindle midzone and midbody from anaphase through cytokinesis. Colocalized with gamma tubulin in the mid-body.,subunit:Interacts with TACC1. Associates with RACGAP1 during M phase. Component of the CPC at least composed of BIRC5/survivin CDCA8/borealin, INCENP and AURKB/Aurora-B. Interacts with CDCA1 and NDC80. Interacts with EVI5.,tissue specificity:High level expression seen in the thymus. It is also expressed in the spleen, lung, testis, colon, placenta and fetal liver. Expressed during S and G2/M phase and expression is up-regulated in cancer cells during M phase.,

## Background

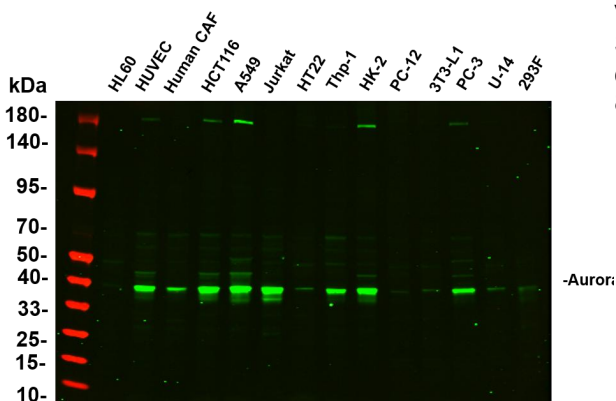
This gene encodes a member of the aurora kinase subfamily of serine/threonine kinases. The genes encoding the other two members of this subfamily are located on chromosomes 19 and 20. These kinases participate in the regulation of alignment and segregation of chromosomes during mitosis and meiosis through association with microtubules. A pseudogene of this gene is located on chromosome 8. Alternatively spliced transcript variants have been found for this gene. [provided by RefSeq, Sep 2015],

## matters needing attention

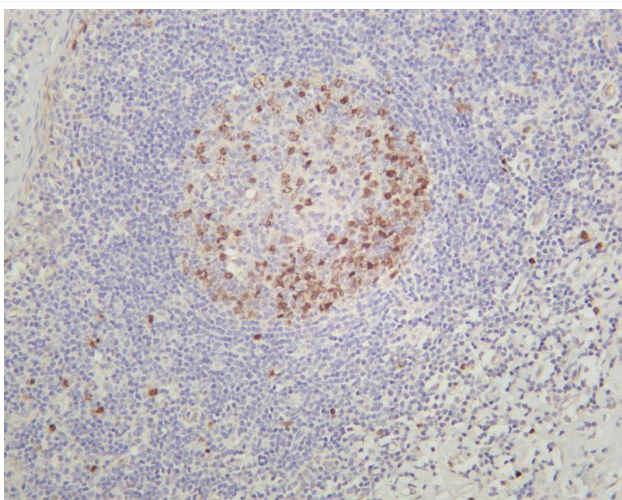
Avoid repeated freezing and thawing!

## Usage suggestions

This product can be used in immunological reaction related experiments. For more information, please consult technical personnel.



Various whole cell lysates were separated by 4-20% SDS-PAGE, and the primary antibody was used at 4°C, over night with a 1:2500 dilution. The Dylight 800-conjugated Goat anti-Rabbit antibody



Human tonsil was stained with anti-Aurora B rabbit antibody

## 杭州臻优品生物科技有限公司

### 热销产品:

蛋白、一抗、抗体对、ELISA试剂盒、生化试剂盒  
CCK8试剂盒、QPCR检测试剂盒

### 检测服务:

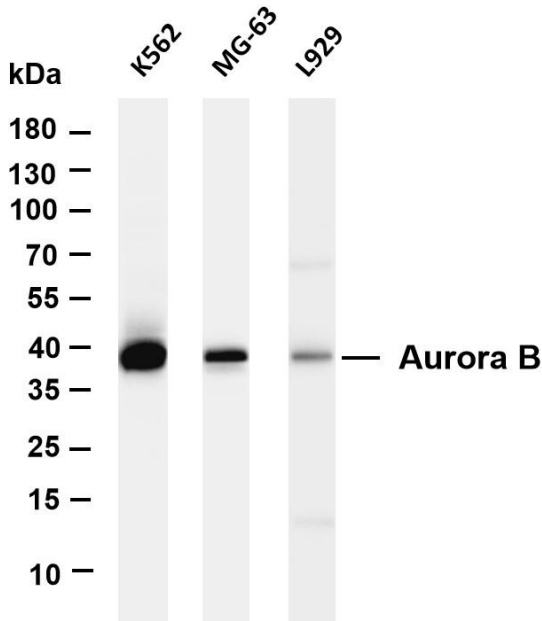
ELISA检测及定制服务 | 生化检测 | PCR、QPCR检测 | WB检测  
ICO-IP检测 | 切片 | 染色 | 免疫组化 | 免疫荧光 | 透射电镜全套  
| 宏基因组、转录组、基因组、蛋白组、代谢组测序



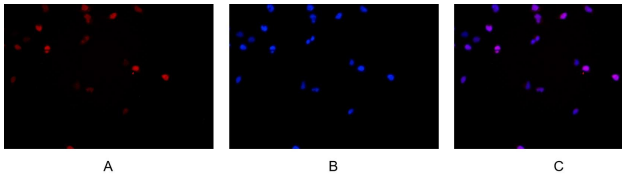
关注官网



关注客服



Various whole cell lysates were separated by 4-20% SDS-PAGE, and the membrane was blotted with anti-Aurora B antibody. The HRP-conjugated Goat anti-Rabbit IgG(H + L) antibody was used to detect the antibody. Lane 1: K562 Lane 2: MG-63 Lane 3: L929  
Predicted band size: 39kDa Observed band size: 39kDa



Immunofluorescence analysis of HEK293. Picture A: Aurora B antibody (red). Picture B: DAPI (blue). Picture C: Merge of A+B

