



LYVE1 Rabbit mAb

Catalog No	YP-rAb-17869
Isotype	IgG
Reactivity	Human,Mouse,Rat
Applications	WB,IHC,IF,ELISA
Gene Name	LYVE1 CRSBP1 HAR XLKD1 UNQ230/PRO263
Protein Name	Lymphatic vessel endothelial hyaluronic acid receptor 1 (LYVE-1) (Cell surface retention sequence-binding protein 1) (CRSBP-1) (Extracellular link domain-containing protein 1) (Hyaluronic acid receptor)
Purification Process	Protein A
Specificity	Endogenous
Formulation	PBS, 50% glycerol, 0.05% Proclin 300, 0.05%BSA
Source	Monoclonal, Rabbit,IgG
Dilution	IHC 1:200-1:1000; WB 1:2000-1:10000; IF 1:200-1:1000; ELISA 1:5000-1:20000; Note: For IHC, we suggest antigen retrieval with TE buffer pH 9.0
Concentration	0.5 mg/ml
Purity	≥90%
Storage Stability	-15° C to -25° C/1 year(Do not lower than -25° C)
Synonyms	
Observed Band	35kD
Calculated Molecular Weight	35kD
Cell Pathway	Membrane
Tissue Specificity	Mainly expressed in endothelial cells lining lymphatic vessels.
Function	Ligand-specific transporter trafficking between intracellular organelles (TGN) and the plasma membrane. Plays a role in autocrine regulation of cell growth mediated by growth regulators containing cell surface retention sequence binding (CRS). May act as an hyaluronan (HA) transporter, either mediating its uptake for catabolism within lymphatic endothelial cells themselves, or its transport into the lumen of afferent lymphatic vessels for subsequent re-uptake and degradation in lymph nodes.,PTM:O-glycosylated.,similarity:Contains 1 Link domain.,subcellular location:Localized to the plasma membrane and in vesicles near extranuclear membranes which may represent trans-Golgi network (TGN) and endosomes/prelysosomal compartments. Undergoes ligand-dependent internalization and recycling at the cell surface.,subunit:Homodimer; disulfide-linked. Interacts with PDGFB and IGFBP3. Forms a transient ternary

杭州臻优品生物科技有限公司

热销产品:

蛋白、一抗、抗体对、ELISA试剂盒、生化试剂盒
CCK8试剂盒、QPCR检测试剂盒

检测服务:

ELISA检测及定制服务 | 生化检测 | PCR、QPCR检测 | WB检测
ICO-IP检测 | 切片 | 染色 | 免疫组化 | 免疫荧光 | 透射电镜全套
| 宏基因组、转录组、基因组、蛋白组、代谢组测序



关注官网



关注客服



complex with PDGFB and PDGFRB in TGN.,tissue specificity:Mainly expressed in endothelial cells lining lymphatic vessels.,

Background

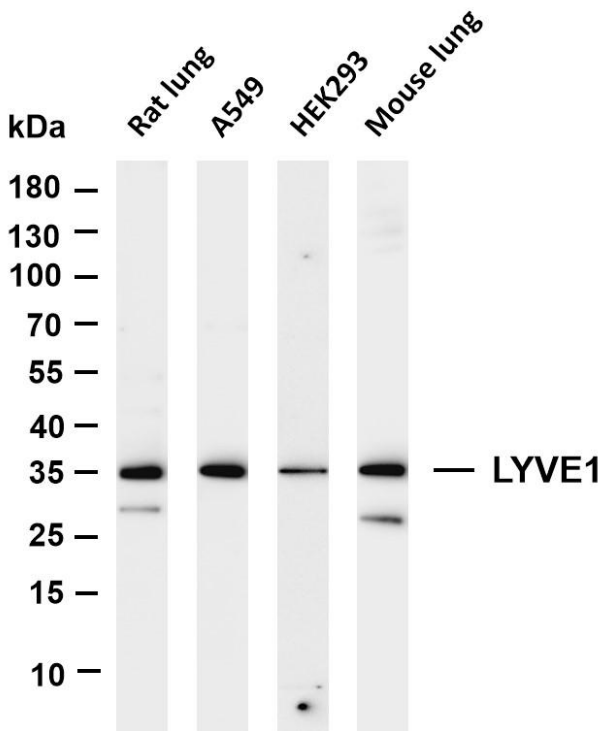
This gene encodes a type I integral membrane glycoprotein.The encoded protein acts as a receptor and binds to both soluble and immobilized hyaluronan. This protein may function in lymphatic hyaluronan transport and have a role in tumor metastasis. [provided by RefSeq, Jul 2008],

matters needing attention

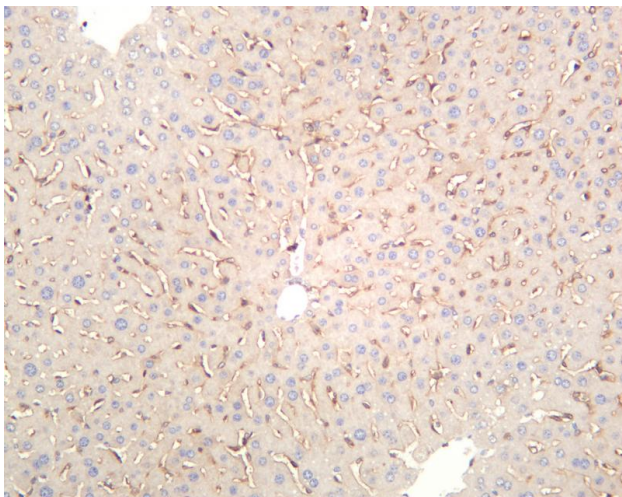
Avoid repeated freezing and thawing!

Usage suggestions

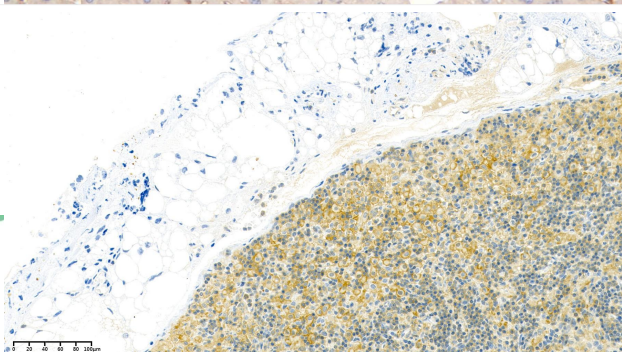
This product can be used in immunological reaction related experiments. For more information, please consult technical personnel.



Various whole cell lysates were separated by 4-20% SDS-PAGE, and the membrane was blotted with anti-LYVE1 antibody. The HRP-conjugated Goat anti-Rabbit IgG(H + L) antibody was used to detect the antibody. Lane 1: Rat lung Lane 2: A549 Lane 3: HEK293 Lane 4: Mouse lung Predicted band size: 35kDa Observed band size: 35kDa



Mouse liver was stained with anti-LYVE1 rabbit antibody



Mouse intestinal lymph nodes was stained with anti-LYVE1 Rabbit antibody

测 | PCR、QPCR检测 | WB检测

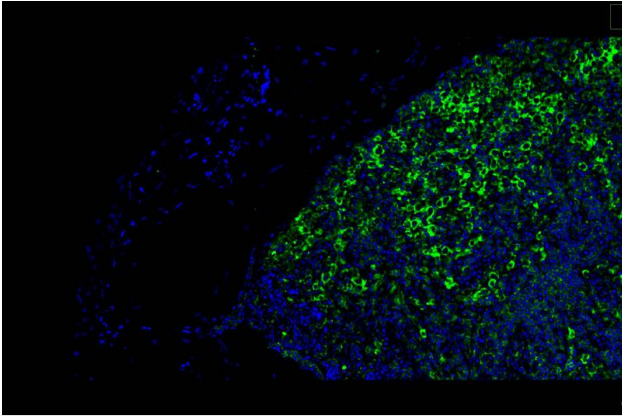
宏基因组、转录组、基因组、蛋白组、代谢组测序



关注官网



关注客服



Mouse intestinal lymph nodes was stained with anti-LYVE1 Rabbit antibody

杭州臻优品生物科技有限公司

热销产品:

蛋白、一抗、抗体对、ELISA试剂盒、生化试剂盒
CCK8试剂盒、QPCR检测试剂盒

检测服务:

ELISA检测及定制服务 | 生化检测 | PCR、QPCR检测 | WB检测
ICO-IP检测 | 切片 | 染色 | 免疫组化 | 免疫荧光 | 透射电镜全套
| 宏基因组、转录组、基因组、蛋白组、代谢组测序



关注官网



关注客服