



Osteopontin Rabbit mAb

Catalog No	YP-rAb-17866
Isotype	IgG
Reactivity	Human,Mouse,Rat
Applications	WB,IHC,IF,IP,ELISA
Gene Name	SPP1
Protein Name	Osteopontin
Purification Process	Protein A
Specificity	Endogenous
Formulation	PBS, 50% glycerol, 0.05% Proclin 300, 0.05%BSA
Source	Monoclonal, Rabbit,IgG
Dilution	IHC 1:200-1:1000; WB 1:2000-1:10000; IF 1:200-1:1000; ELISA 1:5000-1:20000; IP 1:50-1:200; Note: For IHC, we suggest antigen retrieval with TE buffer pH 9.0
Concentration	0.5 mg/ml
Purity	≥90%
Storage Stability	-15° C to -25° C/1 year(Do not lower than -25° C)
Synonyms	SPP1 ; BNSP ; OPN ; PSEC0156 ; Osteopontin ; Bone sialoprotein 1 ; Nephropontin ; Secreted phosphoprotein 1 ; SPP-1 ; Urinary stone protein ; Uropontin
Observed Band	55,65kD
Calculated Molecular Weight	35kD
Cell Pathway	Secreted
Tissue Specificity	Bone. Found in plasma.
Function	Disease:This protein plays a principal role in urinary stone formation as the stone matrix.,Function:Acts as a cytokine involved in enhancing production of interferon-gamma and interleukin-12 and reducing production of interleukin-10 and is essential in the pathway that leads to type I immunity.,Function:Binds tightly to hydroxyapatite. Appears to form an integral part of the mineralized matrix. Probably important to cell-matrix interaction.,online information:Osteopontin entry,PTM:Extensively phosphorylated on clustered serine residues.,PTM:N- and O-glycosylated.,similarity:Belongs to the osteopontin family.,subunit:Ligand for integrin alpha-V/beta-3.,





Background

secreted phosphoprotein 1(SPP1) Homo sapiens The protein encoded by this gene is involved inThe attachment of osteoclasts toThe mineralized bone matrix.The encoded protein is secreted and binds hydroxyapatite with high affinity.The osteoclast vitronectin receptor is found inThe cell membrane and may be involved inThe binding to this protein. This protein is also a cytokine that upregulates expression of interferon-gamma and interleukin-12. Several transcript variants encoding different isoforms have been found for this gene. [provided by RefSeq, Oct 2011],

matters needing attention

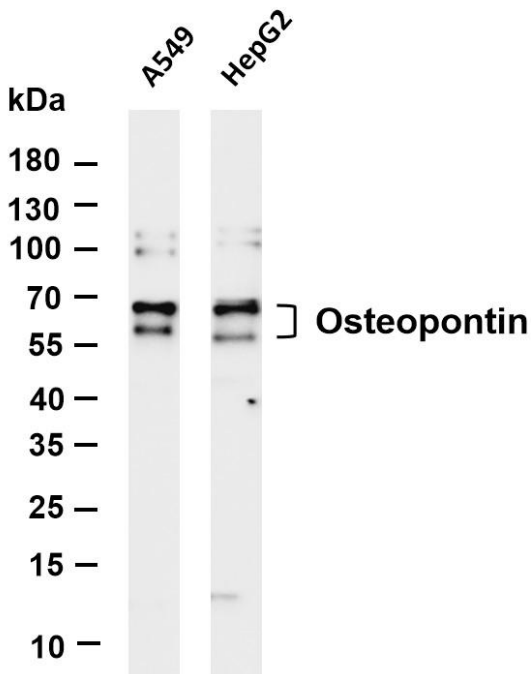
Avoid repeated freezing and thawing!

Usage suggestions

This product can be used in immunological reaction related experiments. For more information, please consult technical personnel.



Human liver was stained with anti-Osteopontin rabbit antibody



Various whole cell lysates were separated by 4-20% SDS-PAGE, and the membrane was blotted with anti-Osteopontin antibody. The HRP-conjugated Goat anti-Rabbit IgG(H + L) antibody was used to detect the antibody. Lane 1: A549 Lane 2: HepG2 Predicted band size: 35kDa Observed band size: 60kDa

