



MYL2 Rabbit mAb

Catalog No	YP-rAb-17864
Isotype	IgG
Reactivity	Human,Mouse,Rat
Applications	WB,IHC,IF,ELISA
Gene Name	MYL2
Protein Name	Myosin regulatory light chain 2 ventricular/cardiac muscle isoform
Purification Process	Protein A
Specificity	Endogenous
Formulation	PBS, 50% glycerol, 0.05% Proclin 300, 0.05%BSA
Source	Monoclonal, Rabbit,IgG
Dilution	IHC 1:200-1:1000; WB 1:2000-1:10000; IF 1:200-1:1000; ELISA 1:5000-1:20000; Note: For IHC, we suggest antigen retrieval with TE buffer pH 9.0
Concentration	0.5 mg/ml
Purity	≥90%
Storage Stability	-15° C to -25° C/1 year(Do not lower than -25° C)
Synonyms	MYL2 ; Myosin regulatory light chain 2 ; ventricular/cardiac muscle isoform ; MLC-2 ; MLC-2v
Observed Band	18kD
Calculated Molecular Weight	18kD
Cell Pathway	Cytoplasm
Tissue Specificity	Highly expressed in type I muscle fibers.
Function	Disease:Defects in MYL2 are the cause of cardiomyopathy familial hypertrophic type 10 (CMH10) [MIM:608758]. Familial hypertrophic cardiomyopathy is a hereditary heart disorder characterized by ventricular hypertrophy, which is usually asymmetric and often involves the interventricular septum. The symptoms include dyspnea, syncope, collapse, palpitations, and chest pain. They can be readily provoked by exercise. The disorder has inter- and intrafamilial variability ranging from benign to malignant forms with high risk of cardiac failure and sudden cardiac death.,Disease:Defects in MYL2 are the cause of cardiomyopathy hypertrophic with mid-left ventricular chamber type 2 (MVC2) [MIM:608758]. MVC2 is a very rare variant of familial hypertrophic cardiomyopathy, characterized by mid-left ventricular chamber thickening.,miscellaneous:This chain binds calcium.,similarity:Contains 3 EF-hand domains.,subunit:Myosin is an hexamer of





2 heavy chains and 4 light chains.,

Background

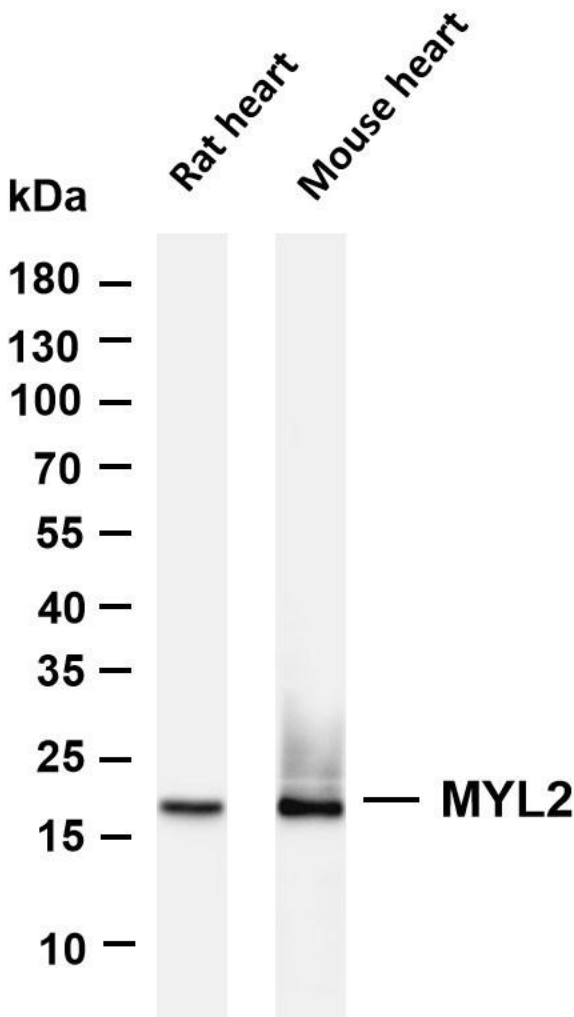
This gene encodes The regulatory light chain associated with cardiac myosin beta (or slow) heavy chain. Ca⁺ triggers The phosphorylation of regulatory light chain that in turn triggers contraction. Mutations in this gene are associated with mid-left ventricular chamber type hypertrophic cardiomyopathy. [provided by RefSeq, Jul 2008],

matters needing attention

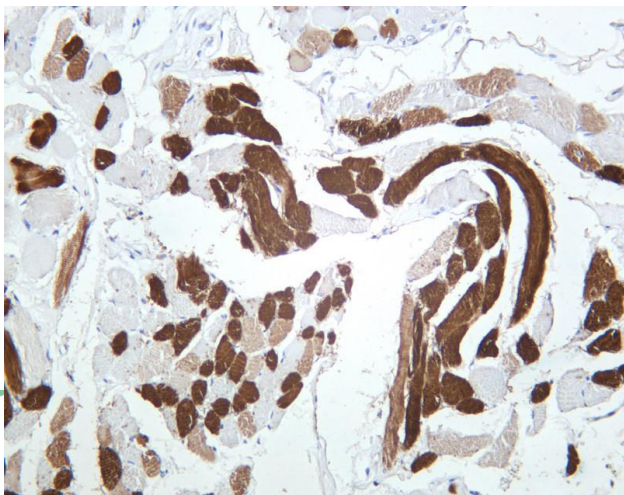
Avoid repeated freezing and thawing!

Usage suggestions

This product can be used in immunological reaction related experiments. For more information, please consult technical personnel.



Various whole cell lysates were separated by 4-20% SDS-PAGE, and the membrane was blotted with anti-MYL2 antibody. The HRP-conjugated Goat anti-Rabbit IgG(H + L) antibody was used to detect the antibody. Lane 1: Rat heart Lane 2: Mouse heart
Predicted band size: 18kDa Observed band size: 18kDa



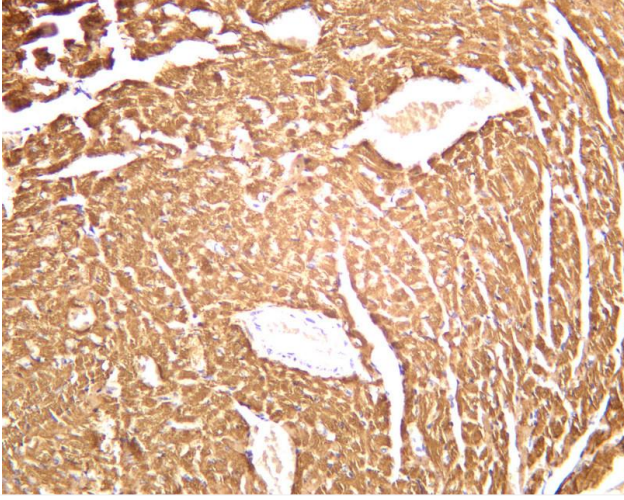
Human skeletal muscle was stained with anti-MYL2 rabbit antibody



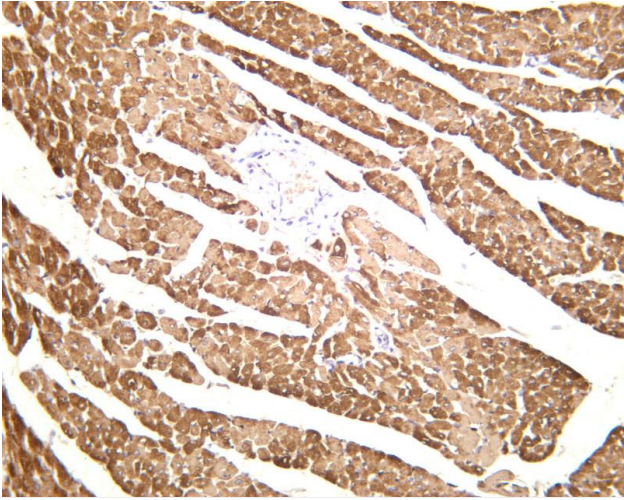
关注官网



关注客服



Mouse cardiac muscle was stained with anti-MYL2 rabbit antibody



Rat cardiac muscle was stained with anti-MYL2 rabbit antibody

