



# GM130 Rabbit mAb

<b>Catalog No</b>	YP-rAb-17860
<b>Isotype</b>	IgG
<b>Reactivity</b>	Human,Mouse,Rat
<b>Applications</b>	WB,IHC,IF,IP,ELISA
<b>Gene Name</b>	GOLGA2
<b>Protein Name</b>	Golgin subfamily A member 2
<b>Purification Process</b>	Protein A
<b>Specificity</b>	Endogenous
<b>Formulation</b>	PBS, 50% glycerol, 0.05% Proclin 300, 0.05%BSA
<b>Source</b>	Monoclonal, Rabbit,IgG
<b>Dilution</b>	IHC 1:200-1:1000; WB 1:2000-1:10000; IF 1:200-1:1000; ELISA 1:5000-1:20000; IP 1:50-1:200; Note: For IHC, we suggest antigen retrieval with TE buffer pH 9.0
<b>Concentration</b>	0.5 mg/ml
<b>Purity</b>	≥90%
<b>Storage Stability</b>	-15° C to -25° C/1 year(Do not lower than -25° C)
<b>Synonyms</b>	Golgin subfamily A member 2 (130 kDa cis-Golgi matrix protein ; GM130 ; GM130 autoantigen ; Golgin-95)
<b>Observed Band</b>	130kD
<b>Calculated Molecular Weight</b>	113kD
<b>Cell Pathway</b>	Cytoplasm
<b>Tissue Specificity</b>	Brain,Cervix,Colon adenocarcinoma,Epithelium,Heart,Hepatocyte,Liver,Placenta,Thymus,
<b>Function</b>	Domain:Extended rod-like protein with coiled-coil domains.,Function:Golgi auto-antigen; probably involved in maintaining cis-Golgi structure.,sequence Caution:Sequence differs from that shown after position 814 due to an internal deletion.,similarity:Belongs to the GOLGA2 family.,subunit:Part of a larger oligomeric complex. Interacts with p115 (By similarity). Interacts with RAB1B that has been activated by GTP-binding. Interacts with GORASP1/GRASP65 and ZFPL1.,
<b>Background</b>	The Golgi apparatus, which participates in glycosylation and transport of proteins and lipids inThe secretory pathway, consists of a series of stacked cisternae (flattened membrane sacs). Interactions betweenThe Golgi and microtubules are thought to be important forThe reorganization ofThe Golgi after it fragments during





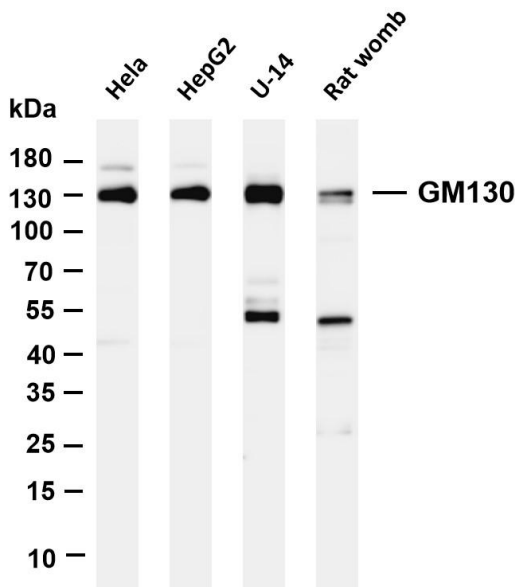
mitosis. This gene encodes one of the golgins, a family of proteins localized to the Golgi. This encoded protein has been postulated to play roles in the stacking of Golgi cisternae and in vesicular transport. Several alternatively spliced transcript variants of this gene have been described, but the full-length nature of these variants has not been determined. [provided by RefSeq, Feb 2010],

**matters needing attention**

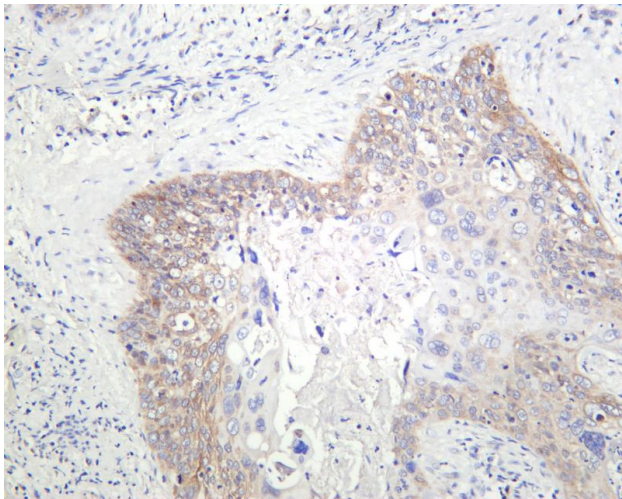
Avoid repeated freezing and thawing!

**Usage suggestions**

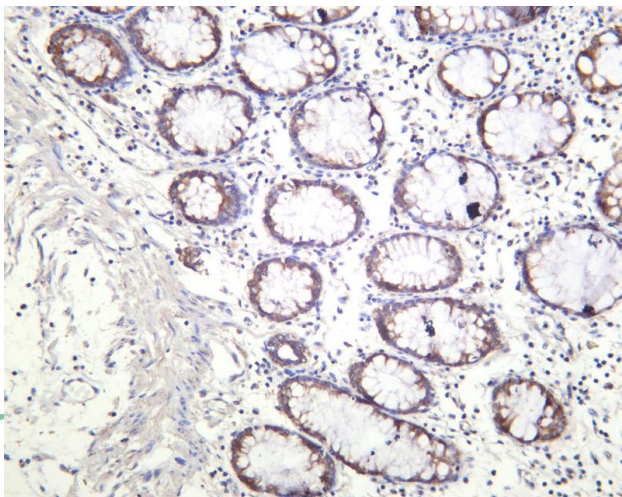
This product can be used in immunological reaction related experiments. For more information, please consult technical personnel.



Various whole cell lysates were separated by 4-20% SDS-PAGE, and the membrane was blotted with anti-GM130 antibody. The HRP-conjugated Goat anti-Rabbit IgG(H + L) antibody was used to detect the antibody. Lane 1: HeLa Lane 2: HepG2 Lane 3: U-14 Lane 4: Rat womb Predicted band size: 113kDa Observed band size: 130kDa

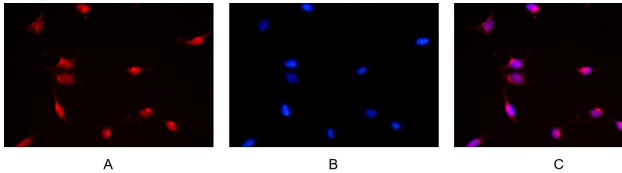


Human cervical carcinoma was stained with anti-GM130 rabbit antibody

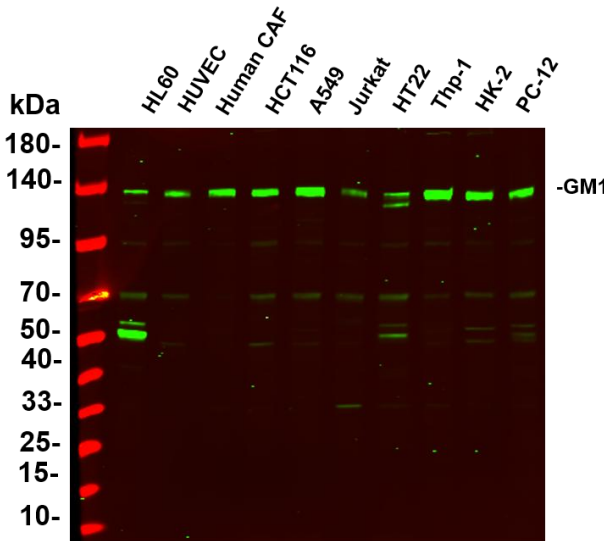


Human colon was stained with anti-GM130 rabbit antibody





Immunofluorescence analysis of HEK293. Picture A: GM130 antibody (red). Picture B: DAPI (blue). Picture C: Merge of A+B



Various whole cell lysates were separated by 4-20% SDS-PAGE, and the primary antibody was used at 4°C, over night with a 1:2500 dilution. The Dylight 800-conjugated Goat anti-Rabbit antibody (Cat:RS23920) was used to detect the antibody. Lane1: HL60 - Human promyelocytic leukemia cell Lane2: HUVEC - Human umbilical vein endothelial cell Lane3: Human CAF - Human cancer-associated fibroblast Lane4: HCT116 - Human colorectal carcinoma Lane5: A549 - Human lung carcinoma Lane6: Jurkat - Human T lymphocyte leukemia Lane7: HT22 - Mouse hippocampal neuronal Lane8: Thp-1 - Human monocytic leukemia Lane9: HK-2 - Human proximal tubular epithelial Lane10: PC-12 - Rat adrenal pheochromocytoma Predicted band size: 113kDa Observed band size: 130kDa

## 杭州臻优品生物科技有限公司

### 热销产品:

蛋白、一抗、抗体对、ELISA试剂盒、生化试剂盒  
CCK8试剂盒、QPCR检测试剂盒

### 检测服务:

ELISA检测及定制服务 | 生化检测 | PCR、QPCR检测 | WB检测  
ICO-IP检测 | 切片 | 染色 | 免疫组化 | 免疫荧光 | 透射电镜全套  
| 宏基因组、转录组、基因组、蛋白组、代谢组测序



关注官网



关注客服