



BRG1 Rabbit mAb

Catalog No	YP-rAb-17859
Isotype	IgG
Reactivity	Human,Mouse,Rat
Applications	WB,IHC,IF,ELISA
Gene Name	SMARCA4
Protein Name	Transcription activator BRG1
Purification Process	Protein A
Specificity	Endogenous
Formulation	PBS, 50% glycerol, 0.05% Proclin 300, 0.05%BSA
Source	Monoclonal, Rabbit,IgG
Dilution	IHC 1:200-1:1000; WB 1:2000-1:10000; IF 1:200-1:1000; ELISA 1:5000-1:20000; Note: For IHC, we suggest antigen retrieval with TE buffer pH 9.0
Concentration	0.5 mg/ml
Purity	≥90%
Storage Stability	-15° C to -25° C/1 year(Do not lower than -25° C)
Synonyms	SMARCA4 ; BAF190A ; BRG1 ; SNF2B ; SNF2L4 ; Transcription activator BRG1 ; ATP-dependent helicase SMARCA4 ; BRG1-associated factor 190A ; BAF190A ; Mitotic growth and transcription activator ; Protein BRG-1 ; Protein brahma homolog 1 ; SNF2-beta ; SWI/S
Observed Band	220kD
Calculated Molecular Weight	185kD
Cell Pathway	Nucleus
Tissue Specificity	Colocalizes with ZEB1 in E-cadherin-negative cells from established lines, and stroma of normal colon as well as in de-differentiated epithelial cells at the invasion front of colorectal carcinomas (at protein level).
Function	Transcriptional coactivator cooperating with nuclear hormone receptors to potentiate transcriptional activation. Also involved in vitamin D-coupled transcription regulation via its association with the WINAC complex, a chromatin-remodeling complex recruited by vitamin D receptor (VDR), which is required for the ligand-bound VDR-mediated transrepression of the CYP27B1 gene.,PTM:Phosphorylated upon DNA damage, probably by ATM or ATR.,similarity:Belongs to the SNF2/RAD54 helicase family.,similarity:Contains 1 bromo domain.,similarity:Contains 1 helicase ATP-binding





domain.,similarity:Contains 1 helicase C-terminal domain.,similarity:Contains 1 HSA domain.,subunit:Interacts with NR3C1, PGR, SMARD1, TOPBP1 and ZMIM2/ZIMP7. Component of the BAF complex, which includes at least actin (ACTB), ARID1A, ARID1B/BAF250, SMARCA2, SMARCA4/BRG1, ACTL6A/BAF53, ACTL6B/BAF53B, SMARCE1/BAF57, SMARCC1/BAF155, SMARCC2/BAF170, SMARCB1/SNF5/INI1, and one or more of SMARCD1/BAF60A, SMARCD2/BAF60B, or SMARCD3/BAF60C. In muscle cells, the BAF complex also contains DPF3. Component of the BAF53 complex, at least composed of BAF53A, RUVBL1, SMARCA4/BRG1, and TRRAP, which preferentially acetylates histone H4 (and H2A) within nucleosomes. Component of the WINAC complex, at least composed of SMARCA2, SMARCA4, SMARCB1, SMARCC1, SMARCC2, SMARCD1, SMARCE1, ACTL6A, BAZ1B/WSTF, ARID1A, SUPT16H, CHAF1A and TOP2B.,

Background

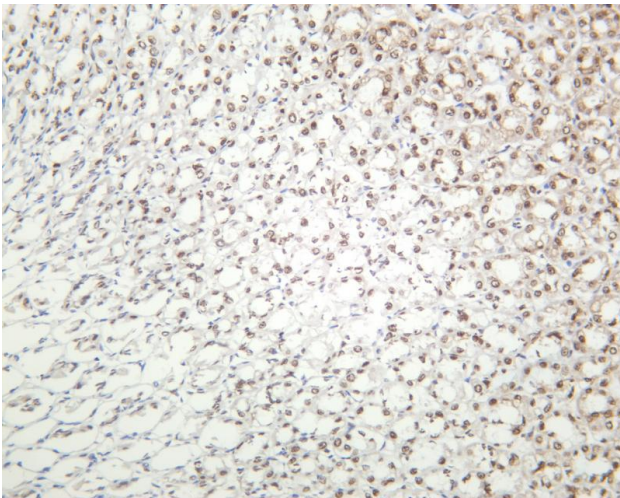
The protein encoded by this gene is a member ofThe SWI/SNF family of proteins and is similar toThe brahma protein of Drosophila. Members of this family have helicase and ATPase activities and are thought to regulate transcription of certain genes by alteringThe chromatin structure around those genes.The encoded protein is part ofThe large ATP-dependent chromatin remodeling complex SNF/SWI, which is required for transcriptional activation of genes normally repressed by chromatin. In addition, this protein can bind BRCA1, as well as regulateThe expression ofThe tumorigenic protein CD44. Mutations in this gene cause rhabdoid tumor predisposition syndrome type 2. Multiple transcript variants encoding different isoforms have been found for this gene. [provided by RefSeq, May 2012],

matters needing attention

Avoid repeated freezing and thawing!

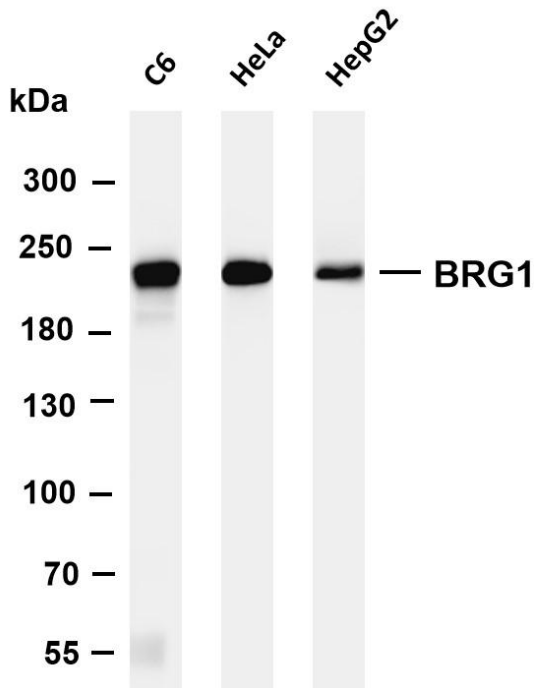
Usage suggestions

This product can be used in immunological reaction related experiments. For more information, please consult technical personnel.

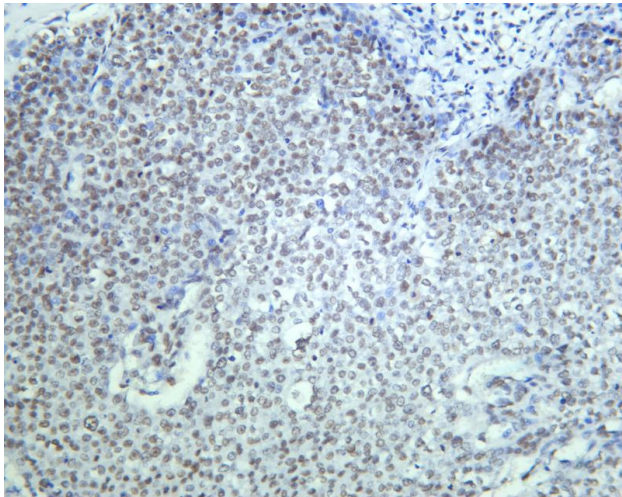


Rat stomach was stained with anti-BRG1 rabbit antibody

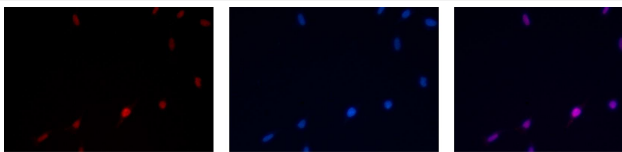




Various whole cell lysates were separated by 4-8% SDS-PAGE, and the membrane was blotted with anti-BRG1 antibody. The HRP-conjugated Goat anti-Rabbit IgG(H + L) antibody was used to detect the antibody. Lane 1: C6 Lane 2: HeLa Lane 3: HepG2
Predicted band size: 185kDa Observed band size: 220kDa



Human breast carcinoma was stained with anti-BRG1 Rabbit antibody



Immunofluorescence analysis of HEK293. Picture A: BRG1 antibody (red). Picture B: DAPI (blue). Picture C: Merge of A+B

A

B

C

杭州臻优品生物科技有限公司

热销产品:

蛋白、一抗、抗体对、ELISA试剂盒、生化试剂盒
CCK8试剂盒、QPCR检测试剂盒

检测服务:

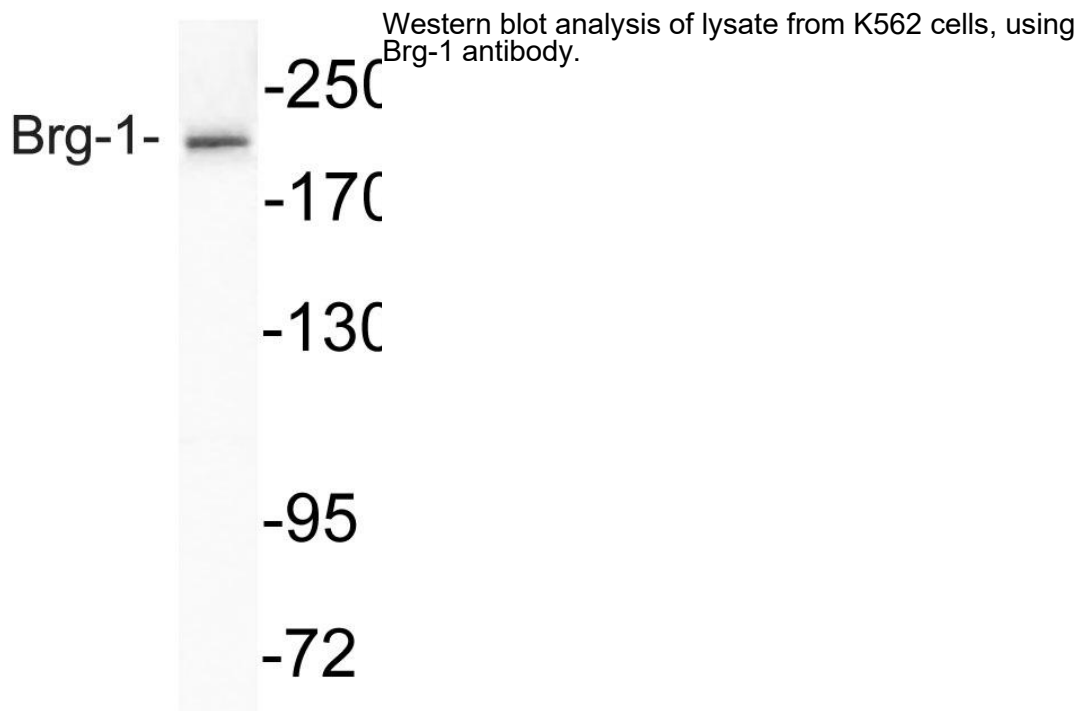
ELISA检测及定制服务 | 生化检测 | PCR、QPCR检测 | WB检测
ICO-IP检测 | 切片 | 染色 | 免疫组化 | 免疫荧光 | 透射电镜全套
| 宏基因组、转录组、基因组、蛋白组、代谢组测序



关注官网



关注客服



杭州臻优品生物科技有限公司

热销产品:

蛋白、一抗、抗体对、ELISA试剂盒、生化试剂盒
CCK8试剂盒、QPCR检测试剂盒

检测服务:

ELISA检测及定制服务 | 生化检测 | PCR、QPCR检测 | WB检测
ICO-IP检测 | 切片 | 染色 | 免疫组化 | 免疫荧光 | 透射电镜全套
| 宏基因组、转录组、基因组、蛋白组、代谢组测序



关注官网



关注客服