



LAMB1 Rabbit mAb

Catalog No	YP-rAb-17851
Isotype	IgG
Reactivity	Human,Mouse,Rat
Applications	WB,IHC,IF,ELISA
Gene Name	LAMB1
Protein Name	Laminin subunit beta-1
Purification Process	Protein A
Specificity	Endogenous
Formulation	PBS, 50% glycerol, 0.05% Proclin 300, 0.05%BSA
Source	Monoclonal, Rabbit,IgG
Dilution	IHC 1:200-1:1000; WB 1:2000-1:10000; IF 1:200-1:1000; ELISA 1:5000-1:20000; Note: For IHC, we suggest antigen retrieval with TE buffer pH 9.0
Concentration	0.5 mg/ml
Purity	≥90%
Storage Stability	-15° C to -25° C/1 year(Do not lower than -25° C)
Synonyms	LAMB1 ; Laminin subunit beta-1 ; Laminin B1 chain ; Laminin-1 subunit beta ; Laminin-10 subunit beta ; Laminin-12 subunit beta ; Laminin-2 subunit beta ; Laminin-6 subunit beta ; Laminin-8 subunit beta
Observed Band	240kD
Calculated Molecular Weight	198kD
Cell Pathway	Secreted
Tissue Specificity	Colon,Liver,Muscle,Plasma,
Function	Domain:Domains VI and IV are globular.,Domain:The alpha-helical domains I and II are thought to interact with other laminin chains to form a coiled coil structure.,Function:Binding to cells via a high affinity receptor, laminin is thought to mediate the attachment, migration and organization of cells into tissues during embryonic development by interacting with other extracellular matrix components.,similarity:Contains 1 laminin IV type B domain.,similarity:Contains 1 laminin N-terminal domain.,similarity:Contains 13 laminin EGF-like domains.,subcellular location:Major component.,subunit:Laminin is a complex glycoprotein, consisting of three different polypeptide chains (alpha, beta, gamma), which are bound to each other by disulfide bonds into a cross-shaped molecule comprising one long and three short arms with globules at each end.





Beta-1 is a subunit of laminin-1 (EHS laminin), laminin-2 (merosin), and laminin-6 (K-laminin).

Background

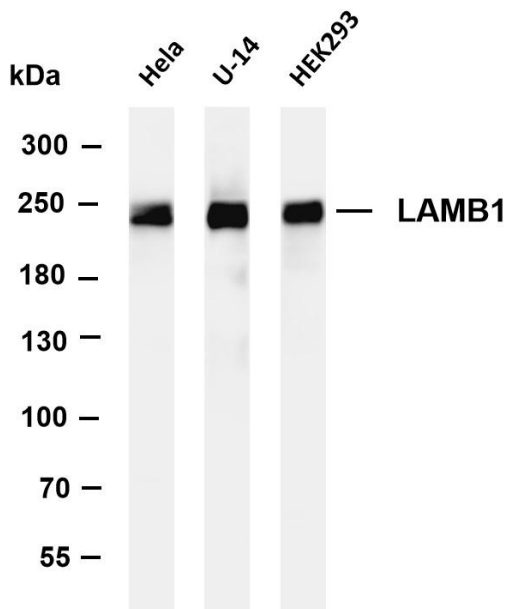
Laminins, a family of extracellular matrix glycoproteins, are the major noncollagenous constituent of basement membranes. They have been implicated in a wide variety of biological processes including cell adhesion, differentiation, migration, signaling, neurite outgrowth and metastasis. Laminins are composed of 3 non identical chains: laminin alpha, beta and gamma (formerly A, B1, and B2, respectively) and they form a cruciform structure consisting of 3 short arms, each formed by a different chain, and a long arm composed of all 3 chains. Each laminin chain is a multidomain protein encoded by a distinct gene. Several isoforms of each chain have been described. Different alpha, beta and gamma chain isomers combine to give rise to different heterotrimeric laminin isoforms which are designated by Arabic numerals in the order of their discovery, i.e. alpha1beta1gamma1 heterotrimer is laminin 1. The bio

matters needing attention

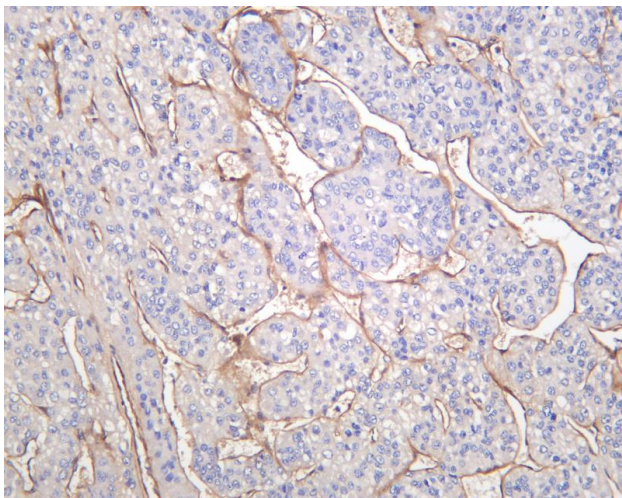
Avoid repeated freezing and thawing!

Usage suggestions

This product can be used in immunological reaction related experiments. For more information, please consult technical personnel.



Various whole cell lysates were separated by 4-8% SDS-PAGE, and the membrane was blotted with anti- LAMB1 antibody. The HRP-conjugated Goat anti-Rabbit IgG(H + L) antibody was used to detect the antibody. Lane 1: HeLa Lane 2: U-14 Lane 3: HEK293 Predicted band size: 198kDa Observed band size: 240kDa



Human hepatocellular carcinoma was stained with anti-LAMB1 rabbit antibody

杭州臻优品生物科技有限公司

热销产品:

蛋白、一抗、抗体对、ELISA试剂盒、生化试剂盒
CCK8试剂盒、QPCR检测试剂盒

检测服务:

ELISA检测及定制服务 | 生化检测 | PCR、QPCR检测 | WB检测
ICO-IP检测 | 切片 | 染色 | 免疫组化 | 免疫荧光 | 透射电镜全套
| 宏基因组、转录组、基因组、蛋白组、代谢组测序



关注官网



关注客服