



Ly6g Rabbit mAb

Catalog No	YP-rAb-17846
Isotype	IgG
Reactivity	Mouse
Applications	WB,IHC,IF,ELISA
Gene Name	Ly6g
Protein Name	Lymphocyte antigen 6G;Ly-6G;Ly-6G.1;
Purification Process	Protein A
Specificity	Endogenous
Formulation	PBS, 50% glycerol, 0.05% Proclin 300, 0.05%BSA
Source	Monoclonal, Rabbit,IgG
Dilution	IHC 1:1000-1:4000; WB 1:1000-1:5000; IF 1:200-1:1000; ELISA 1:5000-1:20000; Note: For IHC, we suggest antigen retrieval with TE buffer pH 9.0
Concentration	0.5 mg/ml
Purity	≥90%
Storage Stability	-15° C to -25° C/1 year(Do not lower than -25° C)
Synonyms	Gr-1 ; Gr1 ; Ly-6G.1 ; Ly6G ; Lymphocyte antigen 6 complex locus G ; Lymphocyte antigen 6G
Observed Band	14kD
Calculated Molecular Weight	14kD
Cell Pathway	Membrane
Tissue Specificity	Expressed in bone marrow.
Function	Ly6G is a GPI-anchored protein, that is also known as the myeloid differentiation antigen Gr1. The antigen is transiently expressed on monocytes in the bone marrow. The level of antigen expression in the bone marrow directly correlates with granulocyte differentiation and maturation. Ly6G is expressed predominantly on neutrophils, also in a subset of eosinophils, differentiating pre-monocytes, and plasmacytoid dendritic cells.
Background	Predicted to enable acetylcholine receptor binding activity and acetylcholine receptor inhibitor activity. Predicted to be involved in acetylcholine receptor signaling pathway. Located in external side of plasma membrane. Is expressed in large intestine; small intestine; and spleen. [provided by Alliance of Genome Resources, Nov 2024]



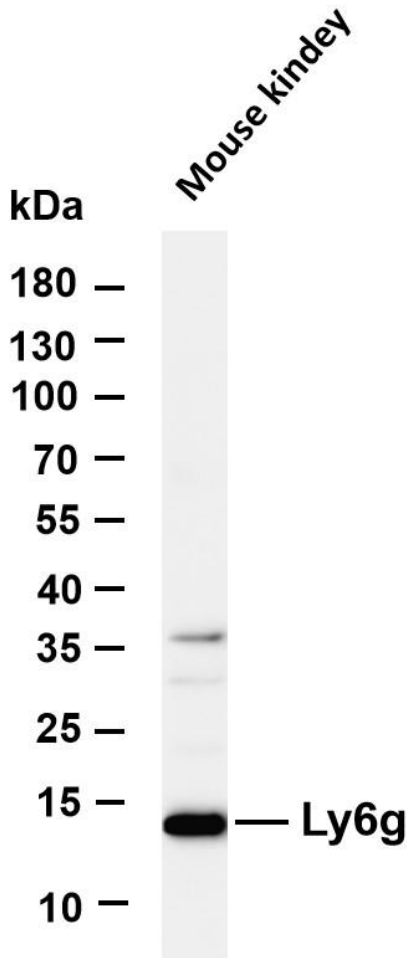


matters needing attention

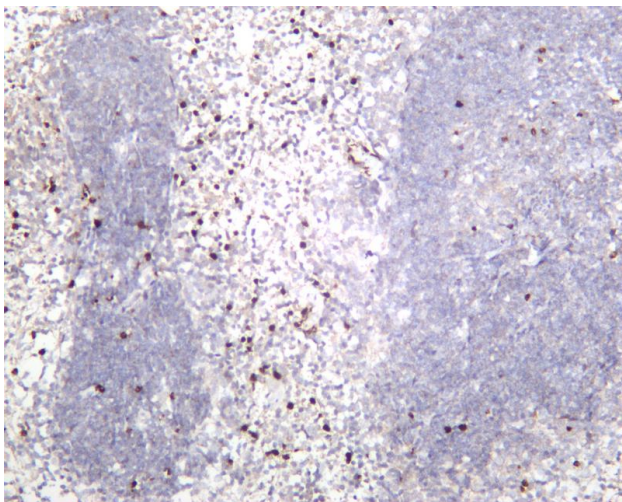
Avoid repeated freezing and thawing!

Usage suggestions

This product can be used in immunological reaction related experiments. For more information, please consult technical personnel.



Various whole cell lysates were separated by 4-20% SDS-PAGE, and the membrane was blotted with anti-Ly6g antibody. The HRP-conjugated Goat anti-Rabbit IgG(H + L) antibody was used to detect the antibody. Lane 1: Mouse kidney Predicted band size: 14kDa Observed band size: 14kDa



Mouse spleen was stained with anti-Ly6g rabbit antibody

杭州臻优品生物科技有限公司

热销产品:

蛋白、一抗、抗体对、ELISA试剂盒、生化试剂盒
CCK8试剂盒、QPCR检测试剂盒

检测服务:

ELISA检测及定制服务 | 生化检测 | PCR、QPCR检测 | WB检测
ICO-IP检测 | 切片 | 染色 | 免疫组化 | 免疫荧光 | 透射电镜全套
| 宏基因组、转录组、基因组、蛋白组、代谢组测序



关注官网



关注客服