



# PP2A $\alpha / \beta$ Rabbit mAb

<b>Catalog No</b>	YP-rAb-17843
<b>Isotype</b>	IgG
<b>Reactivity</b>	Human,Mouse,Rat
<b>Applications</b>	WB,IHC,IF,IP,ELISA
<b>Gene Name</b>	PPP2CA;PPP2CB
<b>Protein Name</b>	Serine/threonine-protein phosphatase 2A catalytic subunit alpha isoform;PP2A-beta;PP2A-alpha;Replication protein C;RP-C;
<b>Purification Process</b>	Protein A
<b>Specificity</b>	Endogenous
<b>Formulation</b>	PBS, 50% glycerol, 0.05% Proclin 300, 0.05%BSA
<b>Source</b>	Monoclonal, Rabbit,IgG
<b>Dilution</b>	IHC 1:200-1:1000; WB 1:2000-1:10000; IF 1:200-1:1000; ELISA 1:5000-1:20000; IP 1:50-1:200; Note: For IHC, we suggest antigen retrieval with TE buffer pH 9.0
<b>Concentration</b>	0.5 mg/ml
<b>Purity</b>	$\geq 90\%$
<b>Storage Stability</b>	$-15^{\circ}\text{C}$ to $-25^{\circ}\text{C}$ /1 year(Do not lower than $-25^{\circ}\text{C}$ )
<b>Synonyms</b>	PP2A A ; PP2A alpha ; PP2A B ; PP2A beta ; PP2A-alpha ; PP2A-beta ; PP2AA_HUMAN ; PP2Aalpha ; PP2AB_HUMAN ; PP2Abeta ; PP2Ac ; PP2CA ; PP2Calpha ; PP2CB ; PPP2CA ; PPP2CB ; Protein phosphatase 2 catalytic subunit alpha isoform ; Protein phosphatase 2 catalytic subunit beta isoform ; Protein phosphatase type 2A catalytic subunit ; Replication protein C ; RP C ; RP-C ; RPC ; Serine/threonine protein phosphatase 2A catalytic subunit alpha isoform ; Serine/threonine protein phosphatase 2A catalytic subunit beta isoform ; Serine/threonine-protein phosphatase 2A catalytic subunit alpha isoform ;
<b>Observed Band</b>	36kD
<b>Calculated Molecular Weight</b>	36kD
<b>Cell Pathway</b>	Cytoplasm
<b>Tissue Specificity</b>	Fibroblast,Liver,Lung,Placenta,Testis,Uterus,baseline
<b>Function</b>	PP2A can modulate the activity of phosphorylase B kinase casein kinase 2, mitogen-stimulated S6 kinase, and MAP-2 kinase. Cooperates with SGOL2 to protect centromeric cohesin from separase-mediated cleavage in oocytes

杭州臻优品生物科技有限公司

热销产品:

蛋白、一抗、抗体对、ELISA试剂盒、生化试剂盒  
CCK8试剂盒、QPCR检测试剂盒

检测服务:

ELISA检测及定制服务 | 生化检测 | PCR、QPCR检测 | WB检测  
ICO-IP检测 | 切片 | 染色 | 免疫组化 | 免疫荧光 | 透射电镜全套  
| 宏基因组、转录组、基因组、蛋白组、代谢组测序



关注官网



关注客服



specifically during meiosis I (By similarity). Can dephosphorylate SV40 large T antigen and p53/TP53. Dephosphorylates SV40 large T antigen, preferentially on serine residues 120, 123, 677, and perhaps 679. The C subunit was most active, followed by the AC form, which was more active than the ABC form, and activity of all three forms was strongly stimulated by manganese, and to a lesser extent by magnesium. Dephosphorylation by the AC form, but not C or ABC form is inhibited by small T antigen. Activates RAF1 by dephosphorylating it at 'Ser-259'.

### Background

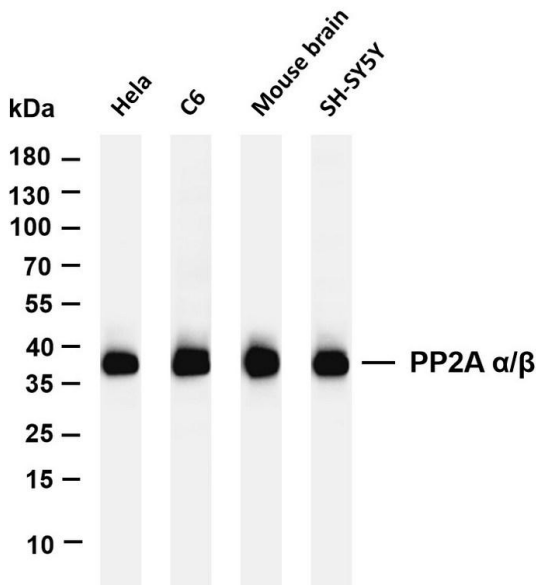
This gene encodes the phosphatase 2A catalytic subunit. Protein phosphatase 2A is one of the four major Ser/Thr phosphatases, and it is implicated in the negative control of cell growth and division. It consists of a common heteromeric core enzyme, which is composed of a catalytic subunit and a constant regulatory subunit, that associates with a variety of regulatory subunits. This gene encodes an alpha isoform of the catalytic subunit. [provided by RefSeq, Jul 2008],

### matters needing attention

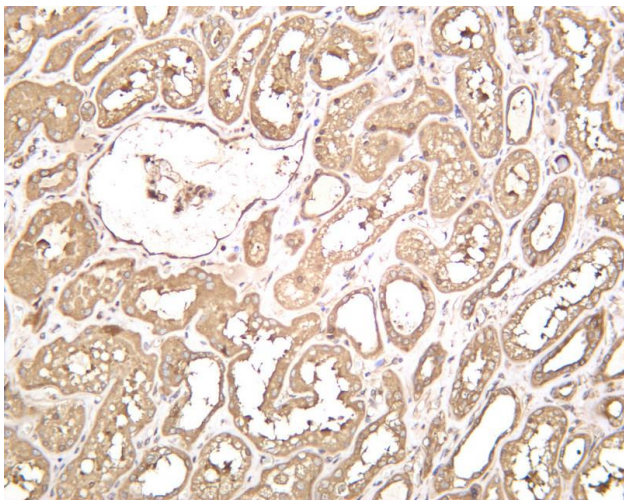
Avoid repeated freezing and thawing!

### Usage suggestions

This product can be used in immunological reaction related experiments. For more information, please consult technical personnel.



Various whole cell lysates were separated by 4-20% SDS-PAGE, and the membrane was blotted with anti-PP2A  $\alpha/\beta$  antibody. The HRP-conjugated Goat anti-Rabbit IgG(H + L) antibody was used to detect the antibody. Lane 1: HeLa Lane 2: C6 Lane 3: Mouse brain Lane 4: SH-SY5Y Predicted band size: 36kDa Observed band size: 36kDa



Human kidney was stained with anti-PP2A  $\alpha/\beta$  rabbit antibody

## 杭州臻优品生物科技有限公司

### 热销产品:

蛋白、一抗、抗体对、ELISA试剂盒、生化试剂盒  
CCK8试剂盒、QPCR检测试剂盒

### 检测服务:

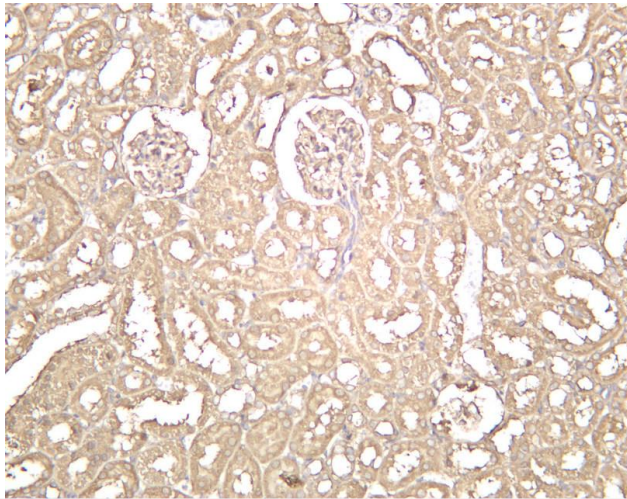
ELISA检测及定制服务 | 生化检测 | PCR、QPCR检测 | WB检测  
ICO-IP检测 | 切片 | 染色 | 免疫组化 | 免疫荧光 | 透射电镜全套  
| 宏基因组、转录组、基因组、蛋白组、代谢组测序



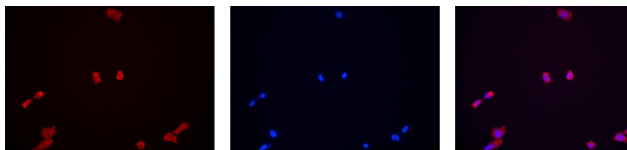
关注官网



关注客服



Rat kidney was stained with anti-PP2A  $\alpha/\beta$  rabbit antibody



Immunofluorescence analysis of HEK293. Picture A: PP2A  $\alpha/\beta$  antibody (red). Picture B: DAPI (blue). Picture C: Merge of A+B

A

B

C

