



CD146 Rabbit mAb

| | |
|------------------------------------|---|
| Catalog No | YP-rAb-17842 |
| Isotype | IgG |
| Reactivity | Human,Mouse,Rat |
| Applications | WB,IHC,IF,ELISA |
| Gene Name | MCAM MUC18 |
| Protein Name | CD146 |
| Purification Process | Protein A |
| Specificity | Endogenous |
| Formulation | PBS, 50% glycerol, 0.05% Proclin 300, 0.05%BSA |
| Source | Monoclonal, Rabbit,IgG |
| Dilution | IHC 1:1000-1:4000; WB 1:2000-1:10000; IF 1:200-1:1000; ELISA 1:5000-1:20000; Note: For IHC, we suggest antigen retrieval with TE buffer pH 9.0 |
| Concentration | 0.5 mg/ml |
| Purity | ≥90% |
| Storage Stability | -15° C to -25° C/1 year(Do not lower than -25° C) |
| Synonyms | Cell surface glycoprotein MUC18 (Cell surface glycoprotein P1H12 ; Melanoma cell adhesion molecule ; Melanoma-associated antigen A32 ; Melanoma-associated antigen MUC18 ; S-endo 1 endothelial-associated antigen ; CD antigen CD146) |
| Observed Band | 125kD |
| Calculated Molecular Weight | 72kD |
| Cell Pathway | Membrane |
| Tissue Specificity | Detected in endothelial cells in vascular tissue throughout the body. May appear at the surface of neural crest cells during their embryonic migration. Appears to be limited to vascular smooth muscle in normal adult tissues. Associated with tumor progression and the development of metastasis in human malignant melanoma. Expressed most strongly on metastatic lesions and advanced primary tumors and is only rarely detected in benign melanocytic nevi and thin primary melanomas with a low probability of metastasis. |
| Function | Plays a role in cell adhesion, and in cohesion of the endothelial monolayer at intercellular junctions in vascular tissue. Its expression may allow melanoma cells to interact with cellular elements of the vascular system, thereby enhancing |





hematogeneous tumor spread. Could be an adhesion molecule active in neural crest cells during embryonic development. Acts as surface receptor that triggers tyrosine phosphorylation of FYN and PTK2, and a transient increase in the intracellular calcium concentration.,similarity:Contains 2 Ig-like V-type (immunoglobulin-like) domains.,similarity:Contains 3 Ig-like C2-type (immunoglobulin-like) domains.,tissue specificity:Detected in endothelial cells in vascular tissue throughout the body. May appear at the surface of neural crest cells during their embryonic migration. Appears to be limited to vascular smooth muscle in normal adult tissues. Associated with tumor progression and the development of metastasis in human malignant melanoma. Expressed most strongly on metastatic lesions and advanced primary tumors and is only rarely detected in benign melanocytic nevi and thin primary melanomas with a low probability of metastasis.,

Background

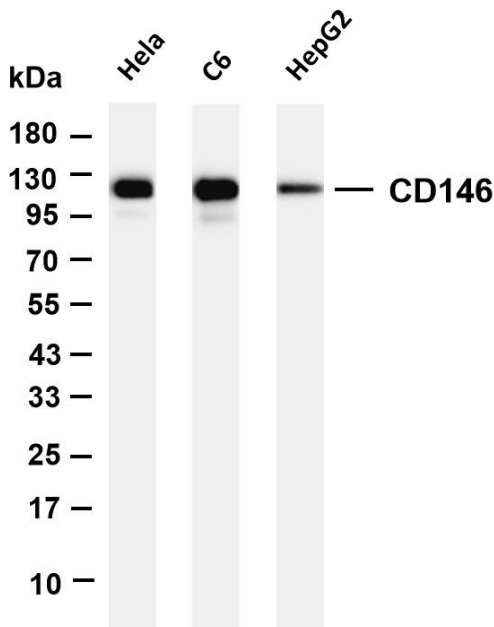
function:Plays a role in cell adhesion, and in cohesion of the endothelial monolayer at intercellular junctions in vascular tissue. Its expression may allow melanoma cells to interact with cellular elements of the vascular system, thereby enhancing hematogeneous tumor spread. Could be an adhesion molecule active in neural crest cells during embryonic development. Acts as surface receptor that triggers tyrosine phosphorylation of FYN and PTK2, and a transient increase in the intracellular calcium concentration.,similarity:Contains 2 Ig-like V-type (immunoglobulin-like) domains.,similarity:Contains 3 Ig-like C2-type (immunoglobulin-like) domains.,tissue specificity:Detected in endothelial cells in vascular tissue throughout the body. May appear at the surface of neural crest cells during their embryonic migration. Appears to be limited to vascular smooth muscle in normal adult tissues. Associated with tumor progression and the development of metastasis in human malignant melanoma. Expressed most strongly on metastatic lesions and advanced primary tumors and is only rarely detected in benign melanocytic nevi and thin primary melanomas with a low probability of metastasis.,

matters needing attention

Avoid repeated freezing and thawing!

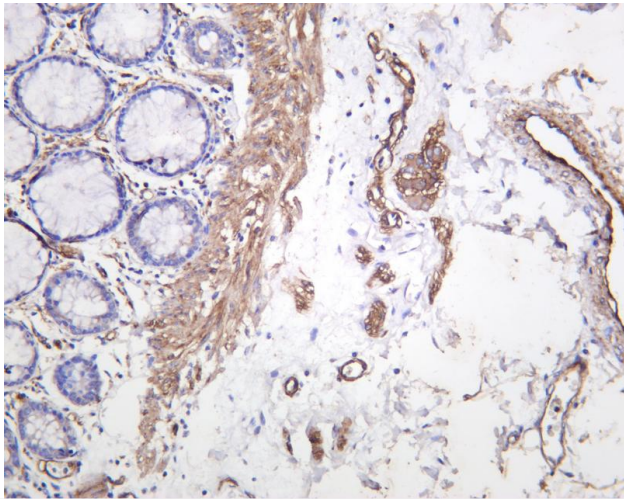
Usage suggestions

This product can be used in immunological reaction related experiments. For more information, please consult technical personnel.

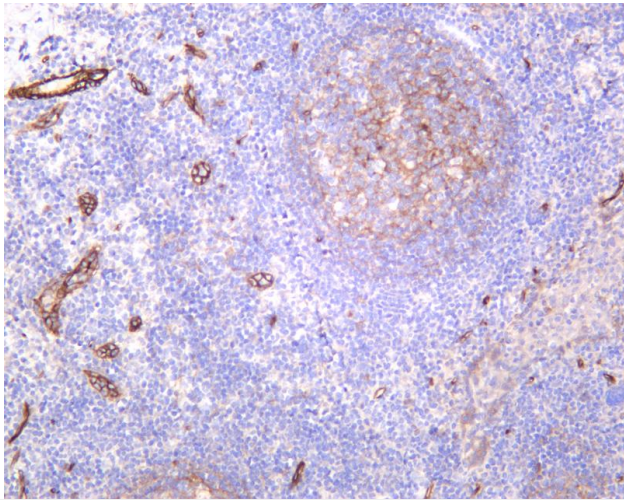


Various whole cell lysates were separated by 4-20% SDS-PAGE, and the membrane was blotted with anti-CD146 antibody. The HRP-conjugated Goat anti-Rabbit IgG(H + L) antibody was used to detect the antibody. Lane 1: HeLa Lane 2: C6 Lane 3: HepG2
Predicted band size: 72kDa Observed band size: 125kDa

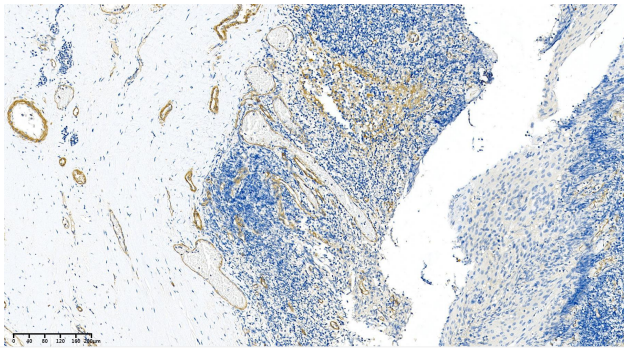




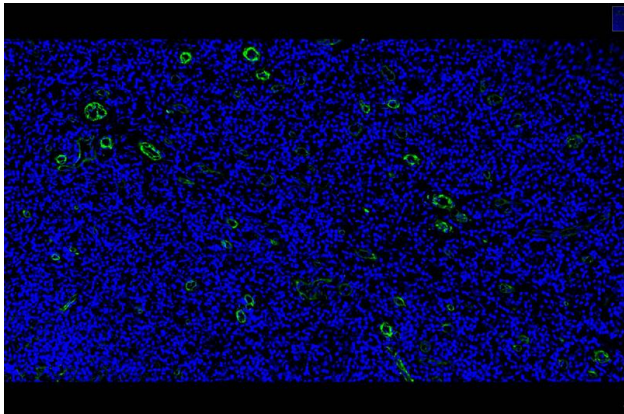
Human colon was stained with anti-CD146 rabbit antibody



Human tonsil was stained with anti-CD146 rabbit antibody



Human tonsils was stained with anti-CD146 Rabbit antibody



Human tonsils was stained with anti-CD146 Rabbit antibody

