



# p90RSK(phospho Thr359/Ser363) Rabbit mAb

<b>Catalog No</b>	YP-rAb-17835
<b>Isotype</b>	IgG
<b>Reactivity</b>	Human,Mouse,Rat
<b>Applications</b>	WB,IHC,IF,IP,ELISA
<b>Gene Name</b>	RPS6KA1 MAPKAPK1A RSK1
<b>Protein Name</b>	Ribosomal protein S6 kinase alpha-1
<b>Purification Process</b>	Protein A
<b>Specificity</b>	Endogenous
<b>Formulation</b>	PBS, 50% glycerol, 0.05% Proclin 300, 0.05%BSA
<b>Source</b>	Monoclonal, Rabbit,IgG
<b>Dilution</b>	IHC 1:500-1:2000; WB 1:2000-1:10000; IF 1:200-1:1000; ELISA 1:5000-1:20000; IP 1:50-1:200; Note: For IHC, we suggest antigen retrieval with TE buffer pH 9.0
<b>Concentration</b>	0.5 mg/ml
<b>Purity</b>	≥90%
<b>Storage Stability</b>	-15° C to -25° C/1 year(Do not lower than -25° C)
<b>Synonyms</b>	RPS6KA1 ; MAPKAPK1A ; RSK1 ; Ribosomal protein S6 kinase alpha-1 ; S6K-alpha-1 ; 90 kDa ribosomal protein S6 kinase 1 ; p90-RSK 1 ; p90RSK1 ; p90S6K ; MAP kinase-activated protein kinase 1a ; MAPK-activated protein kinase 1a ; MAPKAP kinase 1a ; MAPKAP
<b>Observed Band</b>	83kD
<b>Calculated Molecular Weight</b>	83kD
<b>Cell Pathway</b>	Cytoplasm, Nucleus
<b>Tissue Specificity</b>	Colon,Epithelium,
<b>Function</b>	Catalytic activity:ATP + a protein = ADP + a phosphoprotein.,Caution:The sequence shown here is derived from an Ensembl automatic analysis pipeline and should be considered as preliminary data.,cofactor:Magnesium.,enzyme regulation:Activated by multiple phosphorylations on threonine and serine residues.,Function:Serine/threonine kinase that may play a role in mediating the growth-factor and stress induced activation of the transcription factor CREB.,PTM:Autophosphorylated on Ser-380, as part of the activation process.,similarity:Belongs to the protein kinase superfamily.,similarity:Belongs to the protein kinase superfamily. AGC Ser/Thr protein kinase family. S6 kinase





subfamily.,similarity:Contains 1 AGC-kinase C-terminal domain.,similarity:Contains 2 protein kinase domains.,subunit:Forms a complex with either ERK1 or ERK2 in quiescent cells. Transiently dissociates following mitogenic stimulation.,

### Background

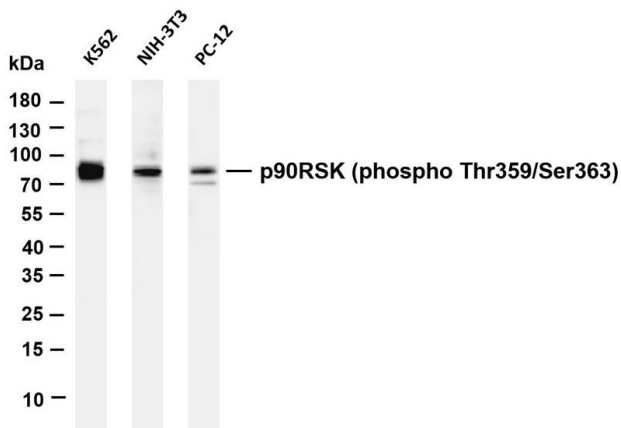
ribosomal protein S6 kinase A1(RPS6KA1) Homo sapiens This gene encodes a member of the RSK (ribosomal S6 kinase) family of serine/threonine kinases. This kinase contains 2 nonidentical kinase catalytic domains and phosphorylates various substrates, including members of the mitogen-activated kinase (MAPK) signalling pathway. The activity of this protein has been implicated in controlling cell growth and differentiation. Alternate transcriptional splice variants, encoding different isoforms, have been characterized. [provided by RefSeq, Jul 2008],

### matters needing attention

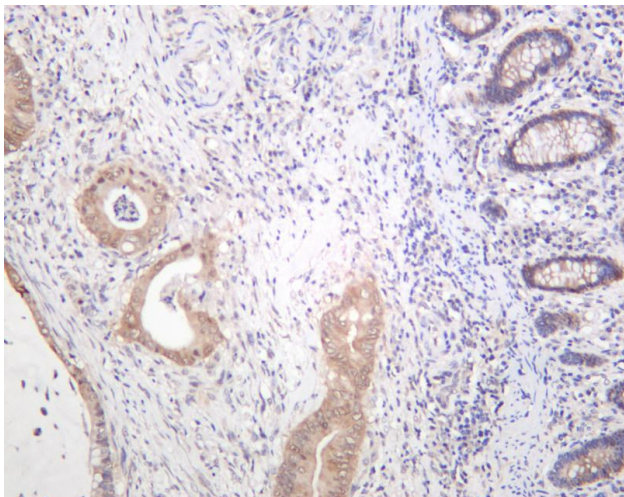
Avoid repeated freezing and thawing!

### Usage suggestions

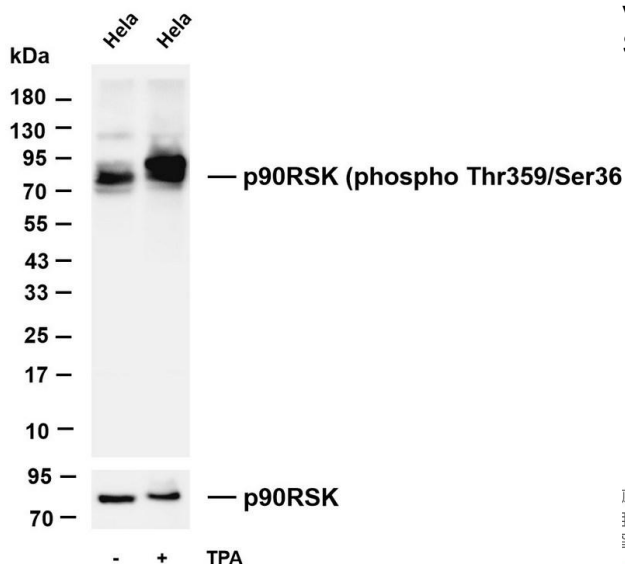
This product can be used in immunological reaction related experiments. For more information, please consult technical personnel.



Various whole cell lysates were separated by 4-20% SDS-PAGE, and the membrane was blotted with anti-p90

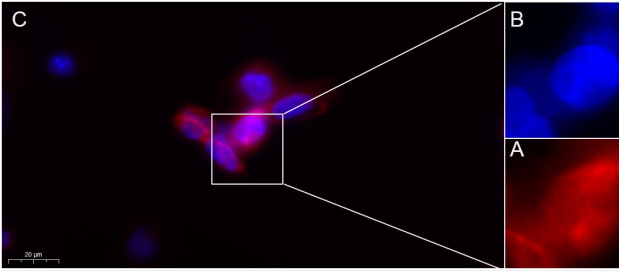


Human colon carcinoma was stained with anti-p90



Various whole cell lysates were separated by 4-20% SDS-PAGE, and the membrane was blotted with anti-p90





Immunofluorescence analysis of A431 cell. 1, primary Antibody was diluted at 1:200(4~C overnight). 2, Goat Anti Rabbit IgG (H&L) - AF594 Secondary antibody(catalog No: RS3611) was diluted at 1:500(room temperature, 50min).

## 杭州臻优品生物科技有限公司

### 热销产品:

蛋白、一抗、抗体对、ELISA试剂盒、生化试剂盒  
CCK8试剂盒、QPCR检测试剂盒

### 检测服务:

ELISA检测及定制服务 | 生化检测 | PCR、QPCR检测 | WB检测  
ICO-IP检测 | 切片 | 染色 | 免疫组化 | 免疫荧光 | 透射电镜全套  
| 宏基因组、转录组、基因组、蛋白组、代谢组测序



关注官网



关注客服