



β -actin Rabbit mAb

Catalog No	YP-rAb-17830
Isotype	IgG
Reactivity	Human, Mouse, Rat, Chicken, Bovine, Hamster, Pig, Cat, Dog, Sheep, Fish, Rabbit, Carp, Bird, Geese, Rainbow trout
Applications	WB, IHC, IF, ELISA
Gene Name	ACTB
Protein Name	Actin cytoplasmic 1
Purification Process	Protein A
Specificity	Endogenous
Formulation	PBS, 50% glycerol, 0.05% Proclin 300, 0.05% BSA
Source	Monoclonal, Rabbit, IgG
Dilution	IHC 1:2000-1:20000; WB 1:2000-1:10000; IF 1:200-1:1000; ELISA 1:5000-1:20000; Note: For IHC, we suggest antigen retrieval with TE buffer pH 9.0
Concentration	0.5 mg/ml
Purity	≥90%
Storage Stability	-15° C to -25° C/1 year (Do not lower than -25° C)
Synonyms	ACTB ; Actin ; cytoplasmic 1 ; Beta-actin ; Actin β ; β -Actin ; Beta actin ; B actin ; actin Beta ;
Observed Band	42kD
Calculated Molecular Weight	42kD
Cell Pathway	Cytoplasm
Tissue Specificity	B-cell lymphoma, Brain, Cajal-Retzius cell, Eye, Fetal brain cortex, Foreskin, Hepatocellular carcinoma
Function	Disease: Defects in ACTB are a cause of dystonia juvenile-onset (DYTJ) [MIM:607371]. DYTJ is a form of dystonia with juvenile onset. Dystonia is defined by the presence of sustained involuntary muscle contraction, often leading to abnormal postures. DYTJ patients manifest progressive, generalized, dopa-unresponsive dystonia, developmental malformations and sensory hearing loss. Function: Actins are highly conserved proteins that are involved in various types of cell motility and are ubiquitously expressed in all eukaryotic cells. miscellaneous: In vertebrates 3 main groups of actin isoforms, alpha, beta and gamma have been identified. The alpha actins are found in muscle tissues and are a major constituent of the contractile apparatus. The beta and gamma actins coexist in most cell types as components of the cytoskeleton and as





mediators of internal cell motility.,similarity:Belongs to the actin family.,subunit:Polymerization of globular actin (G-actin) leads to a structural filament (F-actin) in the form of a two-stranded helix. Each actin can bind to 4 others. Component of the BAF complex, which includes at least actin (ACTB), ARID1A, ARID1B/BAF250, SMARCA2, SMARCA4/BRG1, ACTL6A/BAF53, ACTL6B/BAF53B, SMARCE1/BAF57 SMARCC1/BAF155, SMARCC2/BAF170, SMARCB1/SNF5/INI1, and one or more of SMARCD1/BAF60A, SMARCD2/BAF60B, or SMARCD3/BAF60C. In muscle cells, the BAF complex also contains DPF3. Found in a complex with XPO6, Ran, ACTB and PFN1. Interacts with XPO6.,

Background

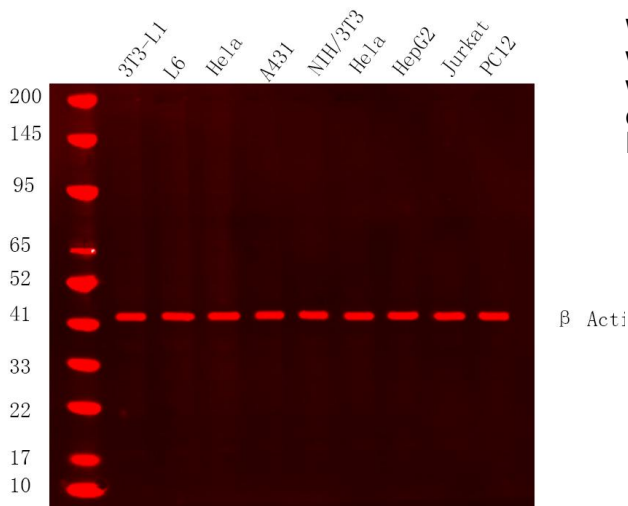
This gene encodes one of six different actin proteins. Actins are highly conserved proteins that are involved in cell motility, structure, and integrity. This actin is a major constituent of the contractile apparatus and one of the two nonmuscle cytoskeletal actins. [provided by RefSeq, Jul 2008],

matters needing attention

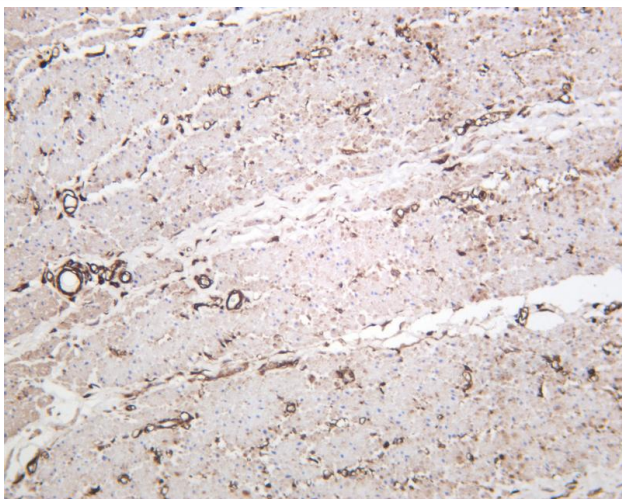
Avoid repeated freezing and thawing!

Usage suggestions

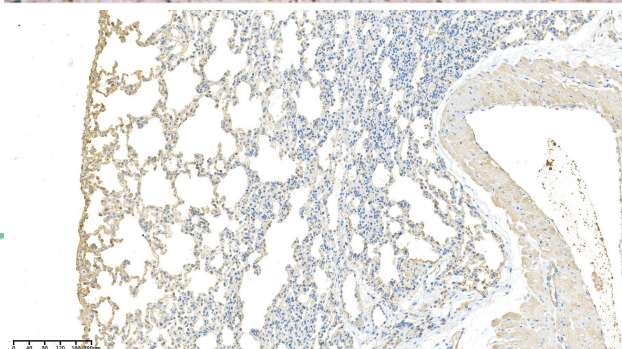
This product can be used in immunological reaction related experiments. For more information, please consult technical personnel.



Western Blot analysis using Various whole cell lysates were separated by 4-20% SDS-PAGE, and the membrane was blotted with anti β Actin Rabbit mAb-YM8343 diluted at 1:20000. Secondary : Dylight 800, Goat Anti Rabbit IgG



Human colon was stained with anti- β Actin rabbit antibody

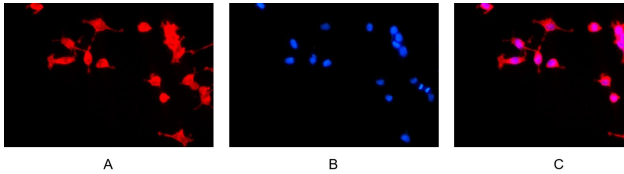
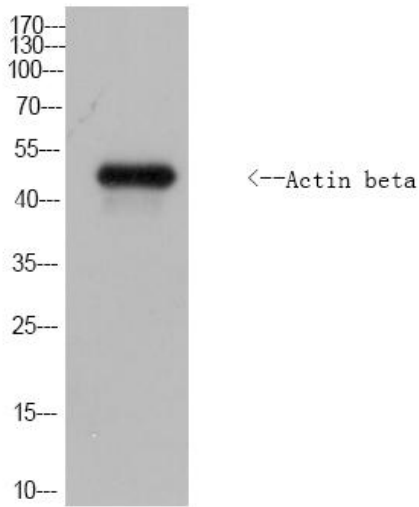


Rat lungs was stained with anti- β Actin Rabbit antibody





Western Blot analysis of Drosophilidae cells using Actin beta rabbit pAb(Drosophilidae). Secondary antibody(catalog#:RS0002) was diluted at 1:20000



Immunofluorescence analysis of HEK293. Picture A: β Actin antibody (red). Picture B: DAPI (blue). Picture C: Merge of A+B

