



CREB-1 Rabbit mAb

Catalog No	YP-rAb-17829
Isotype	IgG
Reactivity	Human,Mouse,Rat,Pig
Applications	WB,IHC,IF,ELISA
Gene Name	CREB1
Protein Name	Cyclic AMP-responsive element-binding protein 1
Purification Process	Protein A
Specificity	Endogenous
Formulation	PBS, 50% glycerol, 0.05% Proclin 300, 0.05%BSA
Source	Monoclonal, Rabbit,IgG
Dilution	IHC 1:2000-1:10000; WB 1:2000-1:10000; IF 1:200-1:1000; ELISA 1:5000-1:20000; Note: For IHC, we suggest antigen retrieval with TE buffer pH 9.0
Concentration	0.5 mg/ml
Purity	≥90%
Storage Stability	-15° C to -25° C/1 year(Do not lower than -25° C)
Synonyms	CREB1 ; Cyclic AMP-responsive element-binding protein 1 ; CREB-1 ; cAMP-responsive element-binding protein 1
Observed Band	43kD
Calculated Molecular Weight	35kD
Cell Pathway	Nucleus
Tissue Specificity	Eye,Placenta,Spleen,Testis,
Function	Disease:A chromosomal aberration involving CREB1 is associated with angiomatoid fibrous histiocytoma (AFH) [MIM:612160]. Translocation t(2;22)(q33;q12) with CREB1 generates a EWSR1/CREB1 fusion gene that is most common genetic abnormality in this tumor type.,Function:This protein binds the cAMP response element (CRE), a sequence present in many viral and cellular promoters. CREB stimulates transcription on binding to the CRE. Transcription activation is enhanced by the TORC coactivators which act independently of Ser-133 phosphorylation. Implicated in synchronization of circadian rhythmicity.,PTM:Stimulated by phosphorylation. Phosphorylation of both Ser-133 and Ser-142 in the SCN regulates the activity of CREB and participates in circadian rhythm generation. Phosphorylation of Ser-133 allows CREBBP binding

杭州臻优品生物科技有限公司

热销产品:

蛋白、一抗、抗体对、ELISA试剂盒、生化试剂盒
CCK8试剂盒、QPCR检测试剂盒

检测服务:

ELISA检测及定制服务 | 生化检测 | PCR、QPCR检测 | WB检测
ICO-IP检测 | 切片 | 染色 | 免疫组化 | 免疫荧光 | 透射电镜全套
| 宏基因组、转录组、基因组、蛋白组、代谢组测序



关注官网



关注客服



(By similarity). Phosphorylated upon DNA damage, probably by ATM or ATR.,similarity:Belongs to the bZIP family.,similarity:Contains 1 bZIP domain.,similarity:Contains 1 KID (kinase-inducible) domain.,subunit:Interacts with PPRC1. Binds DNA as a dimer. This dimer is stabilized by magnesium ions. Interacts, through the bZIP domain, with the coactivators TORC1/CRTC1, TORC2/CRTC2 and TORC3/CRTC3. When phosphorylated on Ser-133, binds CREBBP.,

Background

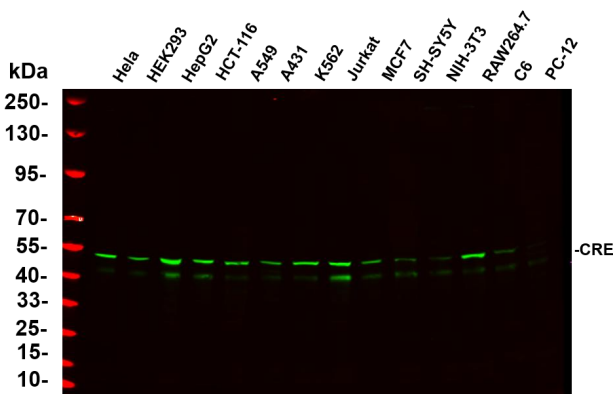
This gene encodes a transcription factor that is a member of the leucine zipper family of DNA binding proteins. This protein binds as a homodimer to the cAMP-responsive element, an octameric palindrome. The protein is phosphorylated by several protein kinases, and induces transcription of genes in response to hormonal stimulation of the cAMP pathway. Alternate splicing of this gene results in several transcript variants encoding different isoforms. [provided by RefSeq, Mar 2016],

matters needing attention

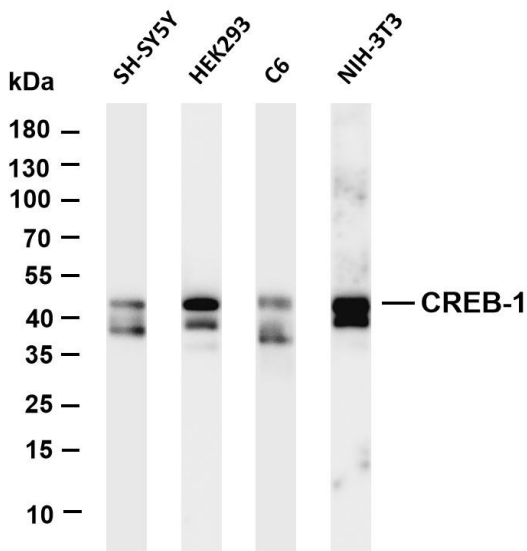
Avoid repeated freezing and thawing!

Usage suggestions

This product can be used in immunological reaction related experiments. For more information, please consult technical personnel.

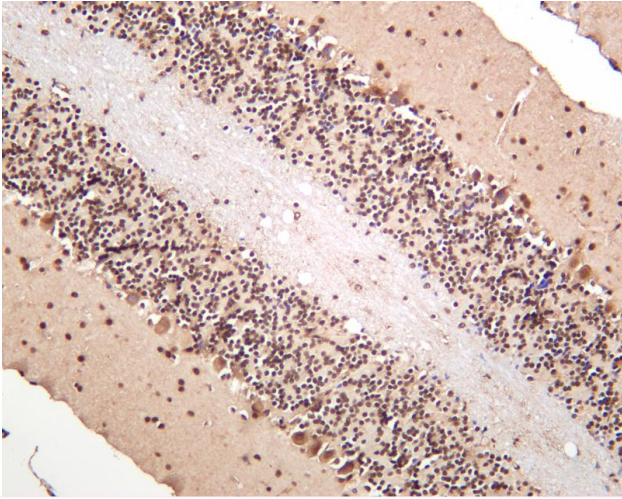


Various whole cell lysates were separated by 4-20% SDS-PAGE, and the primary antibody was used at 4°C, over night with a 1:5000 dilution. The Dylight 800-conjugated Goat anti-Rabbit antibody

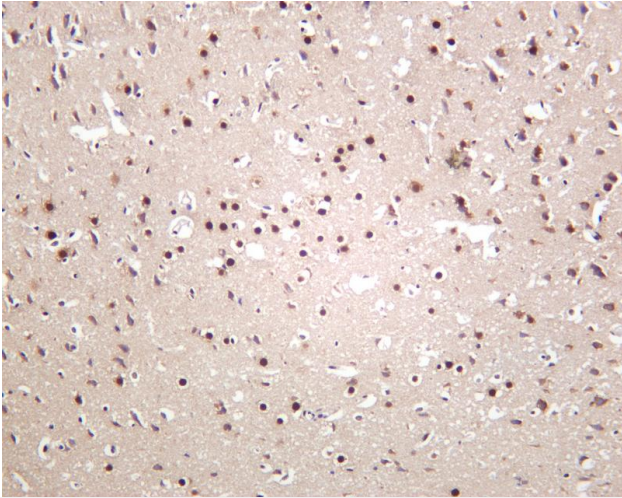


Various whole cell lysates were separated by 4-20% SDS-PAGE, and the membrane was blotted with anti-CREB-1 antibody. The HRP-conjugated Goat anti-Rabbit IgG(H + L) antibody was used to detect the antibody. Lane 1: SH-SY5Y Lane 2: HEK293 Lane 3: C6 Lane 4: NIH-3T3 Predicted band size: 37kDa Observed band size: 43kDa

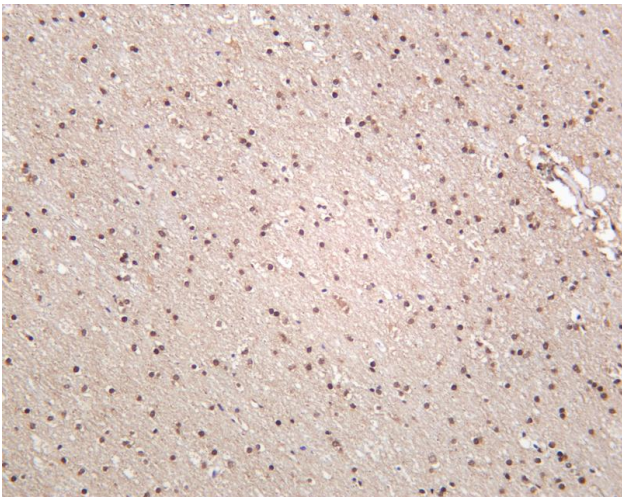




Mouse brain was stained with anti-CREB rabbit antibody



Rat brain was stained with anti-CREB rabbit antibody



Human brain was stained with anti-CREB rabbit antibody

