



## β III Tubulin Rabbit mAb

<b>Catalog No</b>	YP-rAb-17823
<b>Isotype</b>	IgG
<b>Reactivity</b>	Human,Mouse,Rat
<b>Applications</b>	WB,IHC,IF,IP,ELISA
<b>Gene Name</b>	TUBB3
<b>Protein Name</b>	Tubulin beta-3 chain
<b>Purification Process</b>	Protein A
<b>Specificity</b>	Endogenous
<b>Formulation</b>	PBS, 50% glycerol, 0.05% Proclin 300, 0.05%BSA
<b>Source</b>	Monoclonal, Rabbit,IgG
<b>Dilution</b>	IHC 1:1000-1:5000; WB 1:2000-1:10000; IF 1:200-1:1000; ELISA 1:5000-1:20000; IP 1:50-1:200; Note: For IHC, we suggest antigen retrieval with TE buffer pH 9.0
<b>Concentration</b>	0.5 mg/ml
<b>Purity</b>	≥90%
<b>Storage Stability</b>	-15° C to -25° C/1 year(Do not lower than -25° C)
<b>Synonyms</b>	TUBB3 ; TUBB4 ; Tubulin beta-3 chain ; Tubulin beta-4 chain ; Tubulin beta-III
<b>Observed Band</b>	50kD
<b>Calculated Molecular Weight</b>	50kD
<b>Cell Pathway</b>	Cytoplasm
<b>Tissue Specificity</b>	Expression is primarily restricted to central and peripheral nervous system. Greatly increased expression in most cancerous tissues.
<b>Function</b>	Domain:The highly acidic C-terminal region may bind cations such as calcium.,Function:Receptor for MSH (alpha, beta and gamma) and ACTH. The activity of this receptor is mediated by G proteins which activate adenylate cyclase.,Function:Tubulin is the major constituent of microtubules. It binds two moles of GTP, one at an exchangeable site on the beta chain and one at a non-exchangeable site on the alpha-chain.,polymorphism:Genetic variations in MC1R are associated with variation in skin/hair/eye pigmentation type 2 (SHEP2) [MIM:266300]. Hair, eye and skin pigmentation are among the most visible examples of human phenotypic variation, with a broad normal range that is subject to substantial geographic stratification. In the case of skin, individuals tend to have lighter pigmentation with increasing distance from the equator. By contrast, the majority of variation in human eye and hair color is found among

杭州臻优品生物科技有限公司

热销产品:

蛋白、一抗、抗体对、ELISA试剂盒、生化试剂盒  
CCK8试剂盒、QPCR检测试剂盒

检测服务:

ELISA检测及定制服务 | 生化检测 | PCR、QPCR检测 | WB检测  
ICO-IP检测 | 切片 | 染色 | 免疫组化 | 免疫荧光 | 透射电镜全套  
| 宏基因组、转录组、基因组、蛋白组、代谢组测序



关注官网



关注客服



individuals of European ancestry, with most other human populations fixed for brown eyes and black hair.,polymorphism:Variations in MC1R are linked to the degree of skin pigmentation (Types I-IV). Type I skin the most lightly pigmented and type IV the most dark pigmented. Partial loss-of-function mutations are associated with fair skin, poor tanning and increased skin cancer risk.,similarity:Belongs to the G-protein coupled receptor 1 family.,similarity:Belongs to the tubulin family.,subunit:Dimer of alpha and beta chains.,tissue specificity:Melanocytes and corticoadrenal tissue.,

### Background

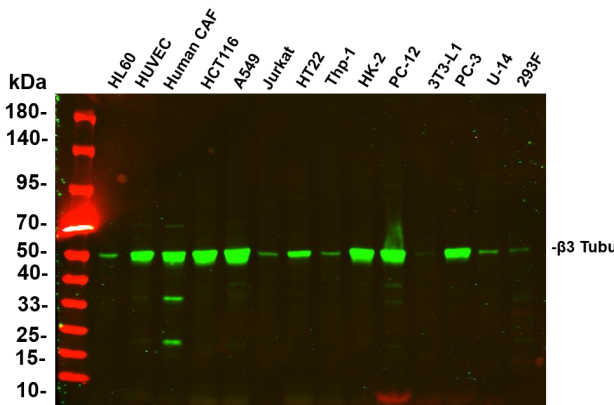
tubulin beta 3 class III(TUBB3) Homo sapiens This gene encodes a class III member of the beta tubulin protein family. Beta tubulins are one of two core protein families (alpha and beta tubulins) that heterodimerize and assemble to form microtubules. This protein is primarily expressed in neurons and may be involved in neurogenesis and axon guidance and maintenance. Mutations in this gene are the cause of congenital fibrosis of the extraocular muscles type 3. Alternate splicing results in multiple transcript variants. A pseudogene of this gene is found on chromosome 6. [provided by RefSeq, Oct 2010],

### matters needing attention

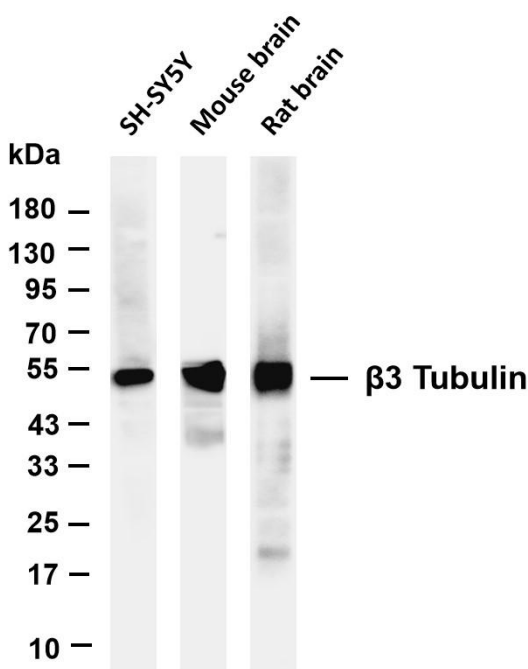
Avoid repeated freezing and thawing!

### Usage suggestions

This product can be used in immunological reaction related experiments. For more information, please consult technical personnel.

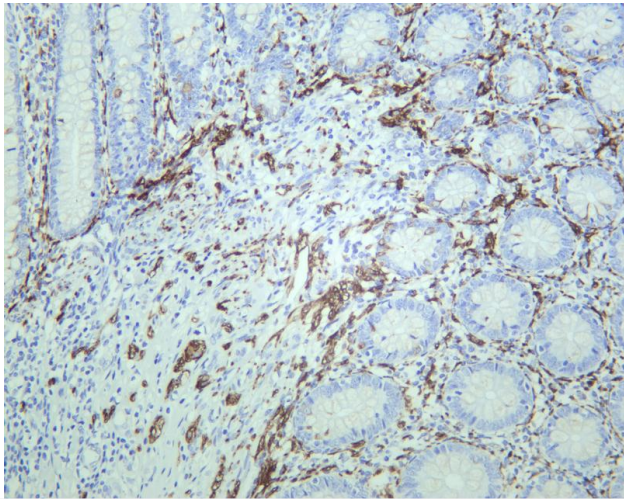


Various whole cell lysates were separated by 4-20% SDS-PAGE, and the primary antibody was used at 4°C, over night with a 1:5000 dilution . The Dylight 800-conjugated Goat anti-Rabbit antibody

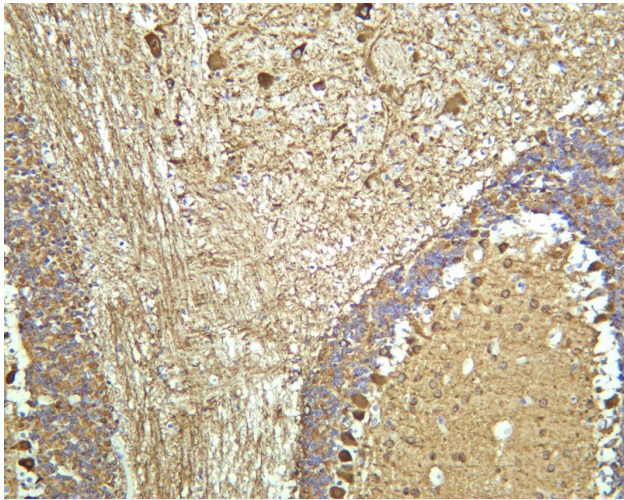


Various whole cell lysates were separated by 4-20% SDS-PAGE, and the membrane was blotted with anti-β 3 Tubulin antibody. The HRP-conjugated Goat anti-Rabbit IgG(H + L) antibody was used to detect the antibody. Lane 1: SH-SY5Y Lane 2: Mouse brain Lane 3: Rat brain Predicted band size: 50kDa Observed band size: 50kDa

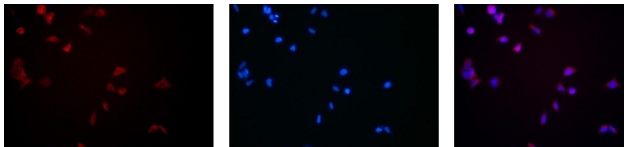




Human appendix was stained with anti-  $\beta$  3 Tubulin rabbit antibody



Mouse brain was stained with anti-  $\beta$  3 Tubulin rabbit antibody



Immunofluorescence analysis of HEK293. Picture A:  $\beta$  3 Tubulin antibody (red). Picture B: DAPI (blue). Picture C: Merge of A+B

A

B

C

