



CD43 Rabbit mAb

Catalog No	YP-rAb-17807
Isotype	IgG
Reactivity	Human
Applications	WB,IHC,IF,ELISA
Gene Name	SPN CD43
Protein Name	Leukosialin (GPL115) (Galactoglycoprotein) (GALGP) (Leukocyte sialoglycoprotein) (Sialophorin) (CD antigen CD43) [Cleaved into: CD43 cytoplasmic tail (CD43-ct) (CD43ct)]
Purification Process	Protein A
Specificity	Endogenous
Formulation	PBS, 50% glycerol, 0.05% Proclin 300, 0.05%BSA
Source	Monoclonal, Rabbit,IgG
Dilution	IHC 1:200-1:1000; WB 1:2000-1:10000; IF 1:200-1:1000; ELISA 1:5000-1:20000; Note: For IHC, we suggest antigen retrieval with TE buffer pH 9.0
Concentration	0.5 mg/ml
Purity	≥90%
Storage Stability	-15° C to -25° C/1 year(Do not lower than -25° C)
Synonyms	Leukosialin (Galactoglycoprotein ; GALGP ; Leukocyte sialoglycoprotein ; Sialophorin ; CD antigen CD43)
Observed Band	130kD
Calculated Molecular Weight	40kD
Cell Pathway	Membrane
Tissue Specificity	Cell surface of thymocytes, T-lymphocytes, neutrophils, plasma cells and myelomas.
Function	Disease:CD43 expression is defective on the T-cells of males with the immunodeficiency Wiskott-Aldrich syndrome. Affected males are susceptible to opportunistic infections and do not respond to polysaccharide antigens, reflecting defects in cytotoxic and helper T-cell functions.,Function:One of the major glycoproteins of thymocytes and T lymphocytes. Plays a role in the physicochemical properties of the T-cell surface and in lectin binding. Presents carbohydrate ligands to selectins. Has an extended rodlike structure that could protrude above the glycocalyx of the cell and allow multiple glycan chains to be accessible for binding. Is a counter receptor for SN/Siglec-1 (By similarity). During T-cell activation is actively removed from the T-cell-APC (antigen-presenting cell) contact site thus suggesting a negative regulatory role in adaptive immune





response.,PTM:Glycosylated; has a high content of sialic acid and O-linked carbohydrate structures.,subunit:Interacts with HIPK2 via the cytoplasmic domain.,tissue specificity:Cell surface of thymocytes, T-lymphocytes, neutrophils, plasma cells and myelomas.,

Background

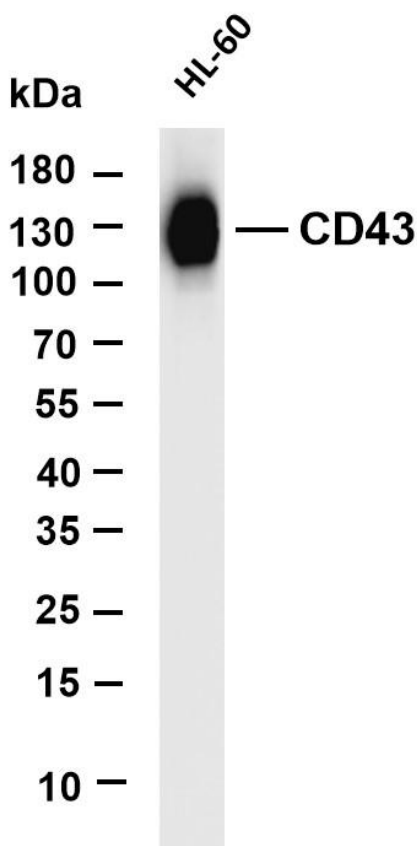
The protein encoded by this gene is a major sialoglycoprotein found on the surface of thymocytes, T lymphocytes, monocytes, granulocytes, and some B lymphocytes. It may be part of a physiologic ligand-receptor complex involved in T-cell activation. During T-cell activation, this protein is actively removed from the T-cell-APC (antigen-presenting cell) contact site, suggesting a negative regulatory role in adaptive immune response. [provided by RefSeq, Sep 2011],

matters needing attention

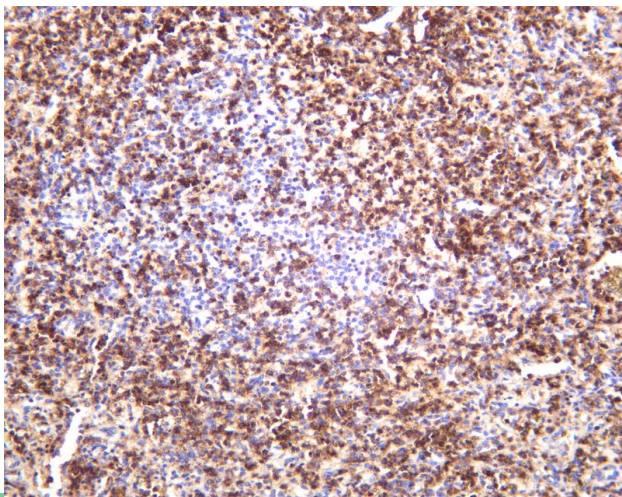
Avoid repeated freezing and thawing!

Usage suggestions

This product can be used in immunological reaction related experiments. For more information, please consult technical personnel.



Various whole cell lysates were separated by 4-20% SDS-PAGE, and the membrane was blotted with anti-CD43 antibody. The HRP-conjugated Goat anti-Rabbit IgG(H + L) antibody was used to detect the antibody. Lane 1: HL-60 Predicted band size: 40kDa Observed band size: 130kDa



Human spleen was stained with anti-CD43 rabbit antibody

杭州臻优品生物科技有限公司

热销产品:

蛋白、一抗、抗体对、ELISA试剂盒、生化试剂盒
CCK8试剂盒、QPCR检测试剂盒

检测服务:

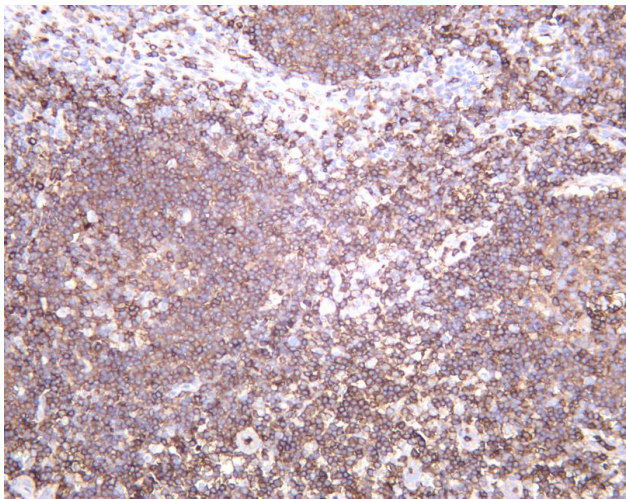
ELISA检测及定制服务 | 生化检测 | PCR、QPCR检测 | WB检测
ICO-IP检测 | 切片 | 染色 | 免疫组化 | 免疫荧光 | 透射电镜全套
| 宏基因组、转录组、基因组、蛋白组、代谢组测序



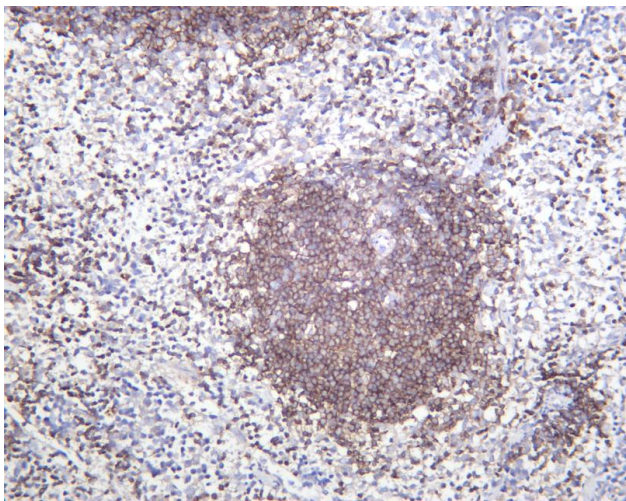
关注官网



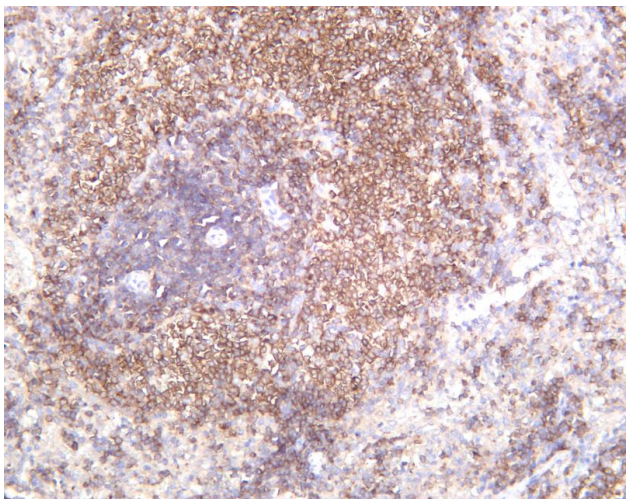
关注客服



Human tonsil was stained with anti-CD43 rabbit antibody



Mouse spleen was stained with anti-CD43 rabbit antibody



Rat spleen was stained with anti-CD43 rabbit antibody

