



CD10 Rabbit mAb

Catalog No	YP-rAb-17804
Isotype	IgG
Reactivity	Human,Mouse,Rat
Applications	WB,IHC,IF,IP,ELISA
Gene Name	MME EPN
Protein Name	Nepriylsin
Purification Process	Protein A
Specificity	Endogenous
Formulation	PBS, 50% glycerol, 0.05% Proclin 300, 0.05%BSA
Source	Monoclonal, Rabbit,IgG
Dilution	IHC 1:1000-1:4000; WB 1:2000-1:10000; IF 1:200-1:1000; ELISA 1:5000-1:20000; IP 1:50-1:200; Note: For IHC, we suggest antigen retrieval with TE buffer pH 9.0
Concentration	0.5 mg/ml
Purity	≥90%
Storage Stability	-15° C to -25° C/1 year(Do not lower than -25° C)
Synonyms	MME ; EPN ; Nepriylsin ; Atriopeptidase ; Common acute lymphocytic leukemia antigen ; CALLA ; Enkephalinase ; Neutral endopeptidase 24.11 ; NEP ; Neutral endopeptidase ; Skin fibroblast elastase ; SFE ; CD10
Observed Band	100kD
Calculated Molecular Weight	86kD
Cell Pathway	Membrane
Tissue Specificity	Adrenal cortex,Brain,Kidney,Placenta,
Function	Catalytic activity:Preferential cleavage of polypeptides between hydrophobic residues, particularly with Phe or Tyr at P1'. cofactor:Binds 1 zinc ion per subunit. Disease:Important cell surface marker in the diagnostic of human acute lymphocytic leukemia. enzyme regulation:Inhibited in a dose dependent manner by opiorphin. Function:Thermolysin-like specificity, but is almost confined on acting on polypeptides of up to 30 amino acids. Biologically important in the destruction of opioid peptides such as Met- and Leu-enkephalins by cleavage of a Gly-Phe bond. Involved in the degradation of atrial natriuretic factor (ANF). similarity:Belongs to the peptidase M13 family.

杭州臻优品生物科技有限公司

热销产品:

蛋白、一抗、抗体对、ELISA试剂盒、生化试剂盒
CCK8试剂盒、QPCR检测试剂盒

检测服务:

ELISA检测及定制服务 | 生化检测 | PCR、QPCR检测 | WB检测
ICO-IP检测 | 切片 | 染色 | 免疫组化 | 免疫荧光 | 透射电镜全套
| 宏基因组、转录组、基因组、蛋白组、代谢组测序



关注官网



关注客服



Background

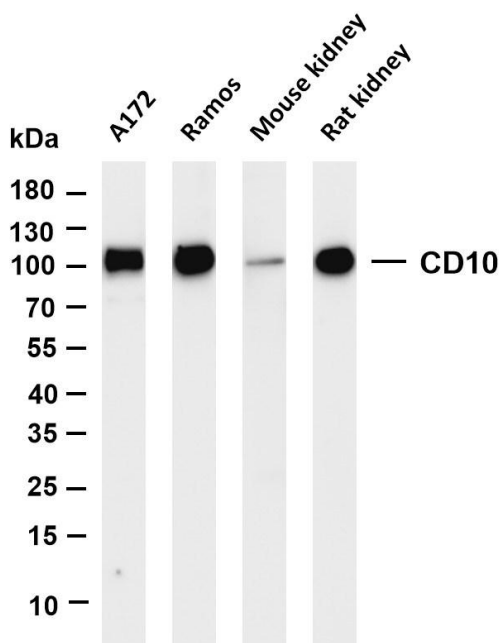
This gene encodes a common acute lymphocytic leukemia antigen that is an important cell surface marker in the diagnosis of human acute lymphocytic leukemia (ALL). This protein is present on leukemic cells of pre-B phenotype, which represent 85% of cases of ALL. This protein is not restricted to leukemic cells, however, and is found on a variety of normal tissues. It is a glycoprotein that is particularly abundant in kidney, where it is present on the brush border of proximal tubules and on glomerular epithelium. The protein is a neutral endopeptidase that cleaves peptides at the amino side of hydrophobic residues and inactivates several peptide hormones including glucagon, enkephalins, substance P, neurotensin, oxytocin, and bradykinin. This gene, which encodes a 100-kD type II transmembrane glycoprotein, exists in a single copy of greater than 45 kb. The 5' untranslated region of this

matters needing attention

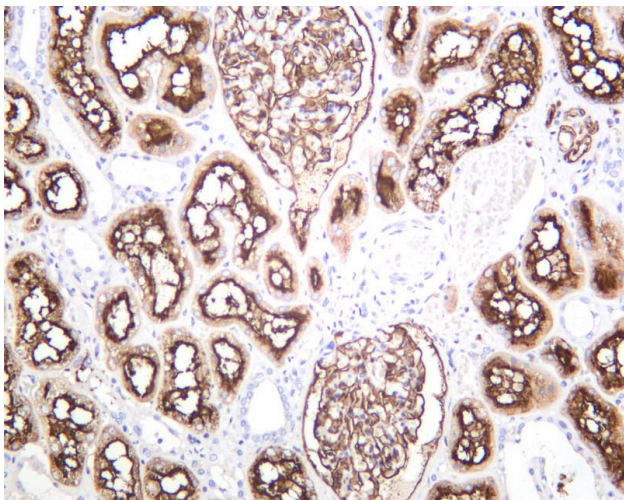
Avoid repeated freezing and thawing!

Usage suggestions

This product can be used in immunological reaction related experiments. For more information, please consult technical personnel.



Various whole cell lysates were separated by 4-20% SDS-PAGE, and the membrane was blotted with anti-CD10 antibody. The HRP-conjugated Goat anti-Rabbit IgG(H + L) antibody was used to detect the antibody. Lane 1: A172 Lane 2: Romes Lane 3: Mouse kidney Lane 4: Rat kidney Predicted band size: 86kDa Observed band size: 100kDa



Human kidney was stained with anti-CD10 rabbit antibody

杭州臻优品生物科技有限公司

热销产品:

蛋白、一抗、抗体对、ELISA试剂盒、生化试剂盒
CCK8试剂盒、QPCR检测试剂盒

检测服务:

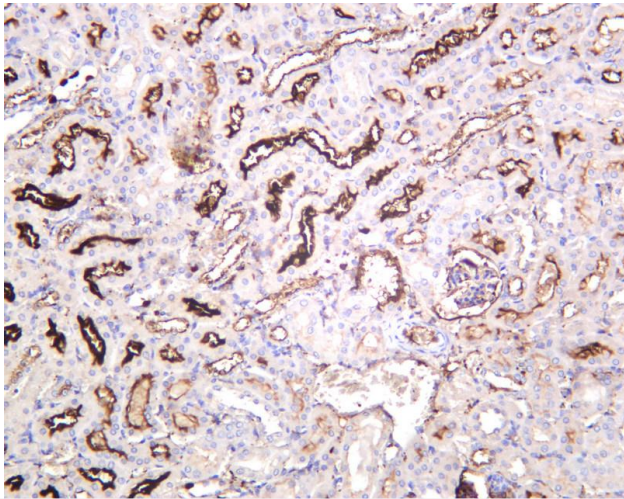
ELISA检测及定制服务 | 生化检测 | PCR、QPCR检测 | WB检测
ICO-IP检测 | 切片 | 染色 | 免疫组化 | 免疫荧光 | 透射电镜全套
| 宏基因组、转录组、基因组、蛋白组、代谢组测序



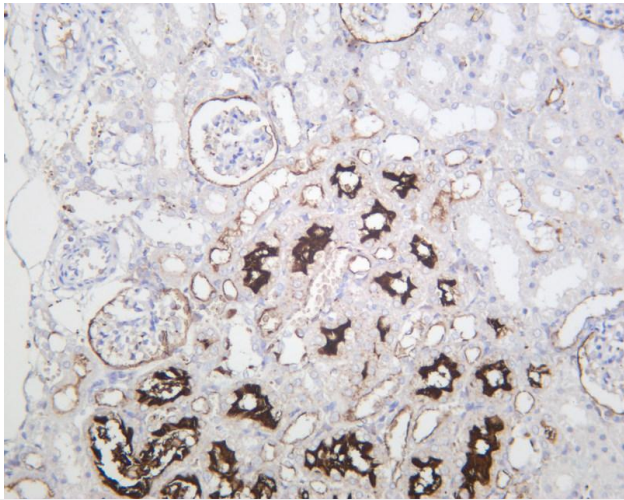
关注官网



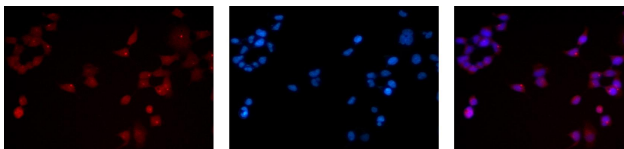
关注客服



Mouse kidney was stained with anti-CD10 rabbit antibody



Rat kidney was stained with anti-CD10 rabbit antibody



Immunofluorescence analysis of HEK293. Picture A: CD10 antibody (red). Picture B: DAPI (blue). Picture C: Merge of A+B

A

B

C

