



# ATP-Citrate Lyase Rabbit mAb

<b>Catalog No</b>	YP-rAb-17795
<b>Isotype</b>	IgG
<b>Reactivity</b>	Human,Mouse,Rat
<b>Applications</b>	WB,IHC,IF,IP,ELISA
<b>Gene Name</b>	ACLY
<b>Protein Name</b>	ATP-citrate synthase
<b>Purification Process</b>	Protein A
<b>Specificity</b>	Endogenous
<b>Formulation</b>	PBS, 50% glycerol, 0.05% Proclin 300, 0.05%BSA
<b>Source</b>	Monoclonal, Rabbit,IgG
<b>Dilution</b>	IHC 1:2000-1:10000; WB 1:2000-1:10000; IF 1:200-1:1000; ELISA 1:5000-1:20000; IP 1:50-1:200; Note: For IHC, we suggest antigen retrieval with TE buffer pH 9.0
<b>Concentration</b>	0.5 mg/ml
<b>Purity</b>	≥90%
<b>Storage Stability</b>	-15° C to -25° C/1 year(Do not lower than -25° C)
<b>Synonyms</b>	ACLY ; ATP-citrate synthase ; ATP-citrate ; pro-S-)-lyase ; ACL ; Citrate cleavage enzyme
<b>Observed Band</b>	121kD
<b>Calculated Molecular Weight</b>	121kD
<b>Cell Pathway</b>	Cytoplasm
<b>Tissue Specificity</b>	Brain,Epithelium,Hippocampus,Liver,Lymph,Platelet,
<b>Function</b>	Catalytic activity:ADP + phosphate + acetyl-CoA + oxaloacetate = ATP + citrate + CoA.,Function:ATP citrate-lyase is the primary enzyme responsible for the synthesis of cytosolic acetyl-CoA in many tissues. Has a central role in de novo lipid synthesis. In nervous tissue it may be involved in the biosynthesis of acetylcholine.,similarity:In the C-terminal section; belongs to the succinate/malate CoA ligase alpha subunit family.,similarity:In the N-terminal section; belongs to the succinate/malate CoA ligase beta subunit family.,subunit:Homotetramer.,
<b>Background</b>	ATP citrate lyase(ACLY) Homo sapiens ATP citrate lyase is the primary enzyme responsible for the synthesis of cytosolic acetyl-CoA in many tissues. The enzyme is a tetramer (relative molecular weight approximately 440,000) of apparently identical subunits. It catalyzes the formation of acetyl-CoA and oxaloacetate from

## 杭州臻优品生物科技有限公司

### 热销产品:

蛋白、一抗、抗体对、ELISA试剂盒、生化试剂盒  
CCK8试剂盒、QPCR检测试剂盒

### 检测服务:

ELISA检测及定制服务 | 生化检测 | PCR、QPCR检测 | WB检测  
ICO-IP检测 | 切片 | 染色 | 免疫组化 | 免疫荧光 | 透射电镜全套  
| 宏基因组、转录组、基因组、蛋白组、代谢组测序



关注官网



关注客服



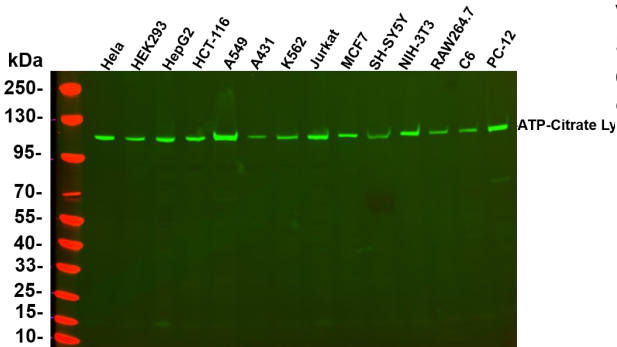
citrate and CoA with a concomitant hydrolysis of ATP to ADP and phosphate. The product, acetyl-CoA, serves several important biosynthetic pathways, including lipogenesis and cholesterologenesis. In nervous tissue, ATP citrate-lyase may be involved in the biosynthesis of acetylcholine. Multiple transcript variants encoding distinct isoforms have been identified for this gene. [provided by RefSeq, Dec 2014],

**matters needing attention**

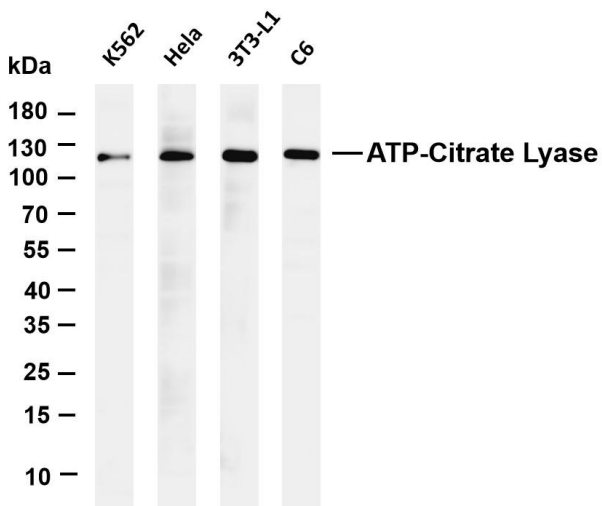
Avoid repeated freezing and thawing!

**Usage suggestions**

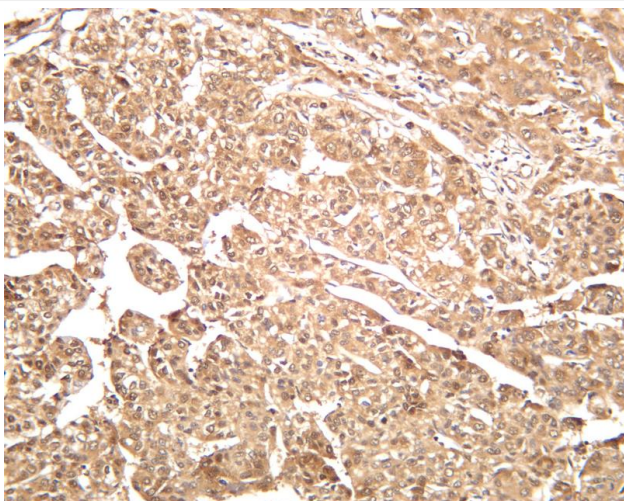
This product can be used in immunological reaction related experiments. For more information, please consult technical personnel.



Various whole cell lysates were separated by 4-20% SDS-PAGE, and the primary antibody was used at 4 °C, over night with a 1:5000 dilution. The Dylight 800-conjugated Goat anti-Rabbit antibody

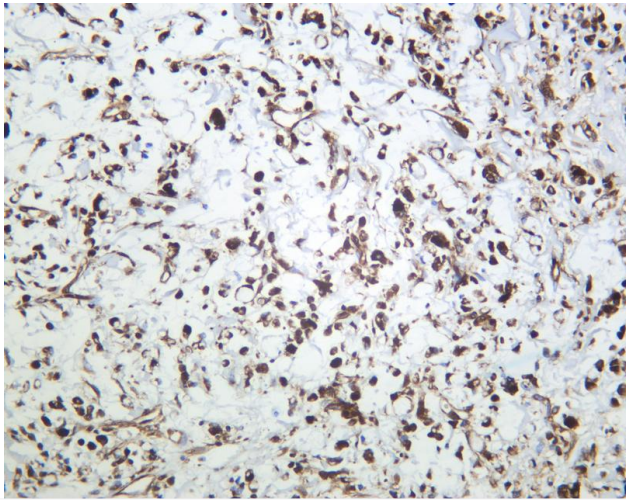


Various whole cell lysates were separated by 4-20% SDS-PAGE, and the membrane was blotted with anti-ATP-Citrate Lyase antibody. The HRP-conjugated Goat anti-Rabbit IgG(H + L) antibody was used to detect the antibody. Lane 1: K562 Lane 2: HeLa Lane 3: 3T3-L1 Lane 4: C6 Predicted band size: 121kDa Observed band size: 121kDa

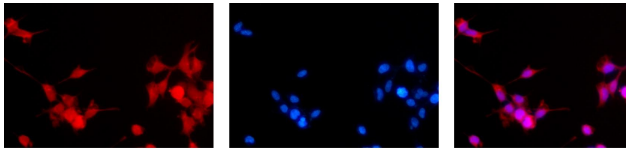


Human hepatocellular carcinoma was stained with anti-ATP-Citrate Lyase rabbit antibody





Human gastric carcinoma was stained with anti-ATP-Citrate Lyase Rabbit antibody



Immunofluorescence analysis of HEK293. Picture A: ATP-Citrate lyase antibody (red). Picture B: DAPI (blue). Picture C: Merge of A+B

A

B

C

