



p90RSK (phospho Ser380) Rabbit mAb

Catalog No	YP-rAb-17789
Isotype	IgG
Reactivity	Human,Mouse,Rat
Applications	WB,IHC,IF,IP,ELISA
Gene Name	RPS6KA1 MAPKAPK1A RSK1
Protein Name	Ribosomal protein S6 kinase alpha-1
Purification Process	Protein A
Specificity	This antibody detects endogenous levels of Rsk-1 only when phosphorylated at Ser380.This antibody does not recognize phosphorylated at other sites.
Formulation	PBS, 50% glycerol, 0.05% Proclin 300, 0.05%BSA
Source	Monoclonal, Rabbit,IgG
Dilution	IHC 1:2000-1:5000; WB 1:2000-1:10000; IF 1:200-1:1000; ELISA 1:5000-1:20000; IP 1:50-1:200; Note: For IHC, we suggest antigen retrieval with TE buffer pH 9.0
Concentration	0.5 mg/ml
Purity	≥90%
Storage Stability	-15° C to -25° C/1 year(Do not lower than -25° C)
Synonyms	RPS6KA1 ; MAPKAPK1A ; RSK1 ; Ribosomal protein S6 kinase alpha-1 ; S6K-alpha-1 ; 90 kDa ribosomal protein S6 kinase 1 ; p90-RSK 1 ; p90RSK1 ; p90S6K ; MAP kinase-activated protein kinase 1a ; MAPK-activated protein kinase 1a ; MAPKAP kinase 1a ; MAPKAP
Observed Band	83kD
Calculated Molecular Weight	83kD
Cell Pathway	Cytoplasm, Nucleus
Tissue Specificity	Colon,Epithelium,
Function	Catalytic activity:ATP + a protein = ADP + a phosphoprotein.,Caution:The sequence shown here is derived from an Ensembl automatic analysis pipeline and should be considered as preliminary data.,cofactor:Magnesium.,enzyme regulation:Activated by multiple phosphorylations on threonine and serine residues.,Function:Serine/threonine kinase that may play a role in mediating the growth-factor and stress induced activation of the transcription factor CREB.,PTM:Autophosphorylated on Ser-380, as part of the activation process.,similarity:Belongs to the protein kinase superfamily.,similarity:Belongs to





the protein kinase superfamily. AGC Ser/Thr protein kinase family. S6 kinase subfamily.,similarity:Contains 1 AGC-kinase C-terminal domain.,similarity:Contains 2 protein kinase domains.,subunit:Forms a complex with either ERK1 or ERK2 in quiescent cells. Transiently dissociates following mitogenic stimulation.,

Background

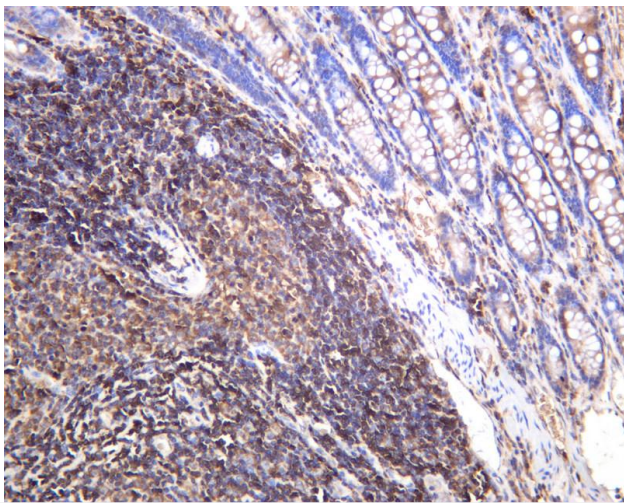
Ribosomal protein S6 kinase A1(RPS6KA1) Homo sapiens This gene encodes a member of the RSK (ribosomal S6 kinase) family of serine/threonine kinases. This kinase contains 2 nonidentical kinase catalytic domains and phosphorylates various substrates, including members of the mitogen-activated kinase (MAPK) signalling pathway. The activity of this protein has been implicated in controlling cell growth and differentiation. Alternate transcriptional splice variants, encoding different isoforms, have been characterized. [provided by RefSeq, Jul 2008],

matters needing attention

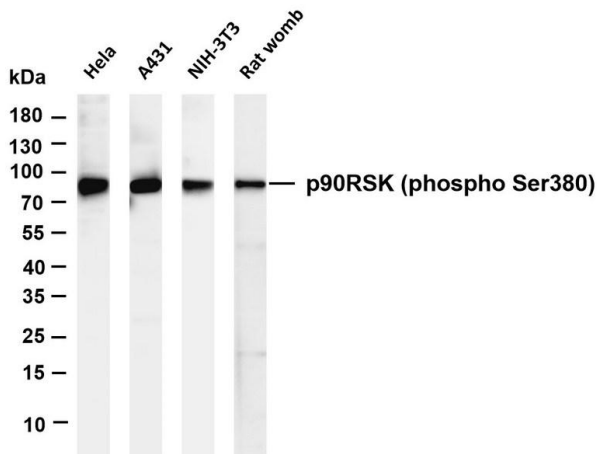
Avoid repeated freezing and thawing!

Usage suggestions

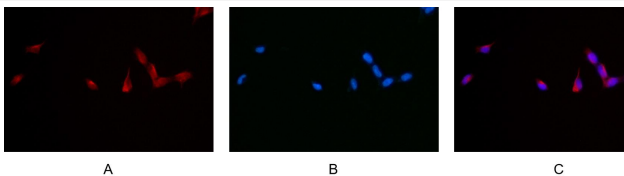
This product can be used in immunological reaction related experiments. For more information, please consult technical personnel.



Human colon carcinoma was stained with anti-p90

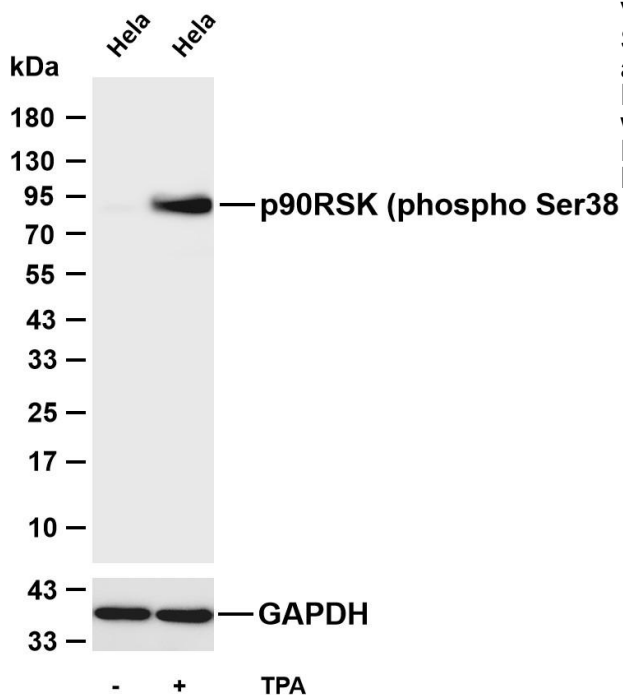


Various whole cell lysates were separated by 4-20% SDS-PAGE, and the membrane was blotted with anti-p90



Immunofluorescence analysis of HEK293. Picture A: p90





Various whole cell lysates were separated by 4-20% SDS-PAGE, and the membrane was blotted with anti-p90RSK (phospho Ser38) antibody. The HRP-conjugated Goat anti-Rabbit IgG (H + L) antibody was used to detect the antibody. Lane 1: HeLa Lane 2: HeLa was treated with TPA(200nM) for 30 minutes
Predicted band size: 83kDa Observed band size: 90kDa

