



VE-Cadherin Rabbit mAb

Catalog No	YP-rAb-17786
Isotype	IgG
Reactivity	Mouse,Rat
Applications	WB,IHC,IF,IP,ELISA
Gene Name	CDH5
Protein Name	Cadherin-5
Purification Process	Protein A
Specificity	Endogenous
Formulation	PBS, 50% glycerol, 0.05% Proclin 300, 0.05%BSA
Source	Monoclonal, Rabbit,IgG
Dilution	IHC 1:200-1:1000; WB 1:2000-1:10000; IF 1:200-1:1000; ELISA 1:5000-1:20000; IP 1:50-1:200; Note: For IHC, we suggest antigen retrieval with TE buffer pH 9.0
Concentration	0.5 mg/ml
Purity	≥90%
Storage Stability	-15° C to -25° C/1 year(Do not lower than -25° C)
Synonyms	CDH5 ; Cadherin-5 ; 7B4 antigen ; Vascular endothelial cadherin ; VE-cadherin ; CD antigen CD144
Observed Band	90-140kD
Calculated Molecular Weight	88kD
Cell Pathway	Membrane
Tissue Specificity	Endothelial tissues and brain.
Function	Cadherins are calcium dependent cell adhesion proteins.,Cadherins are calcium dependent cell adhesion proteins. They preferentially interact with themselves in a homophilic manner in connecting cells; cadherins may thus contribute to the sorting of heterogeneous cell types. This cadherin may play a important role in endothelial cell biology through control of the cohesion and organization of the intercellular junctions. It associates with alpha-catenin forming a link to the cytoskeleton.,similarity:Contains 5 cadherin domains.,subcellular location:Found at cell-cell boundaries and probably at cell-matrix boundaries.,tissue specificity:Endothelial tissues and brain.,
Background	This gene encodes a classical cadherin of the cadherin superfamily. The encoded preproprotein is proteolytically processed to generate the mature glycoprotein. This calcium-dependent cell-cell adhesion molecule is comprised of five

杭州臻优品生物科技有限公司

热销产品:

蛋白、一抗、抗体对、ELISA试剂盒、生化试剂盒
CCK8试剂盒、QPCR检测试剂盒

检测服务:

ELISA检测及定制服务 | 生化检测 | PCR、QPCR检测 | WB检测
ICO-IP检测 | 切片 | 染色 | 免疫组化 | 免疫荧光 | 透射电镜全套
| 宏基因组、转录组、基因组、蛋白组、代谢组测序



关注官网



关注客服



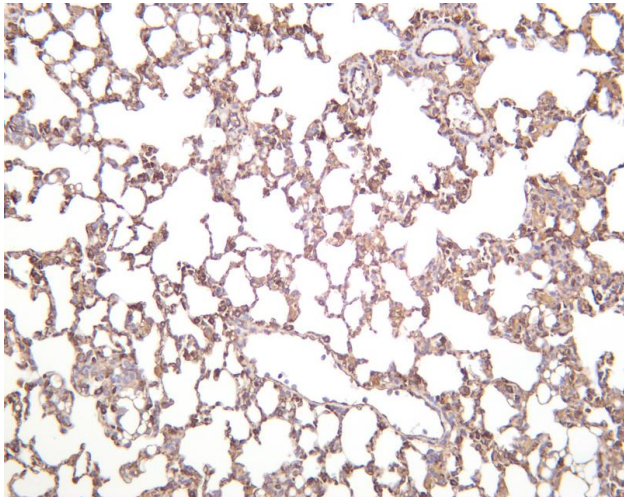
extracellular cadherin repeats, a transmembrane region and a highly conserved cytoplasmic tail. Functioning as a classical cadherin by imparting to cells the ability to adhere in a homophilic manner, this protein plays a role in endothelial adherens junction assembly and maintenance. This gene is located in a gene cluster in a region on the long arm of chromosome 16 that is involved in loss of heterozygosity events in breast and prostate cancer. [provided by RefSeq, Nov 2015],

matters needing attention

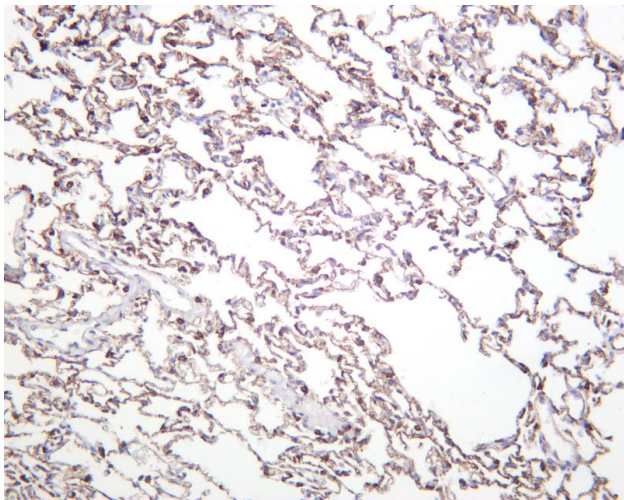
Avoid repeated freezing and thawing!

Usage suggestions

This product can be used in immunological reaction related experiments. For more information, please consult technical personnel.



Mouse lung was stained with anti-VE Cadherin rabbit antibody



Rat lung was stained with anti-VE Cadherin rabbit antibody

杭州臻优品生物科技有限公司

热销产品:

蛋白、一抗、抗体对、ELISA试剂盒、生化试剂盒
CCK8试剂盒、QPCR检测试剂盒

检测服务:

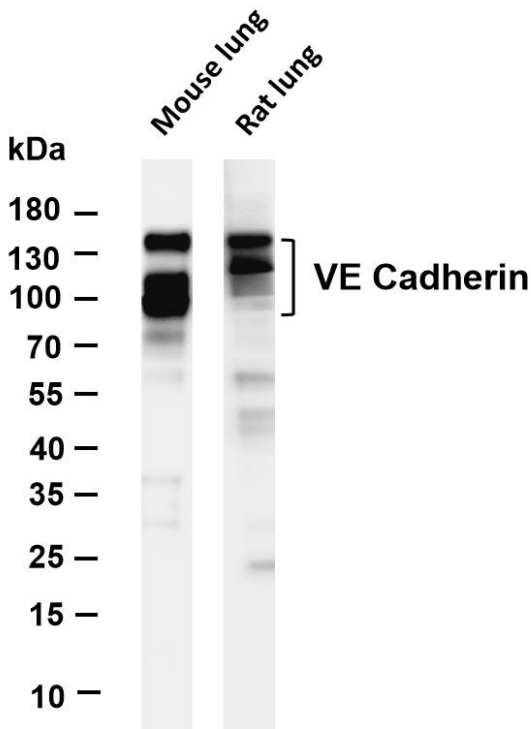
ELISA检测及定制服务 | 生化检测 | PCR、QPCR检测 | WB检测
ICO-IP检测 | 切片 | 染色 | 免疫组化 | 免疫荧光 | 透射电镜全套
| 宏基因组、转录组、基因组、蛋白组、代谢组测序



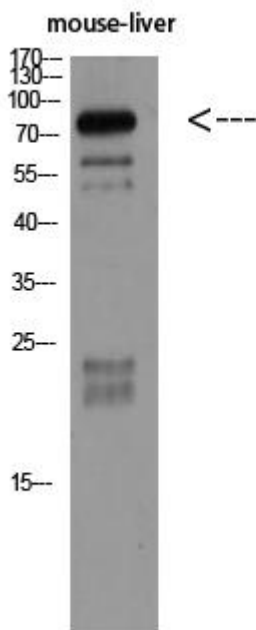
关注官网



关注客服

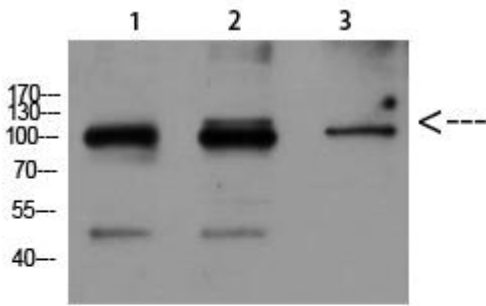


Various whole cell lysates were separated by 4-20% SDS-PAGE, and the membrane was blotted with anti-VE Cadherin antibody. The HRP-conjugated Goat anti-Rabbit IgG(H + L) antibody was used to detect the antibody. Lane 1: Mouse lung Lane 2: Rat lung Predicted band size: 88kDa Observed band size: 90-140kDa



Western Blot analysis of mouse-liver using VE-Cadherin Antibody diluted at 1:500. Secondary antibody(catalog#:RS0002) was diluted at 1:20000





1 mouse-lung
2 mouse-kidney
3 mouse-heart

Western Blot analysis of mouse-lung mouse-kidney mouse-heart using VE-Cadherin Antibody diluted at 1:500. Secondary antibody(catalog#:RS0002) was diluted at 1:20000

