



SLUG Rabbit mAb

Catalog No	YP-rAb-17784
Isotype	IgG
Reactivity	Human,Mouse
Applications	WB,IF,IP,ELISA
Gene Name	SNAI2 SLUG SLUGH
Protein Name	Zinc finger protein SNAI2
Purification Process	Protein A
Specificity	Endogenous
Formulation	PBS, 50% glycerol, 0.05% Proclin 300, 0.05%BSA
Source	Monoclonal, Rabbit,IgG
Dilution	WB 1:500-1:2000; IF 1:200-1:1000; ELISA 1:5000-1:20000; IP 1:50-1:200;
Concentration	0.5 mg/ml
Purity	≥90%
Storage Stability	-15° C to -25° C/1 year(Do not lower than -25° C)
Synonyms	SNAI2 ; SLUG ; SLUGH ; Zinc finger protein SNAI2 ; Neural crest transcription factor Slug ; Protein snail homolog 2
Observed Band	36kD
Calculated Molecular Weight	30kD
Cell Pathway	Cytoplasm, Nucleus
Tissue Specificity	Expressed in most adult human tissues, including spleen, thymus, prostate, testis, ovary, small intestine, colon, heart, brain, placenta, lung, liver, skeletal muscle, kidney and pancreas. Not detected in peripheral blood leukocyte. Expressed in the dermis and in all layers of the epidermis, with high levels of expression in the basal layers (at protein level). Expressed in osteoblasts (at protein level). Expressed in mesenchymal stem cells (at protein level). Expressed in breast tumor cells (at protein level).
Function	Disease:Defects in SNAI2 are a cause of neural tube defects (NTD).,disease:Defects in SNAI2 are the cause of Waardenburg syndrome type 2D (WS2D) [MIM:608890]. WS2 is a genetically heterogeneous, autosomal dominant disorder characterized by sensorineural deafness, pigmentary disturbances, and absence of dystopia canthorum. The frequency of deafness is higher in WS2 than in WS1.,Function:Transcriptional repressor. Involved in the generation and migration of neural crest cells.,similarity:Belongs to the snail





C2H2-type zinc-finger protein family.,similarity:Contains 5 C2H2-type zinc fingers.,tissue specificity:Expressed in placenta and adult heart, pancreas, liver, kidney and skeletal muscle.,

Background

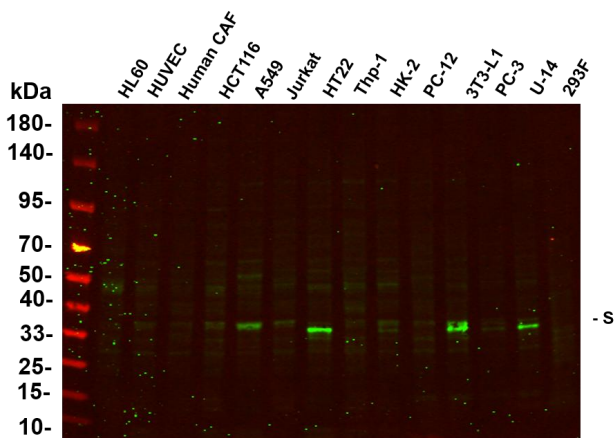
Snail family transcriptional repressor 2(SNAI2) Homo sapiens This gene encodes a member of the Snail family of C2H2-type zinc finger transcription factors. The encoded protein acts as a transcriptional repressor that binds to E-box motifs and is also likely to repress E-cadherin transcription in breast carcinoma. This protein is involved in epithelial-mesenchymal transitions and has antiapoptotic activity. Mutations in this gene may be associated with sporadic cases of neural tube defects. [provided by RefSeq, Jul 2008],

matters needing attention

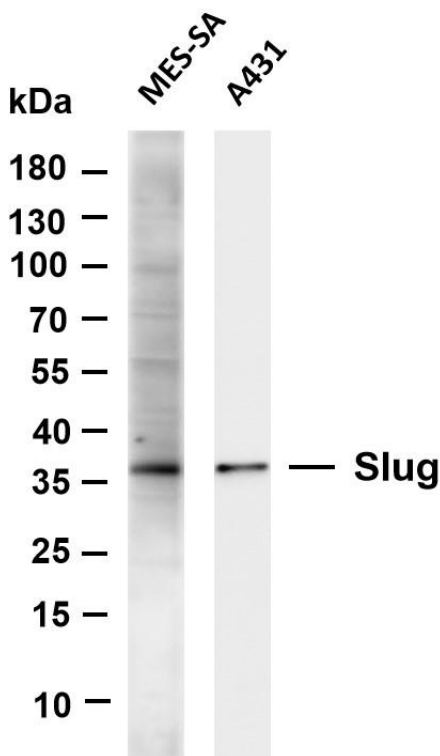
Avoid repeated freezing and thawing!

Usage suggestions

This product can be used in immunological reaction related experiments. For more information, please consult technical personnel.

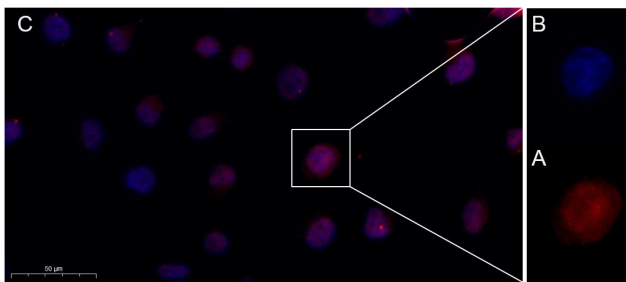


Various whole cell lysates were separated by 4-20% SDS-PAGE, and the primary antibody was used at 4°C, over night with a 1:800 dilution. The Dylight 800-conjugated Goat anti-Rabbit antibody



Various whole cell lysates were separated by 4-20% SDS-PAGE, and the membrane was blotted with anti-Slug antibody. The HRP-conjugated Goat anti-Rabbit IgG(H + L) antibody was used to detect the antibody. Lane 1: MES-SA Lane 2: A431 Predicted band size: 30kDa Observed band size: 36kDa





Immunofluorescence analysis of HeLa. Picture A: Slug Rabbit mAb (red). Picture B: DAPI (blue). Picture C: Merge of A+B

杭州臻优品生物科技有限公司

热销产品:

蛋白、一抗、抗体对、ELISA试剂盒、生化试剂盒
CCK8试剂盒、QPCR检测试剂盒

检测服务:

ELISA检测及定制服务 | 生化检测 | PCR、QPCR检测 | WB检测
ICO-IP检测 | 切片 | 染色 | 免疫组化 | 免疫荧光 | 透射电镜全套
| 宏基因组、转录组、基因组、蛋白组、代谢组测序



关注官网



关注客服