



Cathepsin S Rabbit mAb

Catalog No	YP-rAb-17778
Isotype	IgG
Reactivity	Human
Applications	WB,IHC,IF,ELISA
Gene Name	CTSS
Protein Name	Cathepsin S (EC 3.4.22.27)
Purification Process	Protein A
Specificity	Endogenous
Formulation	PBS, 50% glycerol, 0.05% Proclin 300, 0.05%BSA
Source	Monoclonal, Rabbit,IgG
Dilution	IHC 1:200-1:1000; WB 1:2000-1:10000; IF 1:200-1:1000; ELISA 1:5000-1:20000; Note: For IHC, we suggest antigen retrieval with TE buffer pH 9.0
Concentration	0.5 mg/ml
Purity	≥90%
Storage Stability	-15° C to -25° C/1 year(Do not lower than -25° C)
Synonyms	
Observed Band	25kD
Calculated Molecular Weight	38kD
Cell Pathway	Lysosome . Secreted . Cytoplasmic vesicle, phagosome .
Tissue Specificity	Alveolar macrophage,Pancreas,Testis,
Function	Catalytic activity:Similar to cathepsin L, but with much less activity on Z-Phe-Arg- -NHMeC, and more activity on the Z-Val-Val-Arg- -Xaa compound.,Function:Thiol protease. Key protease responsible for the removal of the invariant chain from MHC class II molecules. The bond-specificity of this proteinase is in part similar to the specificities of cathepsin L and cathepsin N.,similarity:Belongs to the peptidase C1 family.,subunit:Monomer.,
Background	The protein encoded by this gene, a member of the peptidase C1 family, is a lysosomal cysteine proteinase that may participate in the degradation of antigenic proteins to peptides for presentation on MHC class II molecules. The encoded protein can function as an elastase over a broad pH range in alveolar macrophages. Alternatively spliced transcript variants encoding distinct isoforms have been found for this gene. [provided by RefSeq, Dec 2010],



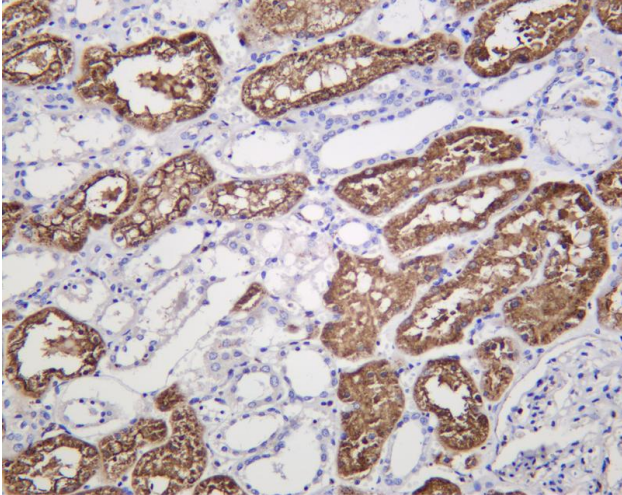


matters needing attention

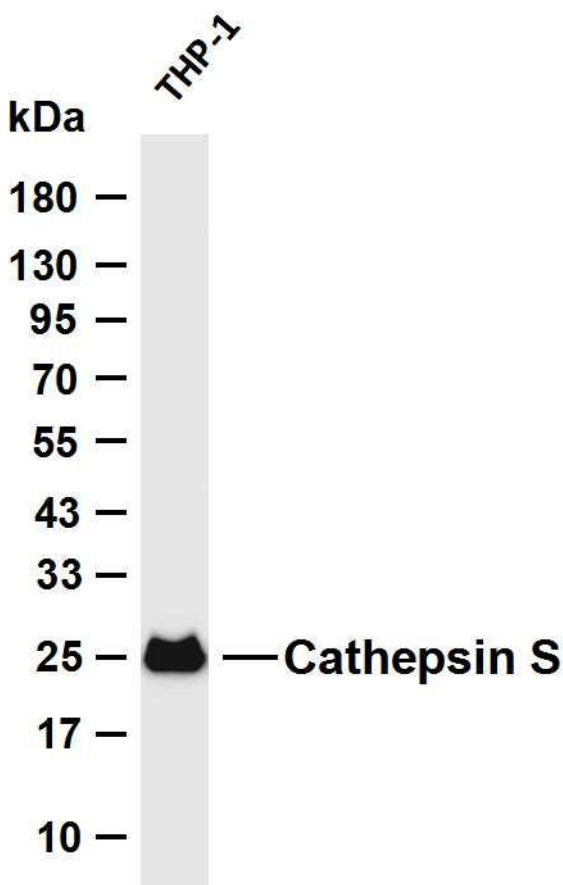
Avoid repeated freezing and thawing!

Usage suggestions

This product can be used in immunological reaction related experiments. For more information, please consult technical personnel.



Human kidney was stained with anti-Cathepsin S Rabbit antibody



Various whole cell lysates were separated by 4-20% SDS-PAGE, and the membrane was blotted with anti-Cathepsin S antibody. The HRP-conjugated Goat anti-Rabbit IgG (H + L) antibody was used to detect the antibody. Lane 1: THP-1 Predicted band size: 38kDa Observed band size: 25kDa

