



RPA70 Rabbit mAb

Catalog No	YP-rAb-17760
Isotype	IgG
Reactivity	Human,Rat
Applications	WB,IHC,IF,IP,ELISA
Gene Name	RPA1 REPA1 RPA70
Protein Name	Replication protein A 70 kDa DNA-binding subunit
Purification Process	Protein A
Specificity	Endogenous
Formulation	PBS, 50% glycerol, 0.05% Proclin 300, 0.05%BSA
Source	Monoclonal, Rabbit,IgG
Dilution	IHC 1:200-1:1000; WB 1:2000-1:10000; IF 1:200-1:1000; ELISA 1:5000-1:20000; IP 1:50-1:200; Note: For IHC, we suggest antigen retrieval with TE buffer pH 9.0
Concentration	0.5 mg/ml
Purity	≥90%
Storage Stability	-15° C to -25° C/1 year(Do not lower than -25° C)
Synonyms	Replication protein A 70 kDa DNA-binding subunit ; RP-A p70 ; Replication factor A protein 1 ; RF-A protein 1 ; Single-stranded DNA-binding protein ;
Observed Band	68kD
Calculated Molecular Weight	68kD
Cell Pathway	Nucleus . Nucleus, PML body . Enriched in PML bodies in cells displaying alternative lengthening of their telomeres. .
Tissue Specificity	
Function	It participates in a very early step in initiation. RP-A is a single-stranded DNA-binding protein. Absolutely required for simian virus 40 DNA replication in vitro.,PTM:Phosphorylated upon DNA damage, probably by ATM or ATR.,similarity:Belongs to the replication factor A protein 1 family.,subunit:Heterotrimer of 70, 32 and 14 kDa chains. The DNA-binding activity may reside exclusively on the 70 kDa subunit. Interacts with RIP and XPA. Interacts with RPA4.,
Background	function:It participates in a very early step in initiation. RP-A is a single-stranded DNA-binding protein. Absolutely required for simian virus 40 DNA replication in vitro.,PTM:Phosphorylated upon DNA damage, probably by ATM or ATR.,similarity:Belongs to the replication factor A protein 1





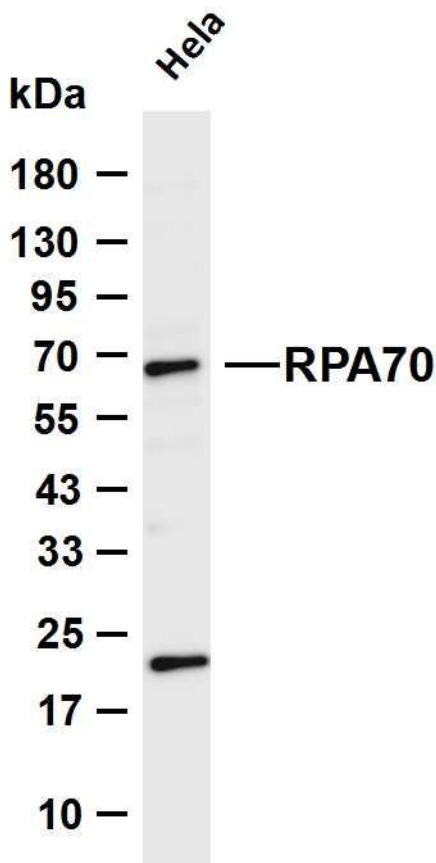
family.,subunit:Heterotrimer of 70, 32 and 14 kDa chains. The DNA-binding activity may reside exclusively on the 70 kDa subunit. Interacts with RIP and XPA. Interacts with RPA4.,

matters needing attention

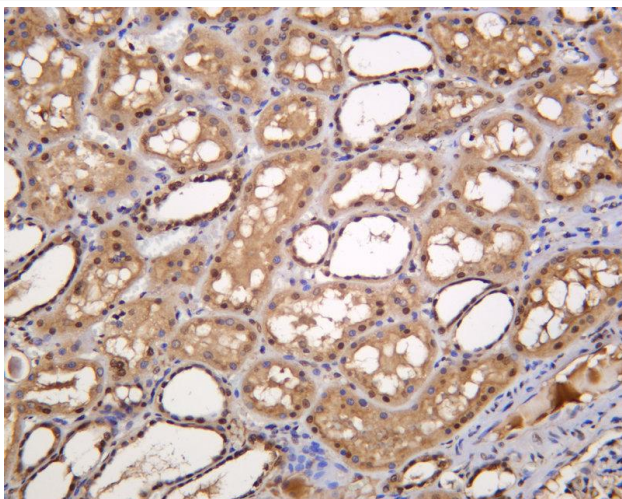
Avoid repeated freezing and thawing!

Usage suggestions

This product can be used in immunological reaction related experiments. For more information, please consult technical personnel.



Various whole cell lysates were separated by 4-20% SDS-PAGE, and the membrane was blotted with anti-RPA70 antibody. The HRP-conjugated Goat anti-Rabbit IgG (H + L) antibody was used to detect the antibody. Lane 1: HeLa Predicted band size: 68kDa Observed band size: 68kDa



Human kidney was stained with anti-RPA70 Rabbit pAb Rabbit antibody

杭州臻优品生物科技有限公司

热销产品:

蛋白、一抗、抗体对、ELISA试剂盒、生化试剂盒
CCK8试剂盒、QPCR检测试剂盒

检测服务:

ELISA检测及定制服务 | 生化检测 | PCR、QPCR检测 | WB检测
ICO-IP检测 | 切片 | 染色 | 免疫组化 | 免疫荧光 | 透射电镜全套
| 宏基因组、转录组、基因组、蛋白组、代谢组测序



关注官网



关注客服