



# Bak Rabbit mAb

<b>Catalog No</b>	YP-rAb-17758
<b>Isotype</b>	IgG
<b>Reactivity</b>	Human,Mouse,Rat
<b>Applications</b>	WB,IHC,IF,IP,ELISA
<b>Gene Name</b>	BAK1
<b>Protein Name</b>	Bcl-2 homologous antagonist/killer
<b>Purification Process</b>	Protein A
<b>Specificity</b>	Endogenous
<b>Formulation</b>	PBS, 50% glycerol, 0.05% Proclin 300, 0.05%BSA
<b>Source</b>	Monoclonal, Rabbit,IgG
<b>Dilution</b>	IHC 1:200-1:1000; WB 1:2000-1:10000; IF 1:200-1:1000; ELISA 1:5000-1:20000; IP 1:50-1:200; Note: For IHC, we suggest antigen retrieval with TE buffer pH 9.0
<b>Concentration</b>	0.5 mg/ml
<b>Purity</b>	≥90%
<b>Storage Stability</b>	-15° C to -25° C/1 year(Do not lower than -25° C)
<b>Synonyms</b>	BAK1 ; BAK ; BCL2L7 ; CDN1 ; Bcl-2 homologous antagonist/killer ; Apoptosis regulator BAK ; Bcl-2-like protein 7 ; Bcl2-L-7
<b>Observed Band</b>	23kD
<b>Calculated Molecular Weight</b>	23kD
<b>Cell Pathway</b>	Mitochondrion outer membrane
<b>Tissue Specificity</b>	Expressed in a wide variety of tissues, with highest levels in the heart and skeletal muscle.
<b>Function</b>	Caution:Could be the product of a pseudogene.,domain:Intact BH3 domain is required by BIK, BID, BAK, BAD and BAX for their pro-apoptotic activity and for their interaction with anti-apoptotic members of the Bcl-2 family. Apoptotic members of the Bcl-2 family.,domain:Intact BH3 motif is required by BIK, BID, BAK, BAD and BAX for their pro-apoptotic activity and for their interaction with anti-apoptotic members of the Bcl-2 family.,Function:In the presence of an appropriate stimulus, accelerates programmed cell death by binding to, and antagonizing the a repressor Bcl-2 or its adenovirus homolog E1B 19k protein.,Function:In the presence of an appropriate stimulus, accelerates programmed cell death by binding to, and antagonizing the a. repressor BCL2 or its adenovirus homolog E1B 19k protein. Low micromolar levels of zinc ions inhibit the promotion of apoptosis.,similarity:Belongs to the Bcl-2 family.,subunit:Forms





heterodimers with Bcl-2, E1B 19k protein, and Bcl-X(L).,subunit:Interacts with BCL2A1 (By similarity). Homodimer. Formation of the homodimer is zinc-dependent. Forms heterodimers with BCL2, E1B 19k protein, and BCL2L1 isoform Bcl-X(L).,tissue specificity:Expressed in a wide variety of tissues, with highest levels in the heart and skeletal muscle.,

### Background

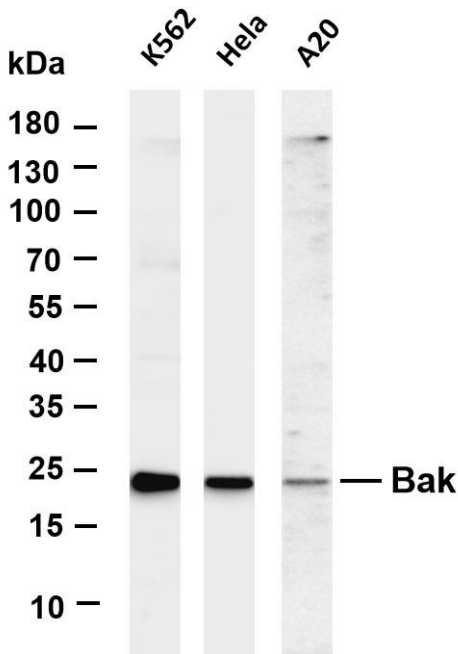
The protein encoded by this gene belongs to the BCL2 protein family. BCL2 family members form oligomers or heterodimers and act as anti- or pro-apoptotic regulators that are involved in a wide variety of cellular activities. This protein localizes to mitochondria, and functions to induce apoptosis. It interacts with and accelerates the opening of the mitochondrial voltage-dependent anion channel, which leads to a loss in membrane potential and the release of cytochrome c. This protein also interacts with the tumor suppressor P53 after exposure to cell stress. [provided by RefSeq, Jul 2008],

### matters needing attention

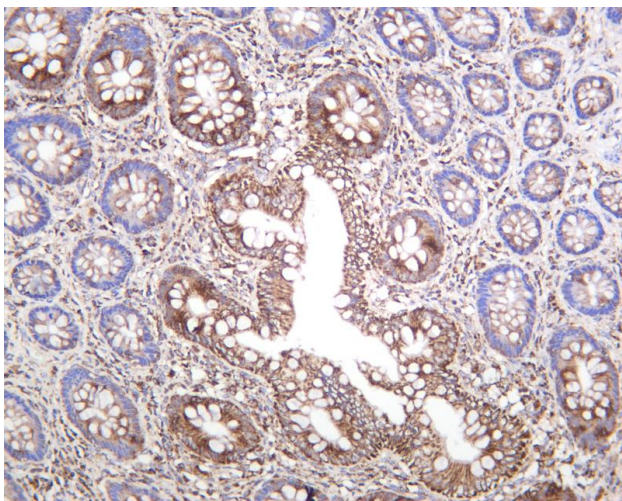
Avoid repeated freezing and thawing!

### Usage suggestions

This product can be used in immunological reaction related experiments. For more information, please consult technical personnel.



Various whole cell lysates were separated by 4-20% SDS-PAGE, and the membrane was blotted with anti-Bak antibody. The HRP-conjugated Goat anti-Rabbit IgG(H + L) antibody was used to detect the antibody. Lane 1: K562 Lane 2: HeLa Lane 3: A20 Predicted band size: 23kDa Observed band size: 23kDa



Human colon was stained with anti-Bak rabbit antibody

## 杭州臻优品生物科技有限公司

### 热销产品:

蛋白、一抗、抗体对、ELISA试剂盒、生化试剂盒  
CCK8试剂盒、QPCR检测试剂盒

### 检测服务:

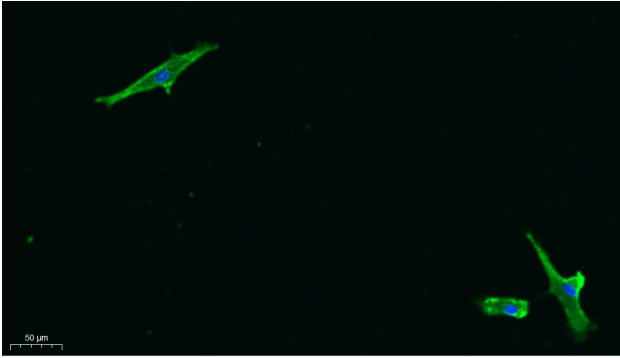
ELISA检测及定制服务 | 生化检测 | PCR、QPCR检测 | WB检测  
ICO-IP检测 | 切片 | 染色 | 免疫组化 | 免疫荧光 | 透射电镜全套  
| 宏基因组、转录组、基因组、蛋白组、代谢组测序



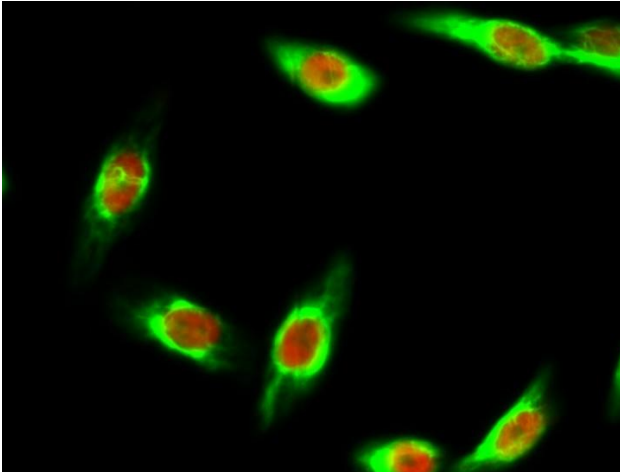
关注官网



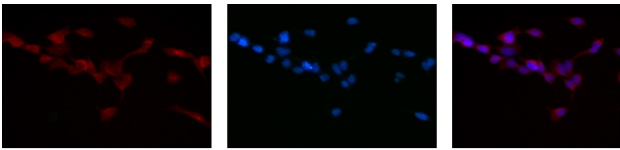
关注客服



Immunofluorescence analysis of A549. 1,primary Antibody was diluted at 1:200(4°C overnight). 2, Goat Anti Rabbit IgG (H&L) - Alexa Fluor 488 Secondary antibody was diluted at 1:1000(room temperature, 50min).3, DAPI(blue) 10min.



Immunofluorescence analysis of HeLa cell. 1,Bak Antibody(green) was diluted at 1:200(4° overnight). (red) was diluted at 1:200(4° overnight). 2, Goat Anti Rabbit Alexa Fluor 488 Catalog:RS3211 was diluted at 1:1000(room temperature, 50min). Goat Anti Mouse Alexa Fluor 594 Catalog:RS3608 was diluted at 1:1000(room temperature, 50min).



Immunofluorescence analysis of HEK293. Picture A: Bak antibody (red). Picture B: DAPI (blue). Picture C: Merge of A+B

A

B

C

## 杭州臻优品生物科技有限公司

### 热销产品:

蛋白、一抗、抗体对、ELISA试剂盒、生化试剂盒  
CCK8试剂盒、QPCR检测试剂盒

### 检测服务:

ELISA检测及定制服务 | 生化检测 | PCR、QPCR检测 | WB检测  
ICO-IP检测 | 切片 | 染色 | 免疫组化 | 免疫荧光 | 透射电镜全套  
| 宏基因组、转录组、基因组、蛋白组、代谢组测序



关注官网



关注客服