



# CD206/MRC1 Rabbit mAb

<b>Catalog No</b>	YP-rAb-17755
<b>Isotype</b>	IgG
<b>Reactivity</b>	Human,Mouse,Rat
<b>Applications</b>	WB,IHC,IF,IP,ELISA
<b>Gene Name</b>	MRC1
<b>Protein Name</b>	Macrophage mannose receptor 1
<b>Purification Process</b>	Protein A
<b>Specificity</b>	Endogenous
<b>Formulation</b>	PBS, 50% glycerol, 0.05% Proclin 300, 0.05%BSA
<b>Source</b>	Monoclonal, Rabbit,IgG
<b>Dilution</b>	IHC 1:200-1:1000; WB 1:5000-1:20000; IF 1:200-1:1000; ELISA 1:5000-1:20000; IP 1:50-1:200; Note: For IHC, we suggest antigen retrieval with TE buffer pH 9.0
<b>Concentration</b>	0.5 mg/ml
<b>Purity</b>	≥90%
<b>Storage Stability</b>	-15° C to -25° C/1 year(Do not lower than -25° C)
<b>Synonyms</b>	MRC1 ; CLEC13D ; CLEC13DL ; MRC1L1 ; Macrophage mannose receptor 1 ; MMR ; C-type lectin domain family 13 member D ; C-type lectin domain family 13 member D-like ; Macrophage mannose receptor 1-like protein 1 ; CD206
<b>Observed Band</b>	190kD
<b>Calculated Molecular Weight</b>	166kD
<b>Cell Pathway</b>	Membrane
<b>Tissue Specificity</b>	Milk,Placenta,Testis,
<b>Function</b>	Mediates the endocytosis of glycoproteins by macrophages. Binds both sulfated and non-sulfated polysaccharide chains. Acts as phagocytic receptor for bacteria, fungi and other pathogens.,miscellaneous:CRDs 1-3 have at most very weak affinity for carbohydrate. CRD 4 shows the highest affinity binding and has multispecificity for a variety of monosaccharides. At least 3 CRDs (4, 5, and 7) are required for high affinity binding and endocytosis of multivalent glycoconjugates.,online information:Macrophage mannose receptor,similarity:Contains 1 fibronectin type-II domain.,similarity:Contains 1 ricin B-type lectin domain.,similarity:Contains 8 C-type lectin domains.,





## Background

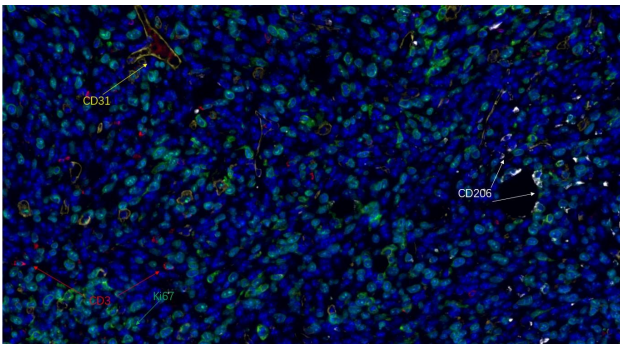
The recognition of complex carbohydrate structures on glycoproteins is an important part of several biological processes, including cell-cell recognition, serum glycoprotein turnover, and neutralization of pathogens. The protein encoded by this gene is a type I membrane receptor that mediates the endocytosis of glycoproteins by macrophages. The protein has been shown to bind high-mannose structures on the surface of potentially pathogenic viruses, bacteria, and fungi so that they can be neutralized by phagocytic engulfment.[provided by RefSeq, Sep 2015],

## matters needing attention

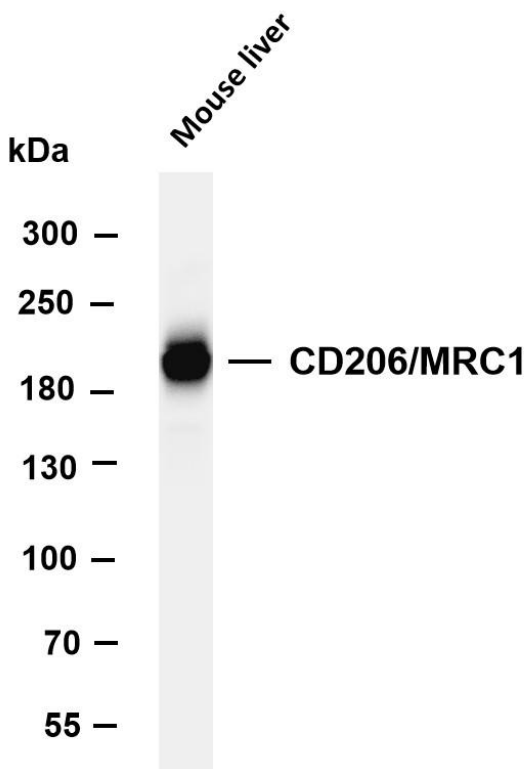
Avoid repeated freezing and thawing!

## Usage suggestions

This product can be used in immunological reaction related experiments. For more information, please consult technical personnel.

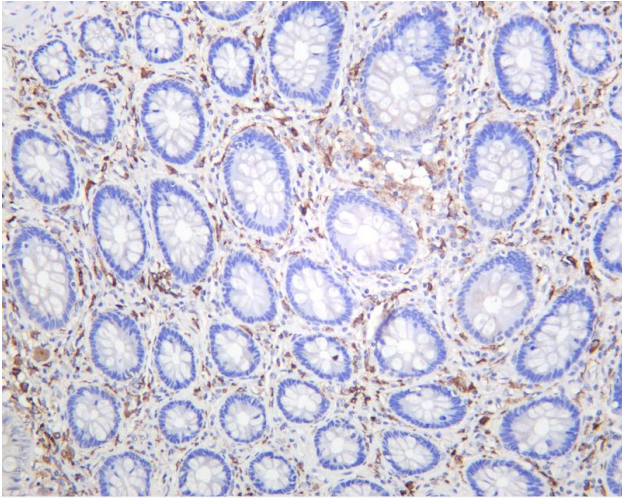


Fluorescence multiplex immunohistochemical analysis of human tonsil tissue (formalin-fixed paraffin-embedded section). The immunostaining was performed by Sextuple-Fluorescence kit (

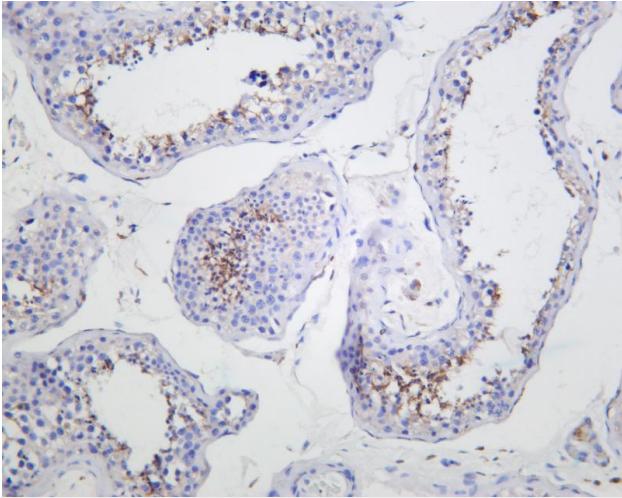


Various whole cell lysates were separated by 4-8% SDS-PAGE, and the membrane was blotted with anti-CD206/MRC1 antibody. The HRP-conjugated Goat anti-Rabbit IgG(H + L) antibody was used to detect the antibody. Lane 1: Mouse liver Predicted band size: 190kDa Observed band size: 190kDa

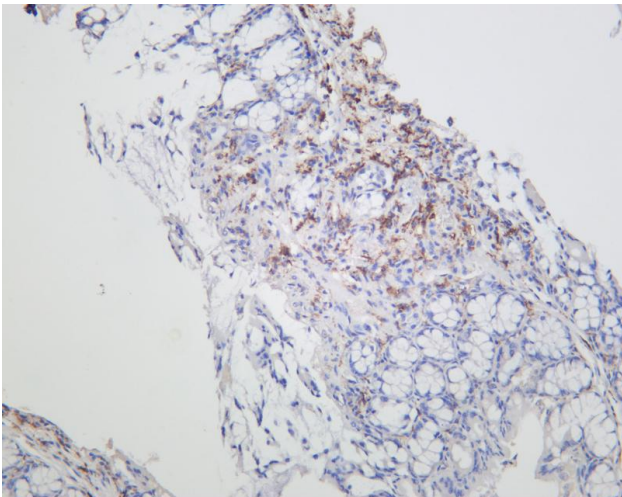




Human colon was stained with anti-CD206/MRC1 rabbit antibody



Human testis was stained with anti-CD206/MRC1 rabbit antibody



Mouse colon was stained with anti-CD206/MRC1 rabbit antibody

## 杭州臻优品生物科技有限公司

### 热销产品:

蛋白、一抗、抗体对、ELISA试剂盒、生化试剂盒  
CCK8试剂盒、QPCR检测试剂盒

### 检测服务:

ELISA检测及定制服务 | 生化检测 | PCR、QPCR检测 | WB检测  
ICO-IP检测 | 切片 | 染色 | 免疫组化 | 免疫荧光 | 透射电镜全套  
| 宏基因组、转录组、基因组、蛋白质组、代谢组测序



关注官网



关注客服