



# HRAS Rabbit mAb

<b>Catalog No</b>	YP-rAb-17750
<b>Isotype</b>	IgG
<b>Reactivity</b>	Human,Mouse,Rat
<b>Applications</b>	WB,IHC,IF,IP,ELISA
<b>Gene Name</b>	HRAS,HRAS1
<b>Protein Name</b>	GTPase,H-Ras-1,Ha-Ras,Transforming protein p21, ,c-H-ras, p21ras, Cleaved into: GTPase HRas N-terminally processed,Cleaved into: GTPase Hras,GTPase Hras,HRAS 1,
<b>Purification Process</b>	Protein A
<b>Specificity</b>	Endogenous
<b>Formulation</b>	PBS, 50% glycerol, 0.05% Proclin 300, 0.05%BSA
<b>Source</b>	Monoclonal, Rabbit,IgG
<b>Dilution</b>	IHC 1:200-1:1000; WB 1:2000-1:10000; IF 1:200-1:1000; ELISA 1:5000-1:20000; IP 1:50-1:200; Note: For IHC, we suggest antigen retrieval with TE buffer pH 9.0
<b>Concentration</b>	0.5 mg/ml
<b>Purity</b>	≥90%
<b>Storage Stability</b>	-15° C to -25° C/1 year(Do not lower than -25° C)
<b>Synonyms</b>	HRAS,HRAS1,GTPase,H-Ras-1,Ha-Ras,Transforming protein p21, ,c-H-ras, p21ras, Cleaved into: GTPase HRas N-terminally processed,Cleaved into: GTPase Hras,GTPase Hras,HRAS 1,
<b>Observed Band</b>	21kD
<b>Calculated Molecular Weight</b>	21kD
<b>Cell Pathway</b>	Cytoplasm, Membrane
<b>Tissue Specificity</b>	Widely expressed. {ECO:0000269 PubMed:14500341}.
<b>Function</b>	Involved in the activation of Ras protein signal transduction ,PubMed:22821884,. Ras proteins bind GDP/GTP and possess intrinsic GTPase activity
<b>Background</b>	This gene belongs to the Ras oncogene family, whose members are related to the transforming genes of mammalian sarcoma retroviruses. The products encoded by these genes function in signal transduction pathways. These proteins can bind GTP and GDP, and they have intrinsic GTPase activity. This protein undergoes a continuous cycle of de- and re-palmitoylation, which regulates its rapid exchange between the plasma membrane and the Golgi apparatus. Mutations in this gene cause Costello syndrome, a disease characterized by increased growth at the





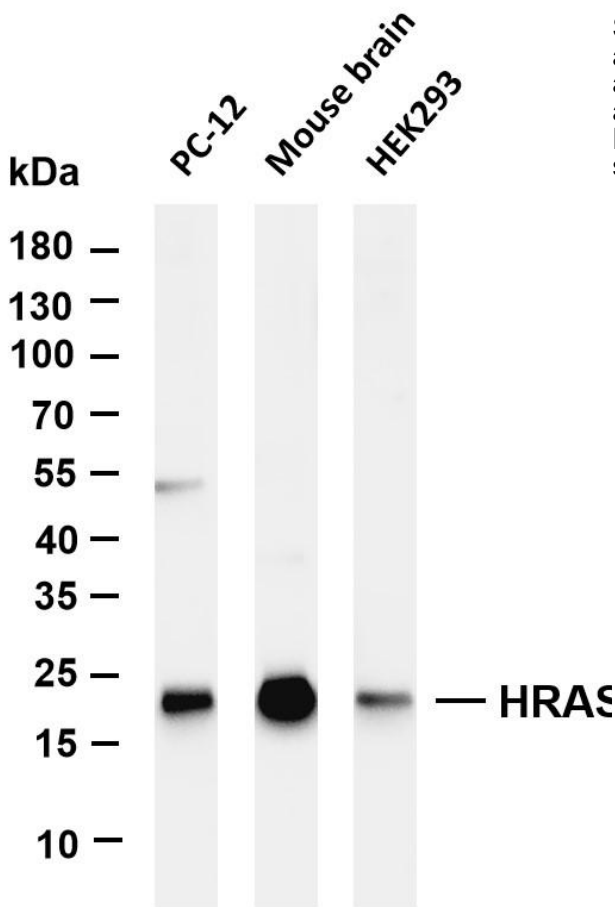
prenatal stage, growth deficiency at the postnatal stage, predisposition to tumor formation, cognitive disability, skin and musculoskeletal abnormalities, distinctive facial appearance and cardiovascular abnormalities. Defects in this gene are implicated in a variety of cancers, including bladder cancer, follicular thyroid cancer, and oral squamous cell carcinoma. Multiple transcript variants, which encode different isoforms, have been identified for this gene. [provided by RefSeq, Jul 2008]

**matters needing attention**

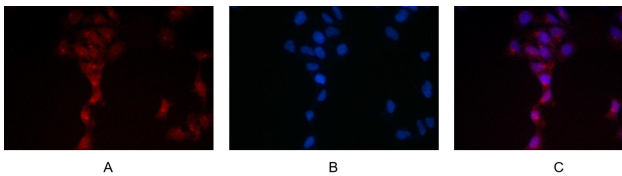
Avoid repeated freezing and thawing!

**Usage suggestions**

This product can be used in immunological reaction related experiments. For more information, please consult technical personnel.



Various whole cell lysates were separated by 4-20% SDS-PAGE, and the membrane was blotted with anti-HRAS antibody. The HRP-conjugated Goat anti-Rabbit IgG(H + L) antibody was used to detect the antibody. Lane 1: PC-12 Lane 2: Mouse brain Lane 3: HEK293 Predicted band size: 21kDa Observed band size: 21kDa



Immunofluorescence analysis of HEK293. Picture A: GTPase HRAS antibody (red). Picture B: DAPI (blue). Picture C: Merge of A+B

杭州臻优品生物科技有限公司

热销产品:

蛋白、一抗、抗体对、ELISA试剂盒、生化试剂盒  
CCK8试剂盒、QPCR检测试剂盒

检测服务:

ELISA检测及定制服务 | 生化检测 | PCR、QPCR检测 | WB检测  
ICO-IP检测 | 切片 | 染色 | 免疫组化 | 免疫荧光 | 透射电镜全套  
| 宏基因组、转录组、基因组、蛋白组、代谢组测序



关注官网



关注客服