



FAP Rabbit mAb

Catalog No	YP-rAb-17746
Isotype	IgG
Reactivity	Human
Applications	WB,IHC,IF,IP,ELISA
Gene Name	FAP
Protein Name	Seprase (170 kDa melanoma membrane-bound gelatinase) (Fibroblast activation protein alpha) (Integral membrane serine protease)
Purification Process	Protein A
Specificity	Endogenous
Formulation	PBS, 50% glycerol, 0.05% Proclin 300, 0.05%BSA
Source	Monoclonal, Rabbit,IgG
Dilution	IHC 1:200-1:1000; WB 1:2000-1:10000; IF 1:200-1:1000; ELISA 1:5000-1:20000; IP 1:50-1:200; Note: For IHC, we suggest antigen retrieval with TE buffer pH 9.0
Concentration	0.5 mg/ml
Purity	≥90%
Storage Stability	-15° C to -25° C/1 year(Do not lower than -25° C)
Synonyms	Seprase ; 170 kDa melanoma membrane-bound gelatinase ; Fibroblast activation protein alpha ; Integral membrane serine protease ;
Observed Band	87kD
Calculated Molecular Weight	87kD
Cell Pathway	Membrane
Tissue Specificity	Expressed in adipose tissue. Expressed in the dermal fibroblasts in the fetal skin. Expressed in the granulation tissue of healing wounds and on reactive stromal fibroblast in epithelial cancers. Expressed in activated fibroblast-like synoviocytes from inflamed synovial tissues. Expressed in activated hepatic stellate cells (HSC) and myofibroblasts from cirrhotic liver, but not detected in normal liver. Expressed in glioma cells (at protein level). Expressed in glioblastomas and glioma cells. Isoform 1 and isoform 2 are expressed in melanoma, carcinoma and fibroblast cell lines.
Function	Catalytic activity:Degrades gelatin and heat-denatured type I and type IV collagen, but not native type I or type IV collagen. Does not cleave laminin, fibronectin, fibrin or casein.,Function:May have a role in tissue remodeling during development and wound healing, and may contribute to invasiveness in malignant cancers.,induction:In fibroblasts at times and sites of tissue remodeling during development, tissue repair, and carcinogenesis.,PTM:N-glycosylated.,PTM:The





N-terminus may be blocked.,similarity:Belongs to the peptidase S9B family.,subcellular location:Found in cell surface lamellipodia, invadopodia and on shed vesicles.,subunit:Homodimer, or heterodimer with DPP4. The monomer is inactive.,tissue specificity:Fibroblast specific.,

Background

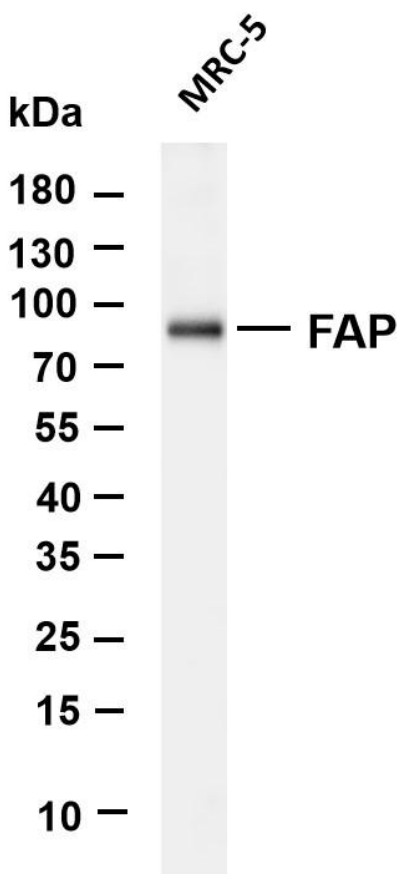
The protein encoded by this gene is a homodimeric integral membrane gelatinase belonging to the serine protease family. It is selectively expressed in reactive stromal fibroblasts of epithelial cancers, granulation tissue of healing wounds, and malignant cells of bone and soft tissue sarcomas. This protein is thought to be involved in the control of fibroblast growth or epithelial-mesenchymal interactions during development, tissue repair, and epithelial carcinogenesis. Alternatively spliced transcript variants encoding different isoforms have been found for this gene. [provided by RefSeq, Apr 2014],

matters needing attention

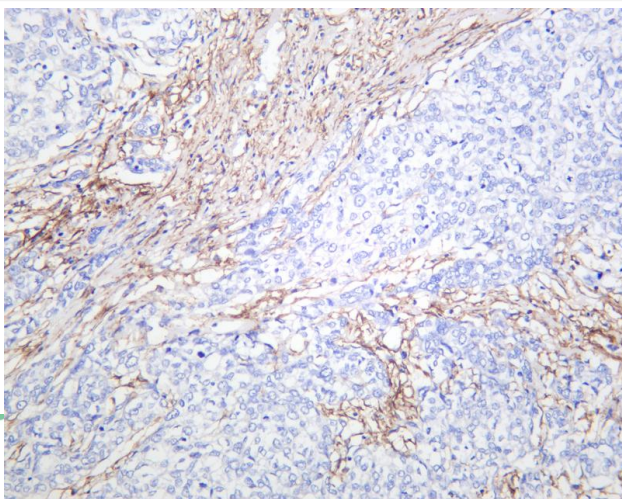
Avoid repeated freezing and thawing!

Usage suggestions

This product can be used in immunological reaction related experiments. For more information, please consult technical personnel.

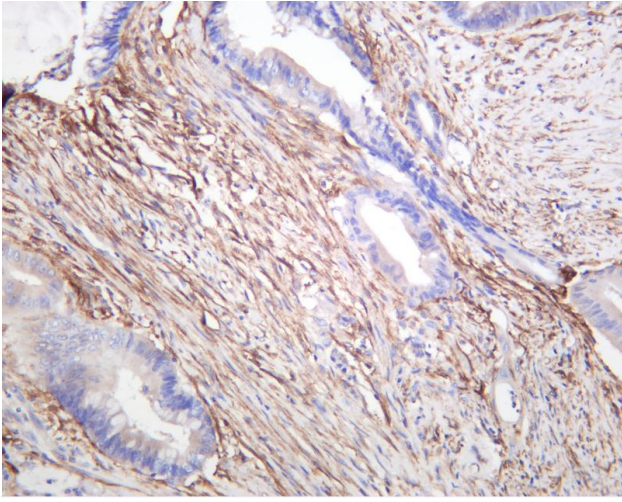


Various whole cell lysates were separated by 10% SDS-PAGE, and the membrane was blotted with anti-FAP antibody. The HRP-conjugated Goat anti-Rabbit IgG(H + L) antibody was used to detect the antibody. Lane 1: MRC-5 Predicted band size: 87kDa Observed band size: 87kDa

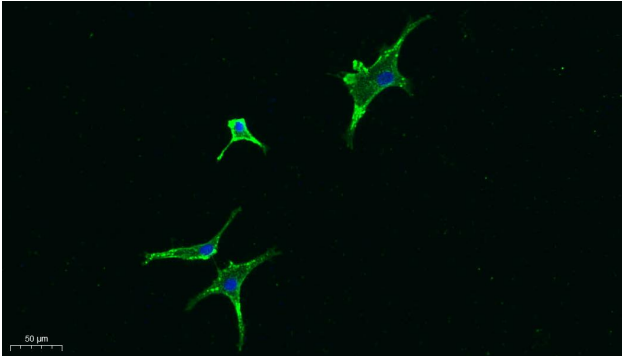


Human breast carcinoma was stained with anti-FAP rabbit antibody





Human colon carcinoma was stained with anti-FAP rabbit antibody



Immunofluorescence analysis of A549. 1, primary Antibody was diluted at 1:200(4°C overnight). 2, Goat Anti Rabbit IgG (H&L) - Alexa Fluor 488 Secondary antibody was diluted at 1:1000(room temperature, 50min).3, DAPI(blue) 10min.

