



MDR1 Rabbit mAb

Catalog No	YP-rAb-17741
Isotype	IgG
Reactivity	Human,Mouse
Applications	WB,IHC,IF,ELISA
Gene Name	ABCB1 MDR1 PGY1
Protein Name	ABC20;ABCB1;ATP binding cassette, sub family B (MDR/TAP), member 1;ATP-binding cassette sub-family B member 1;CD243;CLCS;Colchicin sensitivity;Doxorubicin resistance;GP170;MDR1;MDR1_HUMAN;Multidrug resistance 1;Multidrug resistance protein 1;P glycoprotein 1;P gp;P-glycoprotein 1;PGY1
Purification Process	Protein A
Specificity	Endogenous
Formulation	PBS, 50% glycerol, 0.05% Proclin 300, 0.05%BSA
Source	Monoclonal, Rabbit,IgG
Dilution	IHC 1:200-1:1000; WB 1:2000-1:10000; IF 1:200-1:1000; ELISA 1:5000-1:20000; Note: For IHC, we suggest antigen retrieval with TE buffer pH 9.0
Concentration	0.5 mg/ml
Purity	≥90%
Storage Stability	-15° C to -25° C/1 year(Do not lower than -25° C)
Synonyms	ABC20 ; ABCB1 ; ATP binding cassette, sub family B ; MDR/TAP ; member 1 ; ATP-binding cassette sub-family B member 1 ; CD243 ; CLCS ; Colchicin sensitivity ; Doxorubicin resistance ; GP170 ; MDR1 ; MDR1_HUMAN ; Multidrug resistance 1 ; Multidrug resistance protein 1 ; P glycoprotein 1 ; P gp ; P-glycoprotein 1 ; PGY1 ; P Glycoprotein
Observed Band	140-180kD
Calculated Molecular Weight	141kD
Cell Pathway	Membrane
Tissue Specificity	Kidney
Function	Catalytic activity:ATP + H(2)O + xenobiotic(In) = ADP + phosphate + xenobiotic(Out).,Disease:Genetic variations in ABCB1 are associated with susceptibility to inflammatory bowel disease type 13 (IBD13) [MIM:612244]. Inflammatory bowel disease is characterized by a chronic relapsing intestinal inflammation. It is subdivided into Crohn disease and ulcerative colitis

杭州臻优品生物科技有限公司

热销产品:

蛋白、一抗、抗体对、ELISA试剂盒、生化试剂盒
CCK8试剂盒、QPCR检测试剂盒

检测服务:

ELISA检测及定制服务 | 生化检测 | PCR、QPCR检测 | WB检测
ICO-IP检测 | 切片 | 染色 | 免疫组化 | 免疫荧光 | 透射电镜全套
| 宏基因组、转录组、基因组、蛋白组、代谢组测序



关注官网



关注客服



phenotypes. Crohn disease may involve any part of the gastrointestinal tract, but most frequently the terminal ileum and colon. Bowel inflammation is transmural and discontinuous; it may contain granulomas or be associated with intestinal or perianal fistulas. In contrast, in ulcerative colitis, the inflammation is continuous and limited to rectal and colonic mucosal layers; fistulas and granulomas are not observed. Both diseases include extraintestinal inflammation of the skin, eyes, or joints. Crohn disease and ulcerative colitis are commonly classified as autoimmune diseases. Function: Energy-dependent efflux pump responsible for decreased drug accumulation in multidrug-resistant cells. online information: P-glycoprotein entry, online information: The Singapore human mutation and polymorphism database, polymorphism: Genetic variation in ABCB1 may play a role in patients who do not respond to drug treatment. similarity: Belongs to the ABC transporter family. similarity: Belongs to the ABC transporter family. Multidrug resistance exporter (TC 3.A.1.201) subfamily. similarity: Contains 2 ABC transmembrane type-1 domains. similarity: Contains 2 ABC transporter domains. tissue specificity: Expressed in liver, kidney, small intestine and brain.

Background

The membrane-associated protein encoded by this gene is a member of the superfamily of ATP-binding cassette (ABC) transporters. ABC proteins transport various molecules across extra- and intra-cellular membranes. ABC genes are divided into seven distinct subfamilies (ABC1, MDR/TAP, MRP, ALD, OABP, GCN20, White). This protein is a member of the MDR/TAP subfamily. Members of the MDR/TAP subfamily are involved in multidrug resistance. The protein encoded by this gene is an ATP-dependent drug efflux pump for xenobiotic compounds with broad substrate specificity. It is responsible for decreased drug accumulation in multidrug-resistant cells and often mediates the development of resistance to anticancer drugs. This protein also functions as a transporter in the blood-brain barrier. [provided by RefSeq, Jul 2008],

matters needing attention

Avoid repeated freezing and thawing!

Usage suggestions

This product can be used in immunological reaction related experiments. For more information, please consult technical personnel.



Various whole cell lysates were separated by 4-8% SDS-PAGE, and the membrane was blotted with anti-MDR1 antibody. The HRP-conjugated Goat anti-Rabbit IgG(H + L) antibody was used to detect the antibody. Lane 1: SH-SY5Y Predicted band size: 141kDa Observed band size: 141kDa

杭州臻优品生物科技有限公司

热销产品:

蛋白、一抗、抗体对、ELISA试剂盒、生化试剂盒
CCK8试剂盒、QPCR检测试剂盒

检测服务:

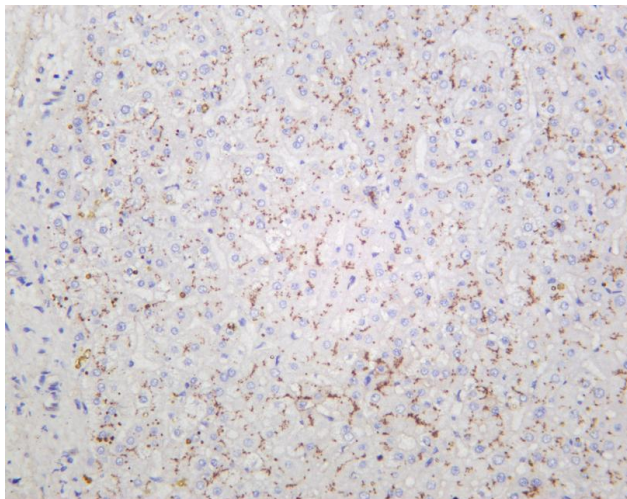
ELISA检测及定制服务 | 生化检测 | PCR、QPCR检测 | WB检测
ICO-IP检测 | 切片 | 染色 | 免疫组化 | 免疫荧光 | 透射电镜全套
| 宏基因组、转录组、基因组、蛋白组、代谢组测序



关注官网



关注客服



Human liver was stained with anti-MDR1 rabbit antibody

杭州臻优品生物科技有限公司

热销产品:

蛋白、一抗、抗体对、ELISA试剂盒、生化试剂盒
CCK8试剂盒、QPCR检测试剂盒

检测服务:

ELISA检测及定制服务 | 生化检测 | PCR、QPCR检测 | WB检测
ICO-IP检测 | 切片 | 染色 | 免疫组化 | 免疫荧光 | 透射电镜全套
| 宏基因组、转录组、基因组、蛋白组、代谢组测序



关注官网



关注客服