



Parvalbumin Rabbit mAb

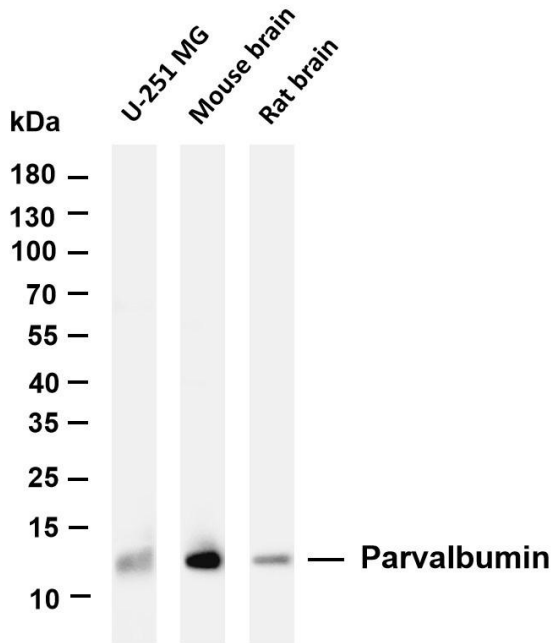
Catalog No	YP-rAb-17739
Isotype	IgG
Reactivity	Human,Mouse,Rat
Applications	WB,IHC,IF,IP,ELISA
Gene Name	PVALB
Protein Name	Parvalbumin alpha
Purification Process	Protein A
Specificity	Endogenous
Formulation	PBS, 50% glycerol, 0.05% Proclin 300, 0.05%BSA
Source	Monoclonal, Rabbit,IgG
Dilution	IHC 1:200-1:1000; WB 1:2000-1:10000; IF 1:200-1:1000; ELISA 1:5000-1:20000; IP 1:50-1:200; Note: For IHC, we suggest antigen retrieval with TE buffer pH 9.0
Concentration	0.5 mg/ml
Purity	≥90%
Storage Stability	-15° C to -25° C/1 year(Do not lower than -25° C)
Synonyms	
Observed Band	12kD
Calculated Molecular Weight	12kD
Cell Pathway	Cytoplasm
Tissue Specificity	Cerebellum,
Function	In muscle, the calcium-binding protein parvalbumin is thought to be involved in muscle relaxation.,mass spectrometry: PubMed:10036163,miscellaneous:This protein binds two calcium ions.,similarity:Belongs to the parvalbumin family.,similarity:Contains 2 EF-hand domains.,
Background	The protein encoded by this gene is a high affinity calcium ion-binding protein that is structurally and functionally similar to calmodulin and troponin C. The encoded protein is thought to be involved in muscle relaxation. Alternative splicing results in multiple transcript variants. [provided by RefSeq, Oct 2015],
matters needing attention	Avoid repeated freezing and thawing!



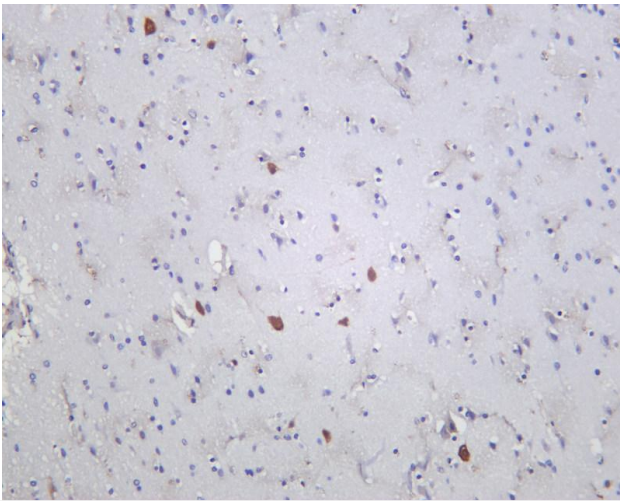


Usage suggestions

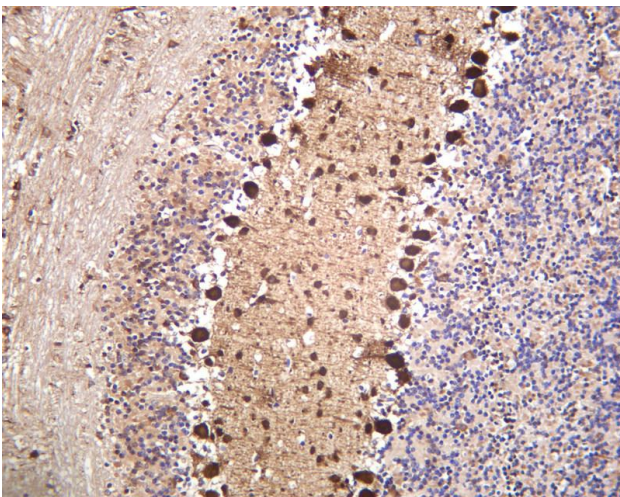
This product can be used in immunological reaction related experiments. For more information, please consult technical personnel.



Various whole cell lysates were separated by 4-20% SDS-PAGE, and the membrane was blotted with anti-Parvalbumin antibody. The HRP-conjugated Goat anti-Rabbit IgG(H + L) antibody was used to detect the antibody. Lane 1: U-251 MG Lane 2: Mouse brain Lane 3: Rat brain Predicted band size: 12kDa Observed band size: 12kDa



Human brain was stained with anti-Parvalbumin rabbit antibody



Mouse brain was stained with anti-Parvalbumin rabbit antibody

杭州臻优品生物科技有限公司

热销产品:

蛋白、一抗、抗体对、ELISA试剂盒、生化试剂盒
CCK8试剂盒、QPCR检测试剂盒

检测服务:

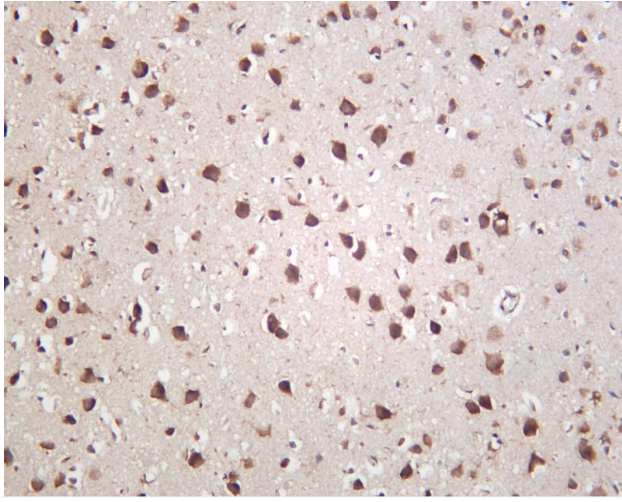
ELISA检测及定制服务 | 生化检测 | PCR、QPCR检测 | WB检测
ICO-IP检测 | 切片 | 染色 | 免疫组化 | 免疫荧光 | 透射电镜全套
| 宏基因组、转录组、基因组、蛋白组、代谢组测序



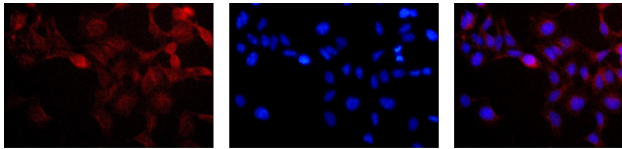
关注官网



关注客服



Rat brain was stained with anti-Parvalbumin rabbit antibody



Immunofluorescence analysis of HEK293. Picture A: Parvalbumin antibody (red). Picture B: DAPI (blue). Picture C: Merge of A+B

A

B

C

