



PUMA Rabbit mAb

Catalog No	YP-rAb-17734
Isotype	IgG
Reactivity	Human,Mouse,Rat
Applications	WB,IHC,IF,ELISA
Gene Name	BBC3
Protein Name	Bcl-2-binding component 3
Purification Process	Protein A
Specificity	Endogenous
Formulation	PBS, 50% glycerol, 0.05% Proclin 300, 0.05%BSA
Source	Monoclonal, Rabbit,IgG
Dilution	IHC 1:500-1:2000; WB 1:2000-1:10000; IF 1:200-1:1000; ELISA 1:5000-1:20000; Note: For IHC, we suggest antigen retrieval with TE buffer pH 9.0
Concentration	0.5 mg/ml
Purity	≥90%
Storage Stability	-15° C to -25° C/1 year(Do not lower than -25° C)
Synonyms	BBC3 ; PUMA ; Bcl-2-binding component 3 ; JFY-1 ; p53 up-regulated modulator of apoptosis
Observed Band	21kD
Calculated Molecular Weight	21kD
Cell Pathway	Mitochondrion
Tissue Specificity	Ubiquitously expressed.
Function	Essential mediator of p53-dependent and p53-independent apoptosis.,induction:By DNA damage, glucocorticoid treatment, growth factor deprivation and p53.,similarity:Belongs to the Bcl-2 family.,subcellular location:Localized to the mitochondria in order to induce cytochrome c release.,subunit:Interacts with MCL1 and BCL2A1 (By similarity). Interacts with BCL2 and BCL2L1/BCL-XL.,tissue specificity:Ubiquitously expressed.,
Background	This gene encodes a member of the BCL-2 family of proteins. This family member belongs to the BH3-only pro-apoptotic subclass. The protein cooperates with direct activator proteins to induce mitochondrial outer membrane permeabilization and apoptosis. It can bind to anti-apoptotic Bcl-2 family members to induce mitochondrial dysfunction and caspase activation. Because of its pro-apoptotic role, this gene is a potential drug target for cancer therapy and for tissue injury.





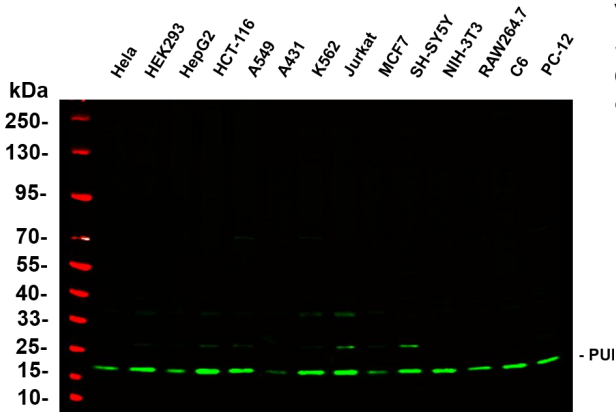
Alternative splicing results in multiple transcript variants. [provided by RefSeq, Dec 2011],

matters needing attention

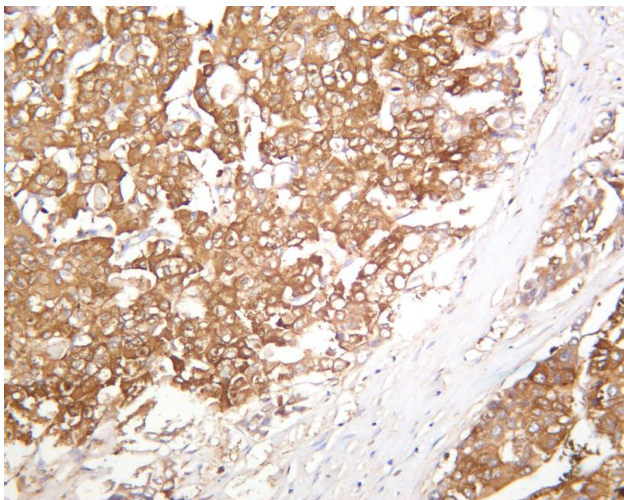
Avoid repeated freezing and thawing!

Usage suggestions

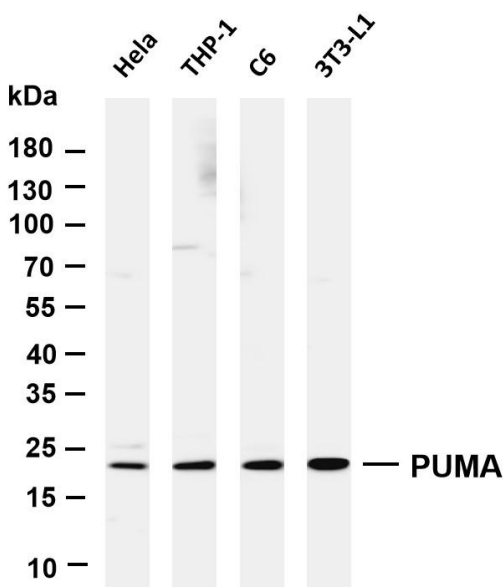
This product can be used in immunological reaction related experiments. For more information, please consult technical personnel.



Various whole cell lysates were separated by 4-20% SDS-PAGE, and the primary antibody was used at 4~C, over night with a 1:5000 dilution. The Dylight 800-conjugated Goat anti-Rabbit antibody



Human hepatocellular carcinoma was stained with anti-PUMA rabbit antibody



Various whole cell lysates were separated by 4-20% SDS-PAGE, and the membrane was blotted with anti-PUMA antibody. The HRP-conjugated Goat anti-Rabbit IgG(H + L) antibody was used to detect the antibody. Lane 1: HeLa Lane 2: THP-1 Lane 3: C6 Lane 4: 3T3-L1 Predicted band size: 21kDa Observed band size: 21kDa

杭州臻优品生物科技有限公司

热销产品:

蛋白、一抗、抗体对、ELISA试剂盒、生化试剂盒
CCK8试剂盒、QPCR检测试剂盒

检测服务:

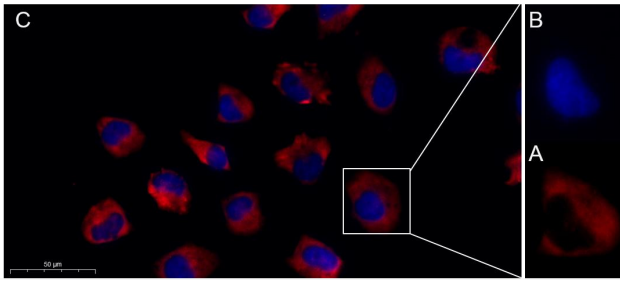
ELISA检测及定制服务 | 生化检测 | PCR、QPCR检测 | WB检测
ICO-IP检测 | 切片 | 染色 | 免疫组化 | 免疫荧光 | 透射电镜全套
| 宏基因组、转录组、基因组、蛋白组、代谢组测序



关注官网



关注客服



Immunofluorescence analysis of HeLa. Picture A: PUMA Rabbit mAb (red). Picture B: DAPI (blue). Picture C: Merge of A+B

杭州臻优品生物科技有限公司

热销产品:

蛋白、一抗、抗体对、ELISA试剂盒、生化试剂盒
CCK8试剂盒、QPCR检测试剂盒

检测服务:

ELISA检测及定制服务 | 生化检测 | PCR、QPCR检测 | WB检测
ICO-IP检测 | 切片 | 染色 | 免疫组化 | 免疫荧光 | 透射电镜全套
| 宏基因组、转录组、基因组、蛋白组、代谢组测序



关注官网



关注客服