



# Src Rabbit mAb

<b>Catalog No</b>	YP-rAb-17723
<b>Isotype</b>	IgG
<b>Reactivity</b>	Human,Mouse,Rat
<b>Applications</b>	WB,IHC,IF,ELISA
<b>Gene Name</b>	SRC SRC1
<b>Protein Name</b>	Proto-oncogene tyrosine-protein kinase Src
<b>Purification Process</b>	Protein A
<b>Specificity</b>	Endogenous
<b>Formulation</b>	PBS, 50% glycerol, 0.05% Proclin 300, 0.05%BSA
<b>Source</b>	Monoclonal, Rabbit,IgG
<b>Dilution</b>	IHC 1:1000-1:4000; WB 1:2000-1:10000; IF 1:200-1:1000; ELISA 1:5000-1:20000; Note: For IHC, we suggest antigen retrieval with TE buffer pH 9.0
<b>Concentration</b>	0.5 mg/ml
<b>Purity</b>	≥90%
<b>Storage Stability</b>	-15° C to -25° C/1 year(Do not lower than -25° C)
<b>Synonyms</b>	SRC ; SRC1 ; Proto-oncogene tyrosine-protein kinase Src ; Proto-oncogene c-Src ; pp60c-src ; p60-Src
<b>Observed Band</b>	60kD
<b>Calculated Molecular Weight</b>	60kD
<b>Cell Pathway</b>	Cytoplasm, Nucleus
<b>Tissue Specificity</b>	Expressed ubiquitously. Platelets, neurons and osteoclasts express 5-fold to 200-fold higher levels than most other tissues.; [Isoform 1]: Expressed in spleen and liver. ; [Isoform 2]: Expressed in brain. ; [Isoform 3]: Expressed in brain.
<b>Function</b>	Catalytic activity:ATP + a [protein]-L-tyrosine = ADP + a [protein]-L-tyrosine phosphate.,PTM:Phosphorylated on Tyr-530 by c-Src kinase (CSK). The phosphorylated form is termed pp60c-src. The phosphorylated tail interacts with the SH2 domain thereby repressing kinase activity.,similarity:Belongs to the protein kinase superfamily. Tyr protein kinase family. SRC subfamily.,similarity:Contains 1 protein kinase domain.,similarity:Contains 1 SH2 domain.,similarity:Contains 1 SH3 domain.,subunit:Interacts with DDEF1/ASAP1; via the SH3 domain. Interacts with CCPG1 (By similarity). Interacts with CDCP1, PELP1, TGFB11 and TOM1L2. Interacts with the cytoplasmic domain of MUC1, phosphorylates it and increases binding of MUC1 with beta-catenin. Interacts with





RALGPS1; via the SH3 domain. Interacts with HEV ORF3 protein; via the SH3 domain.,

### Background

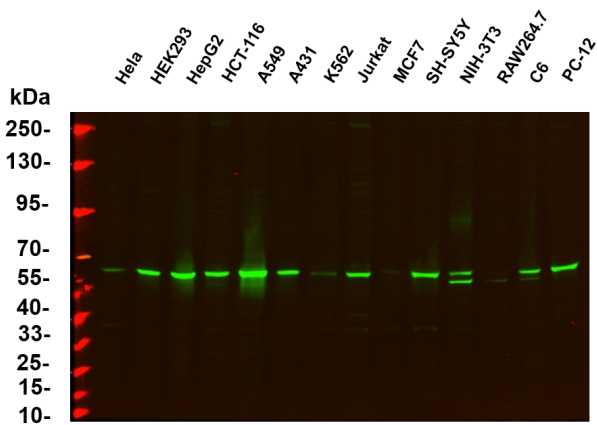
This gene is highly similar to the v-src gene of Rous sarcoma virus. This proto-oncogene may play a role in the regulation of embryonic development and cell growth. The protein encoded by this gene is a tyrosine-protein kinase whose activity can be inhibited by phosphorylation by c-SRC kinase. Mutations in this gene could be involved in the malignant progression of colon cancer. Two transcript variants encoding the same protein have been found for this gene. [provided by RefSeq, Jul 2008],

### matters needing attention

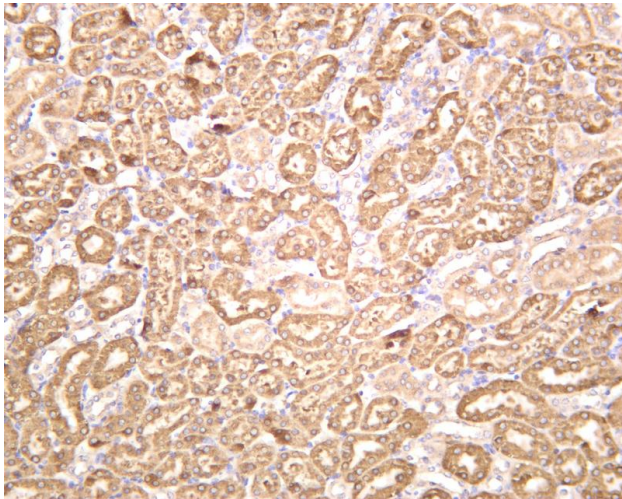
Avoid repeated freezing and thawing!

### Usage suggestions

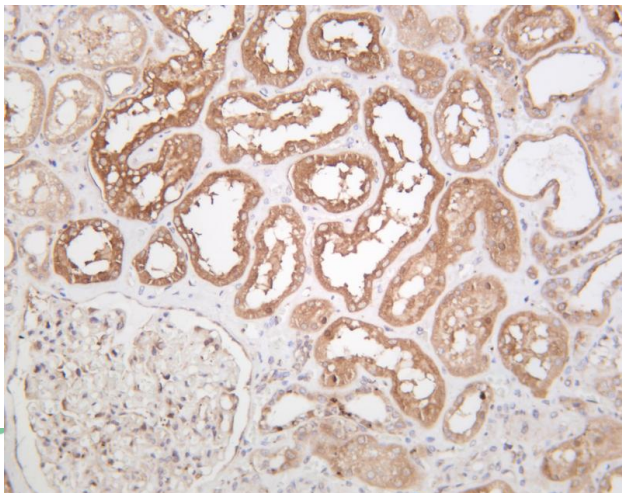
This product can be used in immunological reaction related experiments. For more information, please consult technical personnel.



Various whole cell lysates were separated by 4-20% SDS-PAGE, and the primary antibody was used at 4~C, over night with a 1:5000 dilution . The Dylight 800-conjugated Goat anti-Rabbit antibody



Mouse kidney was stained with anti-Src rabbit antibody



Human kidney was stained with anti-Src rabbit antibody

#### 热销产品:

蛋白、一抗、抗体对、ELISA试剂盒、生化试剂盒  
CCK8试剂盒、QPCR检测试剂盒

#### 检测服务:

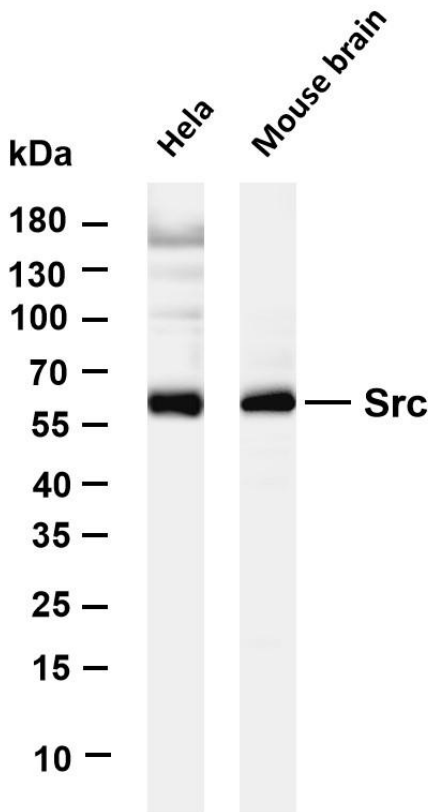
ELISA检测及定制服务 | 生化检测 | PCR、QPCR检测 | WB检测  
ICO-IP检测 | 切片 | 染色 | 免疫组化 | 免疫荧光 | 透射电镜全套  
| 宏基因组、转录组、基因组、蛋白组、代谢组测序



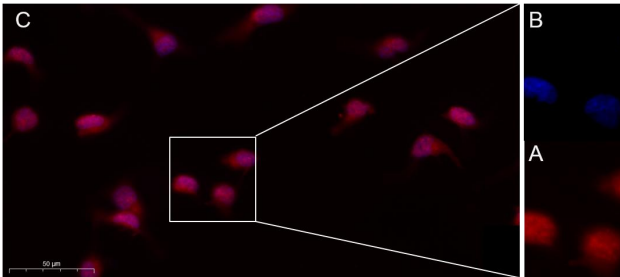
关注官网



关注客服



Various whole cell lysates were separated by 4-20% SDS-PAGE, and the membrane was blotted with anti-Src antibody. The HRP-conjugated Goat anti-Rabbit IgG(H + L) antibody was used to detect the antibody. Lane 1: HeLa Lane 2: Mouse brain Predicted band size: 60kDa Observed band size: 60kDa



Immunofluorescence analysis of HeLa. Picture A: Src Rabbit mAb (red). Picture B: DAPI (blue). Picture C: Merge of A+B

