



# mtTFA Rabbit mAb

<b>Catalog No</b>	YP-rAb-17720
<b>Isotype</b>	IgG
<b>Reactivity</b>	Human,Bovine
<b>Applications</b>	WB,IHC,IF,IP,ELISA
<b>Gene Name</b>	TFAM
<b>Protein Name</b>	Transcription factor A mitochondrial
<b>Purification Process</b>	Protein A
<b>Specificity</b>	Endogenous
<b>Formulation</b>	PBS, 50% glycerol, 0.05% Proclin 300, 0.05%BSA
<b>Source</b>	Monoclonal, Rabbit,IgG
<b>Dilution</b>	IHC 1:200-1:1000; WB 1:2000-1:10000; IF 1:200-1:1000; ELISA 1:5000-1:20000; IP 1:50-1:200; Note: For IHC, we suggest antigen retrieval with TE buffer pH 9.0
<b>Concentration</b>	0.5 mg/ml
<b>Purity</b>	≥90%
<b>Storage Stability</b>	-15° C to -25° C/1 year(Do not lower than -25° C)
<b>Synonyms</b>	TFAM ; TCF6 ; TCF6L2 ; Transcription factor A ; mitochondrial ; mtTFA ; Mitochondrial transcription factor 1 ; MtTF1 ; Transcription factor 6 ; TCF-6 ; Transcription factor 6-like 2
<b>Observed Band</b>	24kD
<b>Calculated Molecular Weight</b>	29kD
<b>Cell Pathway</b>	Mitochondrion
<b>Tissue Specificity</b>	Lymphocyte,Pooled,Uterus,
<b>Function</b>	Involved in mitochondrial transcription regulation. Required for accurate and efficient promoter recognition by the mitochondrial RNA polymerase. Activates transcription by binding immediately upstream of transcriptional start sites. Is able to unwind and bend DNA.,similarity:Contains 2 HMG box DNA-binding domains.,subunit:Interacts with TFB1M and TFB2M.,
<b>Background</b>	This gene encodes a key mitochondrial transcription factor containing two high mobility group motifs. The encoded protein also functions in mitochondrial DNA replication and repair. Sequence polymorphisms in this gene are associated with Alzheimer's and Parkinson's diseases. There are pseudogenes for this gene on chromosomes 6, 7, and 11. Alternative splicing results in multiple transcript





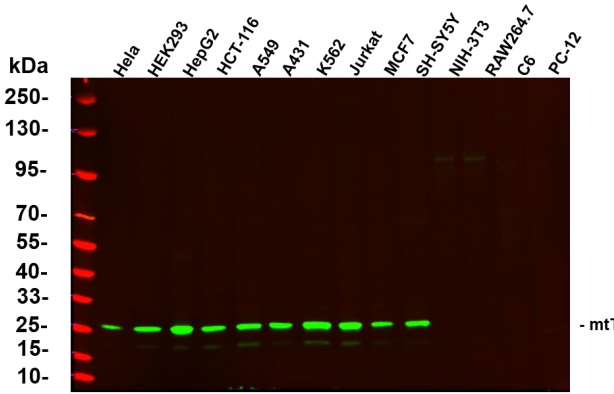
variants. [provided by RefSeq, Aug 2012],

**matters needing attention**

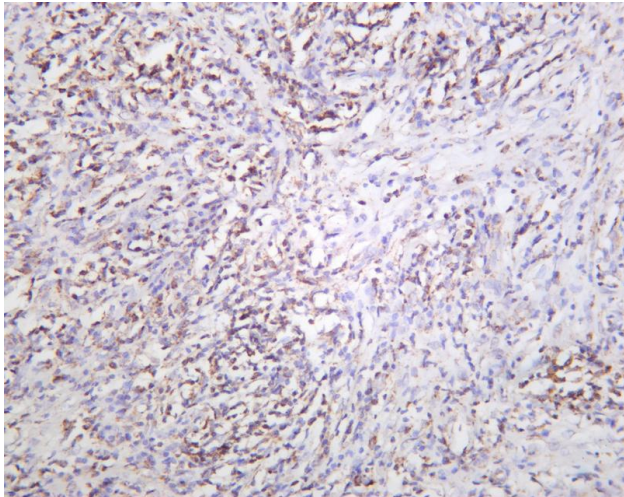
Avoid repeated freezing and thawing!

**Usage suggestions**

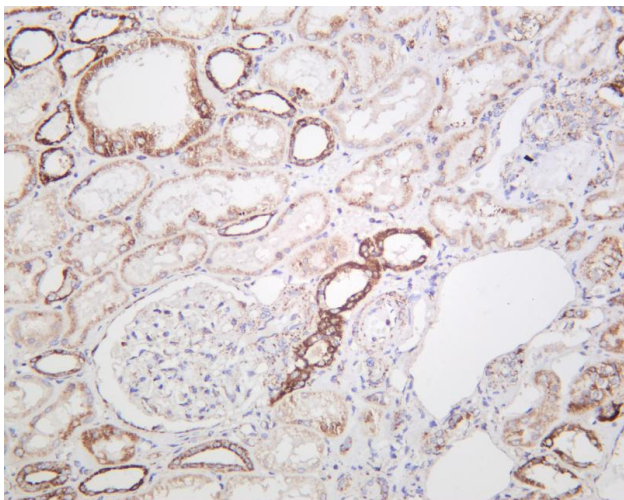
This product can be used in immunological reaction related experiments. For more information, please consult technical personnel.



Various whole cell lysates were separated by 4-20% SDS-PAGE, and the primary antibody was used at 4°C, over night with a 1:5000 dilution. The Dylight 800-conjugated Goat anti-Rabbit antibody



Human thyroid carcinoma was stained with anti-mtTFA rabbit antibody



Human kidney was stained with anti-mtTFA rabbit antibody

**杭州臻优品生物科技有限公司**

**热销产品:**

蛋白、一抗、抗体对、ELISA试剂盒、生化试剂盒  
CCK8试剂盒、QPCR检测试剂盒

**检测服务:**

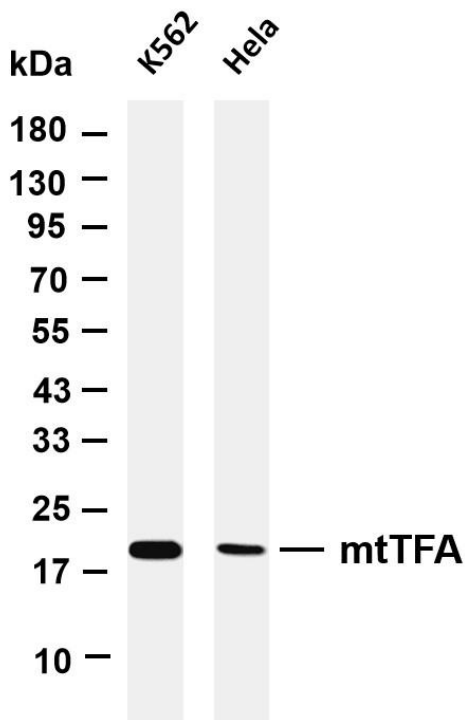
ELISA检测及定制服务 | 生化检测 | PCR、QPCR检测 | WB检测  
ICO-IP检测 | 切片 | 染色 | 免疫组化 | 免疫荧光 | 透射电镜全套  
| 宏基因组、转录组、基因组、蛋白组、代谢组测序



关注官网



关注客服



Various whole cell lysates were separated by 4-20% SDS-PAGE, and the membrane was blotted with anti-mtTFA antibody. The HRP-conjugated Goat anti-Rabbit IgG(H + L) antibody was used to detect the antibody. Lane 1: K562 Lane 2: HeLa Predicted band size: 29kDa Observed band size: 24kDa

