



# MOB1 Rabbit mAb

<b>Catalog No</b>	YP-rAb-17719
<b>Isotype</b>	IgG
<b>Reactivity</b>	Human,Mouse,Rat
<b>Applications</b>	WB,IF,IP,ELISA
<b>Gene Name</b>	
<b>Protein Name</b>	MOB1
<b>Purification Process</b>	Protein A
<b>Specificity</b>	Endogenous
<b>Formulation</b>	PBS, 50% glycerol, 0.05% Proclin 300, 0.05%BSA
<b>Source</b>	Monoclonal, Rabbit,IgG
<b>Dilution</b>	WB 1:2000-1:10000; IF 1:200-1:1000; ELISA 1:5000-1:20000; IP 1:50-1:200;
<b>Concentration</b>	0.5 mg/ml
<b>Purity</b>	≥90%
<b>Storage Stability</b>	-15° C to -25° C/1 year(Do not lower than -25° C)
<b>Synonyms</b>	MOB kinase activator 1A ; Mob1 alpha ; Mob1A ; Mob1 homolog 1B ; Mps one binder kinase activator-like 1B ;
<b>Observed Band</b>	24kD
<b>Calculated Molecular Weight</b>	24kD
<b>Cell Pathway</b>	Cytoplasm, Nucleus
<b>Tissue Specificity</b>	Adrenal gland, bone marrow, brain, placenta, prostate, salivary gland, skeletal muscle, testis, thymus, thyroid gland, heart, spinal cord, fetal brain and fetal liver.
<b>Function</b>	Stimulates the kinase activity of STK38 and STK38L.,PTM:Phosphorylated.,similarity:Belongs to the MOB1/phocein family.,subunit:Binds STK38 and STK38L.,
<b>Background</b>	The protein encoded by this gene is a component of the Hippo signaling pathway, which controls organ size and tumor growth by enhancing apoptosis. Loss of the encoded protein results in cell proliferation and cancer formation. The encoded protein is also involved in the control of microtubule stability during cytokinesis. Several transcript variants encoding different isoforms have been found for this gene. [provided by RefSeq, Nov 2015],



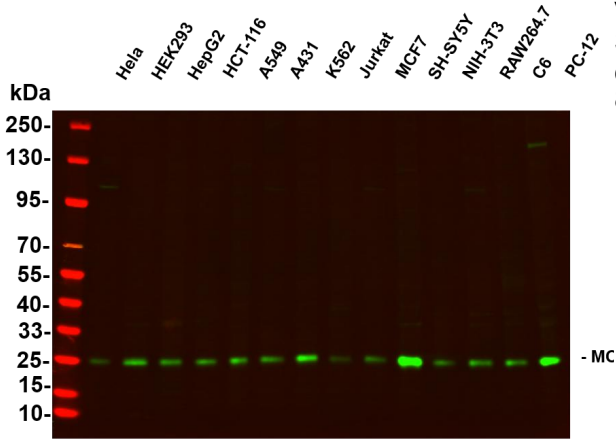


**matters needing attention**

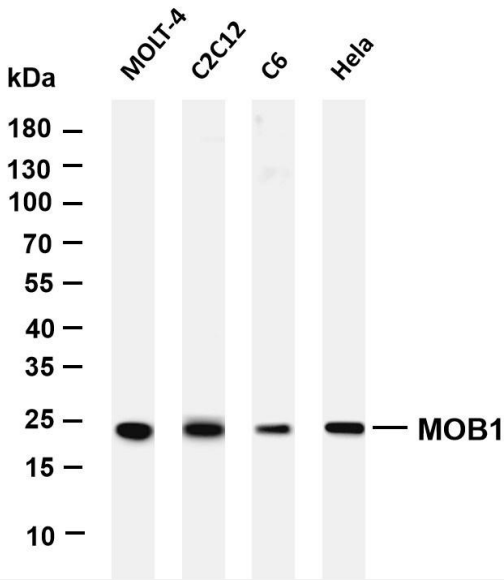
Avoid repeated freezing and thawing!

**Usage suggestions**

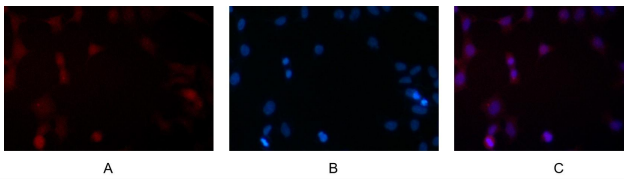
This product can be used in immunological reaction related experiments. For more information, please consult technical personnel.



Various whole cell lysates were separated by 4-20% SDS-PAGE, and the primary antibody was used at 4~C, over night with a 1:5000 dilution. The Dylight 800-conjugated Goat anti-Rabbit antibody



Various whole cell lysates were separated by 4-20% SDS-PAGE, and the membrane was blotted with anti-MOB1 antibody. The HRP-conjugated Goat anti-Rabbit IgG(H + L) antibody was used to detect the antibody. Lane 1: MOLT-4 Lane 2: C2C12 Lane 3: C6 Lane 4: HeLa Predicted band size: 24kDa Observed band size: 24kDa



Immunofluorescence analysis of HEK293. Picture A: MOB1 antibody (red). Picture B: DAPI (blue). Picture C: Merge of A+B

