



CD11b Rabbit mAb

Catalog No	YP-rAb-17714
Isotype	IgG
Reactivity	Human,Mouse,Rat
Applications	WB,IHC,IF,ELISA
Gene Name	ITGAM CD11B CR3A
Protein Name	Integrin alpha-M (CD11 antigen-like family member B) (CR-3 alpha chain) (Cell surface glycoprotein MAC-1 subunit alpha) (Leukocyte adhesion receptor MO1) (Neutrophil adherence receptor) (CD antigen CD11b)
Purification Process	Protein A
Specificity	Endogenous
Formulation	PBS, 50% glycerol, 0.05% Proclin 300, 0.05%BSA
Source	Monoclonal, Rabbit,IgG
Dilution	IHC 1:4000-1:20000; WB 1:2000-1:10000; IF 1:200-1:1000; ELISA 1:5000-1:20000; Note: For IHC, we suggest antigen retrieval with TE buffer pH 9.0
Concentration	0.5 mg/ml
Purity	≥90%
Storage Stability	-15° C to -25° C/1 year(Do not lower than -25° C)
Synonyms	Integrin alpha-M ; CD11 antigen-like family member B ; CR-3 alpha chain ; Cell surface glycoprotein MAC-1 subunit alpha ; Leukocyte adhesion receptor MO1 ; Neutrophil adherence receptor ; CD antigen CD11b ;
Observed Band	170kD
Calculated Molecular Weight	127kD
Cell Pathway	Membrane
Tissue Specificity	Predominantly expressed in monocytes and granulocytes (PubMed:1346576). Expressed in neutrophils (at protein level) (PubMed:21193407).
Function	Disease:Genetic variations in ITGAM has been associated with susceptibility to systemic lupus erythematosus type 6 (SLEB6) [MIM:609939]. Systemic lupus erythematosus (SLE) is a chronic, inflammatory and often febrile multisystemic disorder of connective tissue. It affects principally the skin, joints, kidneys and serosal membranes. It is thought to represent a failure of the regulatory mechanisms of the autoimmune system.,Domain:The integrin I-domain (insert) is a VWFA domain. Integrins with I-domains do not undergo protease cleavage.,Function:Integrin alpha-M/beta-2 is implicated in various adhesive





interactions of monocytes, macrophages and granulocytes as well as in mediating the uptake of complement-coated particles. It is identical with CR-3, the receptor for the iC3b fragment of the third complement component. It probably recognizes the R-G-D peptide in C3b. Integrin alpha-M/beta-2 is also a receptor for fibrinogen, factor X and ICAM1. It recognizes P1 and P2 peptides of fibrinogen gamma chain.,similarity:Belongs to the integrin alpha chain family.,similarity:Contains 1 VWFA domain.,similarity:Contains 7 FG-GAP repeats.,subunit:Heterodimer of an alpha and a beta subunit. Alpha-M associates with beta-2.,tissue specificity:Predominantly expressed in monocytes and granulocytes.,

Background

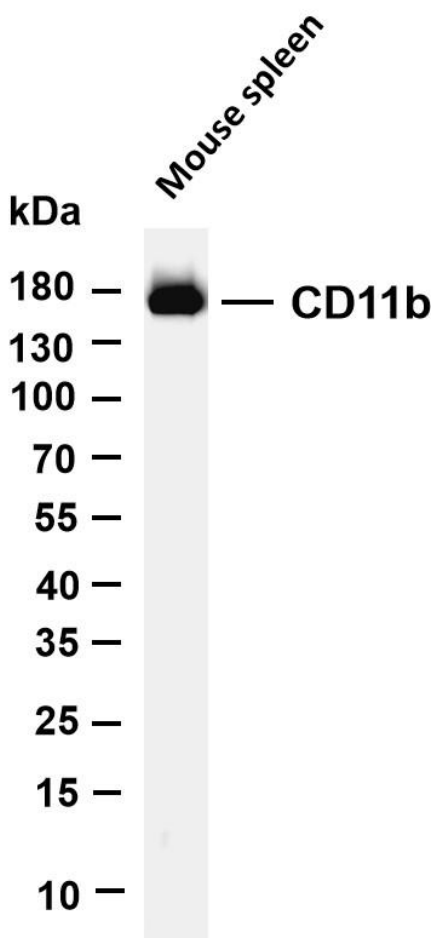
integrin subunit alpha M (ITGAM) Homo sapiens This gene encodes the integrin alpha M chain. Integrins are heterodimeric integral membrane proteins composed of an alpha chain and a beta chain. This I-domain containing alpha integrin combines with the beta 2 chain (ITGB2) to form a leukocyte-specific integrin referred to as macrophage receptor 1 ('Mac-1'), or inactivated-C3b (iC3b) receptor 3 ('CR3'). The alpha M beta 2 integrin is important in the adherence of neutrophils and monocytes to stimulated endothelium, and also in the phagocytosis of complement coated particles. Multiple transcript variants encoding different isoforms have been found for this gene. [provided by RefSeq, Mar 2009],

matters needing attention

Avoid repeated freezing and thawing!

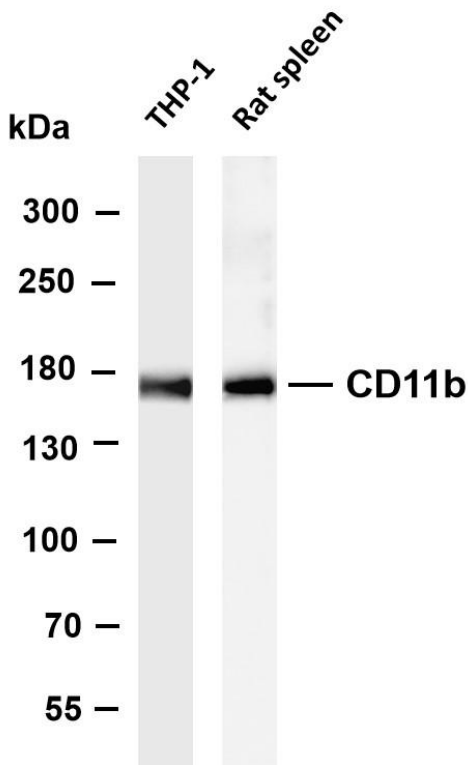
Usage suggestions

This product can be used in immunological reaction related experiments. For more information, please consult technical personnel.

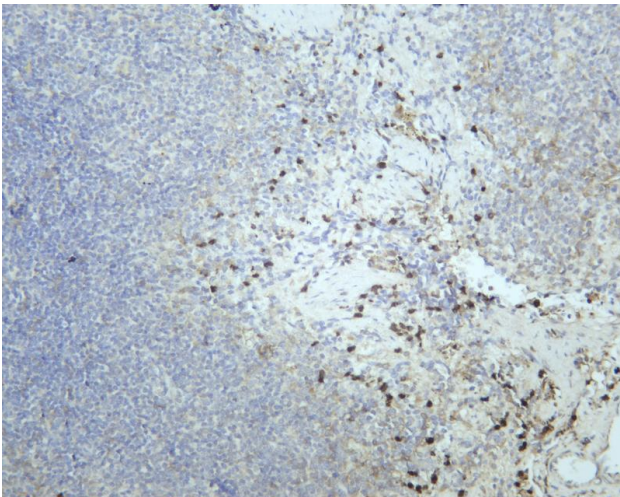


Various whole cell lysates were separated by 4-20% SDS-PAGE, and the membrane was blotted with anti-CD11b antibody. The HRP-conjugated Goat anti-Rabbit IgG(H + L) antibody was used to detect the antibody. Lane 1: Mouse spleen Predicted band size: 127kDa Observed band size: 170kDa

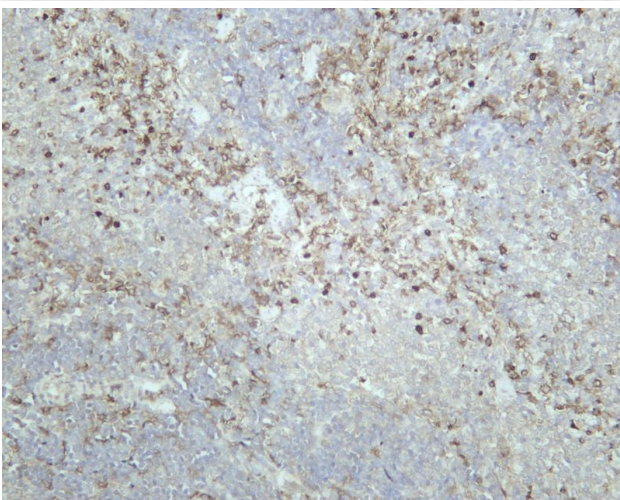




Various whole cell lysates were separated by 4-8% SDS-PAGE, and the membrane was blotted with anti-CD11b antibody. The HRP-conjugated Goat anti-Rabbit IgG(H + L) antibody was used to detect the antibody. Lane 1: THP-1 Lane 2: Rat spleen
Predicted band size: 127kDa Observed band size: 170kDa

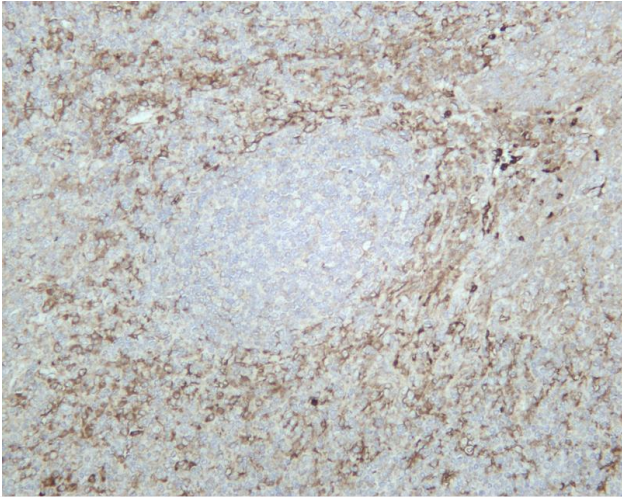


Mouse spleen was stained with anti-CD11b rabbit antibody



Rat spleen was stained with anti-CD11b rabbit antibody





Human tonsil was stained with anti-CD11b rabbit antibody

杭州臻优品生物科技有限公司

热销产品:

蛋白、一抗、抗体对、ELISA试剂盒、生化试剂盒
CCK8试剂盒、QPCR检测试剂盒

检测服务:

ELISA检测及定制服务 | 生化检测 | PCR、QPCR检测 | WB检测
ICO-IP检测 | 切片 | 染色 | 免疫组化 | 免疫荧光 | 透射电镜全套
| 宏基因组、转录组、基因组、蛋白组、代谢组测序



关注官网



关注客服