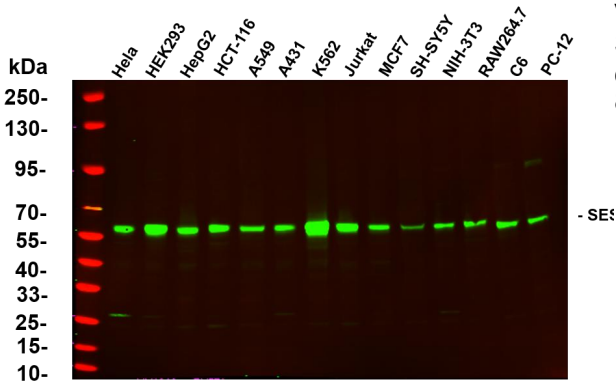




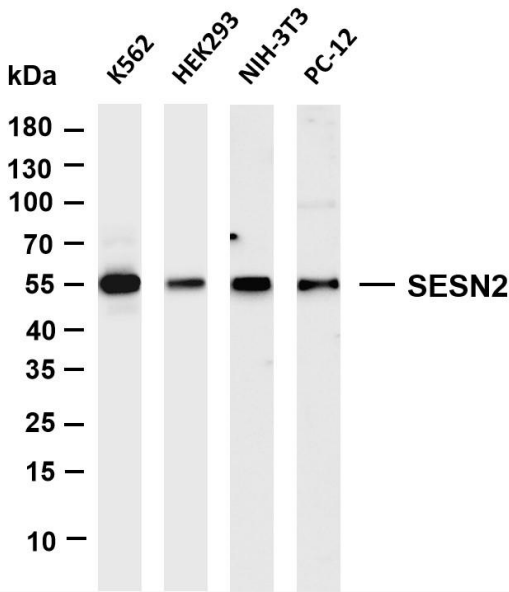
SESN2 Rabbit mAb

Catalog No	YP-rAb-17705
Isotype	IgG
Reactivity	Human,Mouse,Rat
Applications	WB,IF,IP,ELISA
Gene Name	SESN2 SEST2
Protein Name	sesn2
Purification Process	Protein A
Specificity	Endogenous
Formulation	PBS, 50% glycerol, 0.05% Proclin 300, 0.05%BSA
Source	Monoclonal, Rabbit,IgG
Dilution	WB 1:2000-1:10000; IF 1:200-1:1000; ELISA 1:5000-1:20000; IP 1:50-1:200;
Concentration	0.5 mg/ml
Purity	≥90%
Storage Stability	-15° C to -25° C/1 year(Do not lower than -25° C)
Synonyms	Sestrin-2 ; Hi95 ;
Observed Band	55kD
Calculated Molecular Weight	55kD
Cell Pathway	Cytoplasm
Tissue Specificity	Widely expressed.
Function	
Background	This gene encodes a member of the sestrin family of PA26-related proteins. The encoded protein may function in the regulation of cell growth and survival. This protein may be involved in cellular response to different stress conditions. [provided by RefSeq, Jul 2008]
matters needing attention	Avoid repeated freezing and thawing!
Usage suggestions	This product can be used in immunological reaction related experiments. For more information, please consult technical personnel.

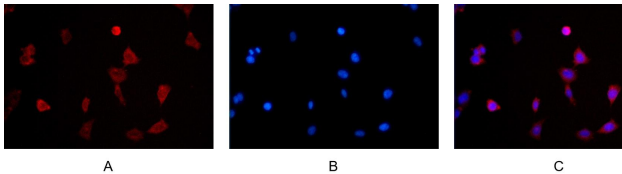




Various whole cell lysates were separated by 4-20% SDS-PAGE, and the primary antibody was used at 4 °C, over night with a 1:5000 dilution. The Dylight 800-conjugated Goat anti-Rabbit antibody



Various whole cell lysates were separated by 4-20% SDS-PAGE, and the membrane was blotted with anti-SES2 antibody. The HRP-conjugated Goat anti-Rabbit IgG(H + L) antibody was used to detect the antibody. Lane 1: K562 Lane 2: HEK293 Lane 3: NIH-3T3 Lane 4: PC-12 Predicted band size: 55kDa Observed band size: 55kDa



Immunofluorescence analysis of HEK293. Picture A: SESN2 antibody (red). Picture B: DAPI (blue). Picture C: Merge of A+B

