



Granzyme B Rabbit mAb

Catalog No	YP-rAb-17704
Isotype	IgG
Reactivity	Human
Applications	WB,IHC,IF,IP,ELISA
Gene Name	GZMB CGL1 CSPB CTLA1 GRB
Protein Name	Granzyme B (C11) (CTLA-1) (Cathepsin G-like 1) (CTSG1) (Cytotoxic T-lymphocyte proteinase 2) (Lymphocyte protease) (Fragmentin-2) (Granzyme-2) (Human lymphocyte protein) (HLP) (SECT) (T-cell serine protease 1-3E)
Purification Process	Protein A
Specificity	Endogenous
Formulation	PBS, 50% glycerol, 0.05% Proclin 300, 0.05%BSA
Source	Monoclonal, Rabbit,IgG
Dilution	IHC 1:1000-1:4000; WB 1:2000-1:10000; IF 1:200-1:1000; ELISA 1:5000-1:20000; IP 1:50-1:200; Note: For IHC, we suggest antigen retrieval with TE buffer pH 9.0
Concentration	0.5 mg/ml
Purity	≥90%
Storage Stability	-15° C to -25° C/1 year(Do not lower than -25° C)
Synonyms	Granzyme B ; C11 ; CTLA-1 ; Cathepsin G-like 1 ; CTSG1 ; Cytotoxic T-lymphocyte proteinase 2 ; Lymphocyte protease ; Fragmentin-2 ; Granzyme-2 ; Human lymphocyte protein ; HLP ; SECT ; T-cell serine protease 1-3E ;
Observed Band	37kD
Calculated Molecular Weight	28kD
Cell Pathway	Lysosome
Tissue Specificity	Breast carcinoma, Large granular lymphocyte leukemia, Pancreas,
Function	Catalytic activity: Preferential cleavage: -Asp- -Xaa- >> -Asn- -Xaa- > -Met- -Xaa-, -Ser- -Xaa-. Function: This enzyme is necessary for target cell lysis in cell-mediated immune responses. It cleaves after Asp. Seems to be linked to an activation cascade of caspases (aspartate-specific cysteine proteases) responsible for apoptosis execution. Cleaves caspase-3, -7, -9 and 10 to give rise to active enzymes mediating apoptosis. induction: By staphylococcal enterotoxin A (SEA) in peripheral blood leukocytes. similarity: Belongs to the peptidase S1 family. similarity: Belongs to the peptidase S1 family. Granzyme subfamily. similarity: Contains 1 peptidase S1 domain. subcellular

杭州臻优品生物科技有限公司

热销产品:

蛋白、一抗、抗体对、ELISA试剂盒、生化试剂盒
CCK8试剂盒、QPCR检测试剂盒

检测服务:

ELISA检测及定制服务 | 生化检测 | PCR、QPCR检测 | WB检测
ICO-IP检测 | 切片 | 染色 | 免疫组化 | 免疫荧光 | 透射电镜全套
| 宏基因组、转录组、基因组、蛋白组、代谢组测序



关注官网



关注客服



location: Cytoplasmic granules of cytolytic T-lymphocytes and natural killer cells.,

Background

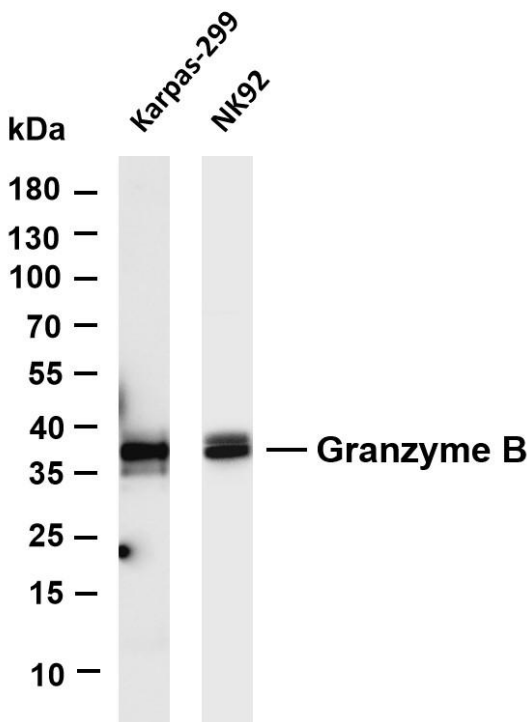
This gene encodes a member of the granzyme subfamily of proteins, part of the peptidase S1 family of serine proteases. The encoded preproprotein is secreted by natural killer (NK) cells and cytotoxic T lymphocytes (CTLs) and proteolytically processed to generate the active protease, which induces target cell apoptosis. This protein also processes cytokines and degrades extracellular matrix proteins, and these roles are implicated in chronic inflammation and wound healing. Expression of this gene may be elevated in human patients with cardiac fibrosis. [provided by RefSeq, Sep 2016],

matters needing attention

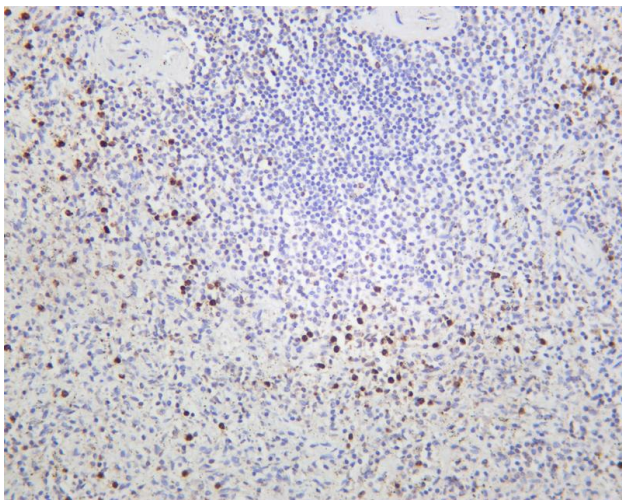
Avoid repeated freezing and thawing!

Usage suggestions

This product can be used in immunological reaction related experiments. For more information, please consult technical personnel.



Various whole cell lysates were separated by 4-20% SDS-PAGE, and the membrane was blotted with anti-Granzyme B antibody. The HRP-conjugated Goat anti-Rabbit IgG(H + L) antibody was used to detect the antibody. Lane 1: Karpas-299 Lane 2: NK92
Predicted band size: 28kDa Observed band size: 37kDa



Human spleen was stained with anti-Granzyme B rabbit antibody

杭州臻优品生物科技有限公司

热销产品:

蛋白、一抗、抗体对、ELISA试剂盒、生化试剂盒
CCK8试剂盒、QPCR检测试剂盒

检测服务:

ELISA检测及定制服务 | 生化检测 | PCR、QPCR检测 | WB检测
ICO-IP检测 | 切片 | 染色 | 免疫组化 | 免疫荧光 | 透射电镜全套
| 宏基因组、转录组、基因组、蛋白组、代谢组测序



关注官网



关注客服