



# SGSH Rabbit mAb

<b>Catalog No</b>	YP-rAb-17703
<b>Isotype</b>	IgG
<b>Reactivity</b>	Human
<b>Applications</b>	WB,IHC,IF,ICC
<b>Gene Name</b>	SGSH;HSS
<b>Protein Name</b>	N-sulphoglucosamine sulphohydrolase;Sulfoglucosamine sulfamidase;Sulphamidase;
<b>Purification Process</b>	Protein A
<b>Specificity</b>	Endogenous
<b>Formulation</b>	PBS, 50% glycerol, 0.05% Proclin 300, 0.05%BSA
<b>Source</b>	Monoclonal, Rabbit,IgG
<b>Dilution</b>	WB 1:1000-5000; IHC 1:100-300; ICC/IF 1:100-300 Note: For IHC, we suggest antigen retrieval with TE buffer pH 9.0
<b>Concentration</b>	0.5 mg/ml
<b>Purity</b>	≥90%
<b>Storage Stability</b>	-15° C to -25° C/1 year(Do not lower than -25° C)
<b>Synonyms</b>	SGSH ; HSS ; N-sulphoglucosamine sulphohydrolase ; Sulfoglucosamine sulfamidase ; Sulphamidase ;
<b>Observed Band</b>	55kD
<b>Calculated Molecular Weight</b>	
<b>Cell Pathway</b>	Lysosome.
<b>Tissue Specificity</b>	
<b>Function</b>	Catalyzes a step in lysosomal heparan sulfate degradation. {ECO:0000269 PubMed:15146460, ECO:0000269 PubMed:24816101, ECO:0000269 PubMed:7493035}.
<b>Background</b>	This gene encodes the enzyme sulfamidase; one of several enzymes involved in the lysosomal degradation of heparan sulfate. Mutations in this gene are associated with the lysosomal storage disease mucopolysaccharidosis IIIA, also known as Sanfilippo syndrome A, which results from impaired degradation of heparan sulfate. Transcripts of varying sizes have been reported but their biological validity has not been determined. [provided by RefSeq, Jun 2017]



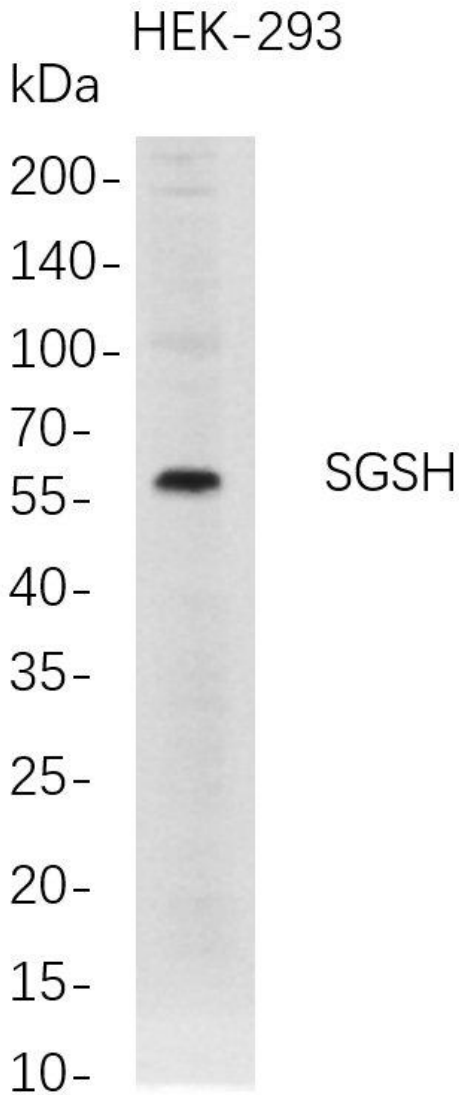


**matters needing attention**

Avoid repeated freezing and thawing!

**Usage suggestions**

This product can be used in immunological reaction related experiments. For more information, please consult technical personnel.



Western Blot analysis of HEK-293 whole cell lysates were separated by 4-20% SDS-PAGE, and the membrane was blotted with anti-SGSH rabbit mAb. The HRP-conjugated Goat anti-Rabbit IgG(H + L) antibody was used to detect the antibody.

杭州臻优品生物科技有限公司

热销产品:

蛋白、一抗、抗体对、ELISA试剂盒、生化试剂盒  
CCK8试剂盒、QPCR检测试剂盒

检测服务:

ELISA检测及定制服务 | 生化检测 | PCR、QPCR检测 | WB检测  
ICO-IP检测 | 切片 | 染色 | 免疫组化 | 免疫荧光 | 透射电镜全套  
| 宏基因组、转录组、基因组、蛋白组、代谢组测序



关注官网



关注客服