



CPVL Rabbit mAb

Catalog No	YP-rAb-17702
Isotype	IgG
Reactivity	Human
Applications	WB,IHC
Gene Name	CPVL;VLP;PSEC0124;UNQ197/PRO223
Protein Name	Probable serine carboxypeptidase CPVL;Carboxypeptidase, vitellogenic-like;Vitellogenic carboxypeptidase-like protein;VCP-like protein;hVLP;
Purification Process	Protein A
Specificity	Endogenous
Formulation	PBS, 50% glycerol, 0.05% Proclin 300, 0.05%BSA
Source	Monoclonal, Rabbit,IgG
Dilution	WB 1:1000-5000; IHC 1:100-300 Note: For IHC, we suggest antigen retrieval with TE buffer pH 9.0
Concentration	0.5 mg/ml
Purity	≥90%
Storage Stability	-15° C to -25° C/1 year(Do not lower than -25° C)
Synonyms	CPVL ; VLP ; PSEC0124 ; UNQ197/PRO223 ; Probable serine carboxypeptidase CPVL ; Carboxypeptidase, vitellogenic-like ; Vitellogenic carboxypeptidase-like protein ; VCP-like protein ; hVLP ;
Observed Band	52kD
Calculated Molecular Weight	
Cell Pathway	
Tissue Specificity	Expressed in macrophages but not in other leukocytes. Abundantly expressed in heart and kidney. Also expressed in spleen, leukocytes, and placenta.
Function	May be involved in the digestion of phagocytosed particles in the lysosome, participation in an inflammatory protease cascade, and trimming of peptides for antigen presentation.
Background	The protein encoded by this gene is a carboxypeptidase and bears strong sequence similarity to serine carboxypeptidases. Carboxypeptidases are a large class of proteases that act to cleave a single amino acid from the carboxy termini of proteins or peptides. The exact function of this protein, however, has not been determined. [provided by RefSeq, Jan 2017]



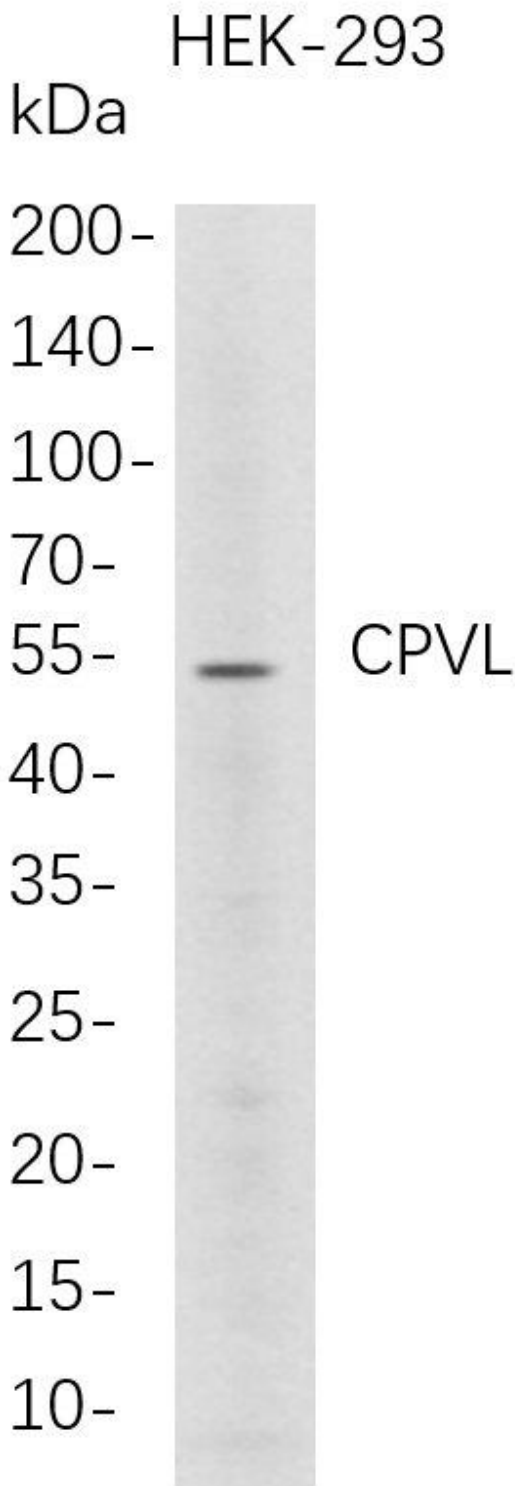


matters needing attention

Avoid repeated freezing and thawing!

Usage suggestions

This product can be used in immunological reaction related experiments. For more information, please consult technical personnel.



Western Blot analysis of HEK-293 whole cell lysates were separated by 4-20% SDS-PAGE, and the membrane was blotted with anti-CPVL rabbit mAb. The HRP-conjugated Goat anti-Rabbit IgG(H + L) antibody was used to detect the antibody.

杭州臻优品生物科技有限公司

热销产品:

蛋白、一抗、抗体对、ELISA试剂盒、生化试剂盒
CCK8试剂盒、QPCR检测试剂盒

检测服务:

ELISA检测及定制服务 | 生化检测 | PCR、QPCR检测 | WB检测
ICO-IP检测 | 切片 | 染色 | 免疫组化 | 免疫荧光 | 透射电镜全套
| 宏基因组、转录组、基因组、蛋白组、代谢组测序



关注官网



关注客服



杭州臻优品生物科技有限公司

热销产品:

蛋白、一抗、抗体对、ELISA试剂盒、生化试剂盒
CCK8试剂盒、QPCR检测试剂盒

检测服务:

ELISA检测及定制服务 | 生化检测 | PCR、QPCR检测 | WB检测
ICO-IP检测 | 切片 | 染色 | 免疫组化 | 免疫荧光 | 透射电镜全套
| 宏基因组、转录组、基因组、蛋白组、代谢组测序



关注官网



关注客服