



TAGAP Rabbit mAb

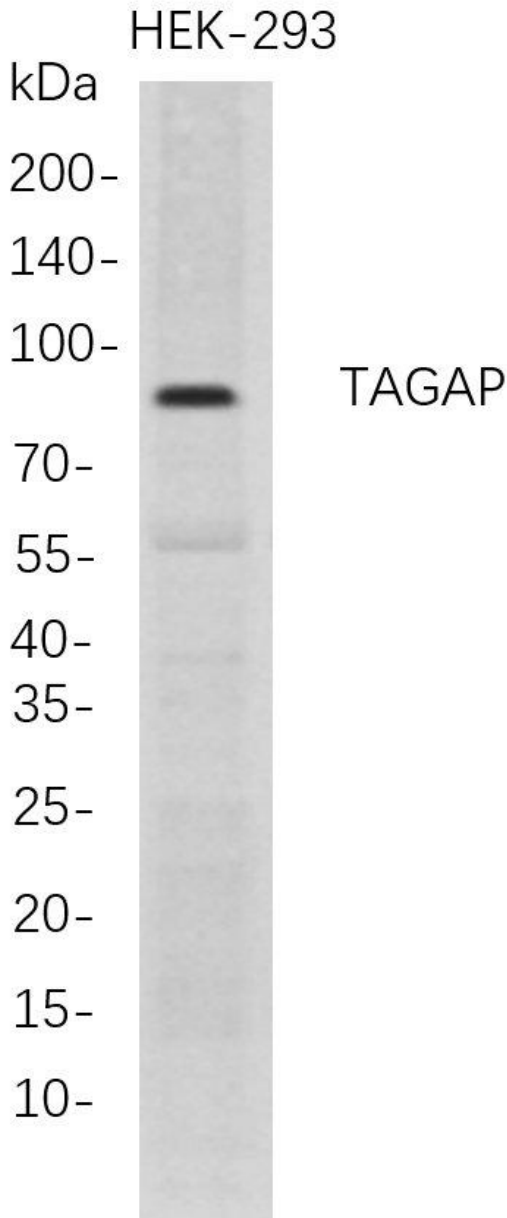
Catalog No	YP-rAb-17698
Isotype	IgG
Reactivity	Human
Applications	WB,FC,IP
Gene Name	TAGAP;TAGAP1;FKSG15
Protein Name	T-cell activation Rho GTPase-activating protein;T-cell activation GTPase-activating protein;
Purification Process	Protein A
Specificity	Endogenous
Formulation	PBS, 50% glycerol, 0.05% Proclin 300, 0.05%BSA
Source	Monoclonal, Rabbit,IgG
Dilution	WB 1:1000-5000; FC 1:100-300; IP 1:50-100
Concentration	0.5 mg/ml
Purity	≥90%
Storage Stability	-15° C to -25° C/1 year(Do not lower than -25° C)
Synonyms	TAGAP ; TAGAP1 ; FKSG15 ; T-cell activation Rho GTPase-activating protein ; T-cell activation GTPase-activating protein ;
Observed Band	80kD
Calculated Molecular Weight	
Cell Pathway	
Tissue Specificity	
Function	May function as a GTPase-activating protein and may play important roles during T-cell activation. {ECO:0000269 PubMed:15177553}.
Background	This gene encodes a member of the Rho GTPase-activator protein superfamily. The encoded protein may function as a Rho GTPase-activating protein. Alterations in this gene may be associated with several diseases, including rheumatoid arthritis, celiac disease, and multiple sclerosis. Alternate splicing results in multiple transcript variants encoding distinct isoforms. [provided by RefSeq, Jul 2013],
matters needing attention	Avoid repeated freezing and thawing!





Usage suggestions

This product can be used in immunological reaction related experiments. For more information, please consult technical personnel.



Western Blot analysis of HEK-293 whole cell lysates were separated by 4-20% SDS-PAGE, and the membrane was blotted with anti-TAGAP rabbit mAb. The HRP-conjugated Goat anti-Rabbit IgG(H + L) antibody was used to detect the antibody.

