



RBM1Y1A1 Rabbit mAb

Catalog No	YP-rAb-17697
Isotype	IgG
Reactivity	Human
Applications	WB,IHC
Gene Name	RBM1Y1A1;RBM1;RBM2;YRRM1;YRRM2
Protein Name	RNA-binding motif protein, Y chromosome, family 1 member A1;RNA-binding motif protein 1;RNA-binding motif protein 2;Y chromosome RNA recognition motif 1;hRBM1Y;
Purification Process	Protein A
Specificity	Endogenous
Formulation	PBS, 50% glycerol, 0.05% Proclin 300, 0.05%BSA
Source	Monoclonal, Rabbit,IgG
Dilution	WB 1:1000-5000; IHC 1:100-300 Note: For IHC, we suggest antigen retrieval with TE buffer pH 9.0
Concentration	0.5 mg/ml
Purity	≥90%
Storage Stability	-15° C to -25° C/1 year(Do not lower than -25° C)
Synonyms	RBM1Y1A1 ; RBM1 ; RBM2 ; YRRM1 ; YRRM2 ; RNA-binding motif protein, Y chromosome, family 1 member A1 ; RNA-binding motif protein 1 ; RNA-binding motif protein 2 ; Y chromosome RNA recognition motif 1 ; hRBM1Y ;
Observed Band	55kD
Calculated Molecular Weight	
Cell Pathway	Nucleus.
Tissue Specificity	Testis-specific. {ECO:0000269 PubMed:8269511}.
Function	RNA-binding protein involved in pre-mRNA splicing. Required for sperm development. Acts additively with TRA2B to promote exon 7 inclusion of the survival motor neuron SMN. Binds non-specifically to mRNAs. {ECO:0000269 PubMed:12165565, ECO:0000269 PubMed:8269511}.
Background	This gene encodes a protein containing an RNA-binding motif in the N-terminus and four SRGY (serine, arginine, glycine, tyrosine) boxes in the C-terminus. This protein is thought to function as a splicing regulator during spermatogenesis. Multiple closely related paralogs of this gene are found in a gene cluster in the AZFb azoospermia factor region of chromosome Y. Most of these related copies





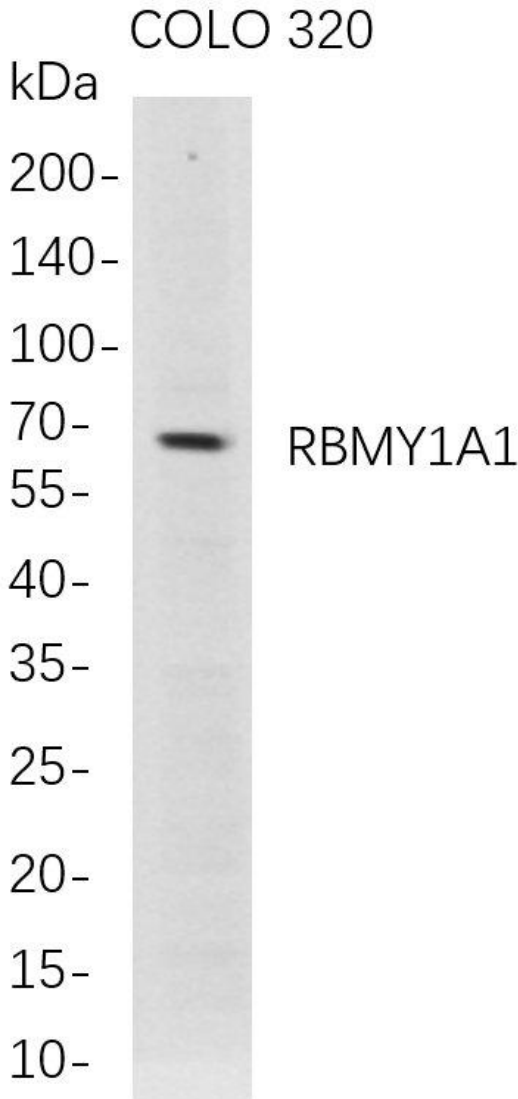
are thought to be pseudogenes, though several likely encode functional proteins. [provided by RefSeq, Mar 2016]

matters needing attention

Avoid repeated freezing and thawing!

Usage suggestions

This product can be used in immunological reaction related experiments. For more information, please consult technical personnel.



Western Blot analysis of COLO 320 whole cell lysates were separated by 4-20% SDS-PAGE, and the membrane was blotted with anti-RBMY1A1 rabbit mAb. The HRP-conjugated Goat anti-Rabbit IgG(H + L) antibody was used to detect the antibody.

