



# Map17 Rabbit mAb

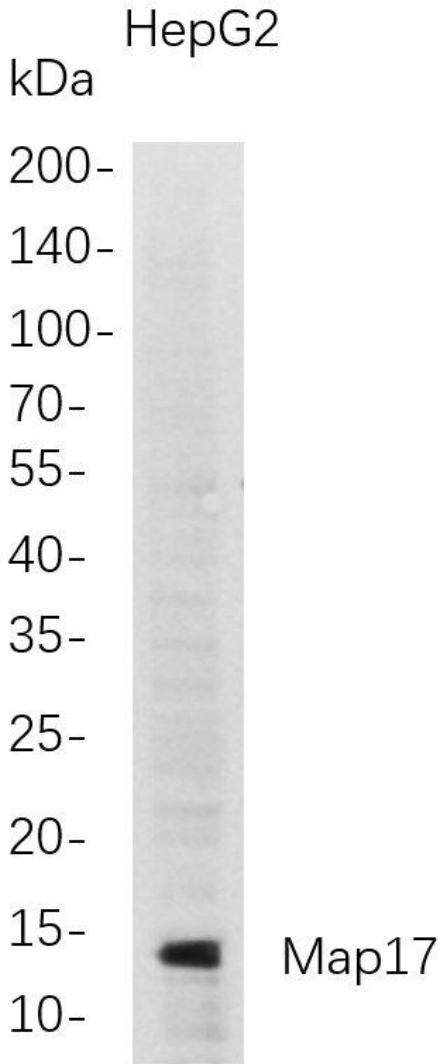
<b>Catalog No</b>	YP-rAb-17694
<b>Isotype</b>	IgG
<b>Reactivity</b>	Human
<b>Applications</b>	WB,IP
<b>Gene Name</b>	PDZK1IP1;MAP17
<b>Protein Name</b>	PDZK1-interacting protein 1;17 kDa membrane-associated protein;Protein DD96;
<b>Purification Process</b>	Protein A
<b>Specificity</b>	Endogenous
<b>Formulation</b>	PBS, 50% glycerol, 0.05% Proclin 300, 0.05%BSA
<b>Source</b>	Monoclonal, Rabbit,IgG
<b>Dilution</b>	WB 1:1000-5000; IP 1:50-100
<b>Concentration</b>	0.5 mg/ml
<b>Purity</b>	≥90%
<b>Storage Stability</b>	-15° C to -25° C/1 year(Do not lower than -25° C)
<b>Synonyms</b>	PDZK1IP1 ; MAP17 ; PDZK1-interacting protein 1 ; 17 kDa membrane-associated protein ; Protein DD96 ;
<b>Observed Band</b>	13kD
<b>Calculated Molecular Weight</b>	
<b>Cell Pathway</b>	Apical cell membrane; Single-pass membrane protein.
<b>Tissue Specificity</b>	
<b>Function</b>	Auxiliary protein of electrogenic Na(+)-coupled sugar symporter SLC5A2/SGLT2 and SLC5A1/SGLT1 (PubMed:34880493, PubMed:37217492, PubMed:38057552). Essential for the transporter activity of SLC5A2/SGLT2 but not SLC5A1/SGLT1 (PubMed:37217492). {ECO:0000269 PubMed:34880493, ECO:0000269 PubMed:37217492, ECO:0000269 PubMed:38057552}.
<b>Background</b>	Located in extracellular exosome. [provided by Alliance of Genome Resources, Feb 2025]
<b>matters needing attention</b>	Avoid repeated freezing and thawing!





### Usage suggestions

This product can be used in immunological reaction related experiments. For more information, please consult technical personnel.



Western Blot analysis of HepG2 whole cell lysates were separated by 4-20% SDS-PAGE, and the membrane was blotted with anti-Map17 rabbit mAb. The HRP-conjugated Goat anti-Rabbit IgG(H + L) antibody was used to detect the antibody.

