



BRAT1 Rabbit mAb

Catalog No	YP-rAb-17692
Isotype	IgG
Reactivity	Human
Applications	WB,IF,ICC,FC,IP
Gene Name	BRAT1;BAAT1;C7orf27
Protein Name	BRCA1-associated ATM activator 1;BRCA1-associated protein required for ATM activation protein 1;
Purification Process	Protein A
Specificity	Endogenous
Formulation	PBS, 50% glycerol, 0.05% Proclin 300, 0.05%BSA
Source	Monoclonal, Rabbit,IgG
Dilution	WB 1:1000-5000; ICC/IF 1:100-300; FC 1:100-300; IP 1:50-100
Concentration	0.5 mg/ml
Purity	≥90%
Storage Stability	-15° C to -25° C/1 year(Do not lower than -25° C)
Synonyms	BRAT1 ; BAAT1 ; C7orf27 ; BRCA1-associated ATM activator 1 ; BRCA1-associated protein required for ATM activation protein 1 ;
Observed Band	90kD
Calculated Molecular Weight	
Cell Pathway	Nucleus. Cytoplasm. Note=Present at double strand breaks (DSBs)following ionizing radiation treatment. The ubiquitinated form localizes in the nucleus in a NDFIP1-dependent manner..
Tissue Specificity	Ubiquitously expressed. {ECO:0000269 PubMed:16452482}.
Function	Involved in DNA damage response; activates kinases ATM, SMC1A and PRKDC by modulating their phosphorylation status following ionizing radiation (IR) stress (PubMed:16452482, PubMed:22977523). Plays a role in regulating mitochondrial function and cell proliferation (PubMed:25070371). Required for protein stability of MTOR and MTOR-related proteins, and cell cycle progress by growth factors (PubMed:25657994). {ECO:0000269 PubMed:16452482, ECO:0000269 PubMed:22977523, ECO:0000269 PubMed:25070371, ECO:0000269 PubMed:25657994}.
Background	The protein encoded by this ubiquitously expressed gene interacts with the tumor suppressing BRCA1 (breast cancer 1) protein and and the ATM (ataxia

杭州臻优品生物科技有限公司

热销产品:

蛋白、一抗、抗体对、ELISA试剂盒、生化试剂盒
CCK8试剂盒、QPCR检测试剂盒

检测服务:

ELISA检测及定制服务 | 生化检测 | PCR、QPCR检测 | WB检测
ICO-IP检测 | 切片 | 染色 | 免疫组化 | 免疫荧光 | 透射电镜全套
| 宏基因组、转录组、基因组、蛋白组、代谢组测序



关注官网



关注客服



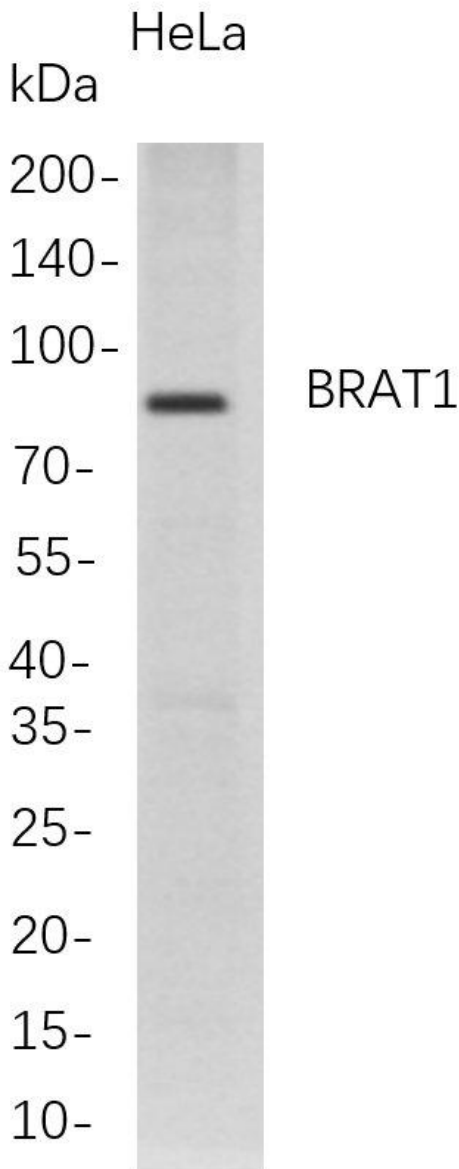
telangiectasia mutated) protein. ATM is thought to be a master controller of cell cycle checkpoint signalling pathways that are required for cellular responses to DNA damage such as double-strand breaks that are induced by ionizing radiation and complexes with BRCA1 in the multi-protein complex BASC (BRAC1-associated genome surveillance complex). The protein encoded by this gene is thought to play a role in the DNA damage pathway regulated by BRCA1 and ATM. [provided by RefSeq, Mar 2012]

matters needing attention

Avoid repeated freezing and thawing!

Usage suggestions

This product can be used in immunological reaction related experiments. For more information, please consult technical personnel.



Western Blot analysis of HeLa whole cell lysates were separated by 4-20% SDS-PAGE, and the membrane was blotted with anti-BRAT1 rabbit mAb. The HRP-conjugated Goat anti-Rabbit IgG(H + L) antibody was used to detect the antibody.

