



# Prostein Rabbit mAb

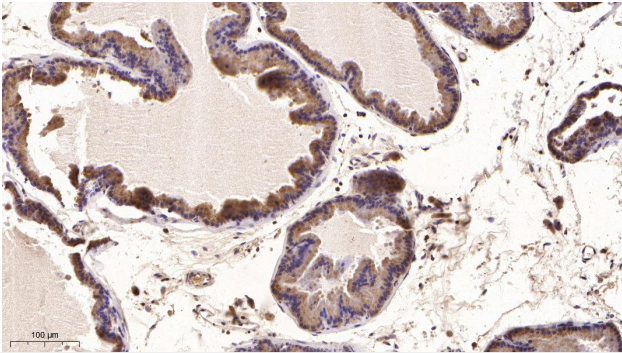
<b>Catalog No</b>	YP-rAb-17691
<b>Isotype</b>	IgG
<b>Reactivity</b>	Human
<b>Applications</b>	IHC
<b>Gene Name</b>	SLC45A3;PCANAP6;PRST
<b>Protein Name</b>	Solute carrier family 45 member 3;Prostate cancer-associated protein 6;Prostein;
<b>Purification Process</b>	Protein A
<b>Specificity</b>	Endogenous
<b>Formulation</b>	PBS, 50% glycerol, 0.05% Proclin 300, 0.05%BSA
<b>Source</b>	Monoclonal, Rabbit,IgG
<b>Dilution</b>	IHC 1:100-300 Note: For IHC, we suggest antigen retrieval with TE buffer pH 9.0
<b>Concentration</b>	0.5 mg/ml
<b>Purity</b>	≥90%
<b>Storage Stability</b>	-15° C to -25° C/1 year(Do not lower than -25° C)
<b>Synonyms</b>	SLC45A3 ; PCANAP6 ; PRST ; Solute carrier family 45 member 3 ; Prostate cancer-associated protein 6 ; Prostein ;
<b>Observed Band</b>	61kD
<b>Calculated Molecular Weight</b>	
<b>Cell Pathway</b>	Membrane; Multi-pass membrane protein.
<b>Tissue Specificity</b>	Prostate specific. Expressed in all prostatic glandular cells. Expressed both in normal and cancerous prostates. {ECO:0000269 PubMed:11245466, ECO:0000269 PubMed:14997204}.
<b>Function</b>	Proton-associated sucrose transporter. May be able to transport also glucose and fructose. {ECO:0000250 UniProtKB:Q8K0H7}.
<b>Background</b>	Predicted to enable sucrose:proton symporter activity. Predicted to be involved in positive regulation of small molecule metabolic process; regulation of oligodendrocyte differentiation; and sucrose transport. Predicted to be located in plasma membrane. Predicted to be active in membrane. [provided by Alliance of Genome Resources, Apr 2022]
<b>matters needing attention</b>	Avoid repeated freezing and thawing!





### Usage suggestions

This product can be used in immunological reaction related experiments. For more information, please consult technical personnel.



-Immunohistochemical analysis of paraffin-embedded human Prostate tissue. 1,primary Antibody was diluted at 1:200(4℃,overnight). 2, EDTA pH 9.0 was used for antibody retrieval(>98℃,20min). 3,Secondary antibody was diluted at 1:200(room tempeRature, 30min).

## 杭州臻优品生物科技有限公司

### 热销产品:

蛋白、一抗、抗体对、ELISA试剂盒、生化试剂盒  
CCK8试剂盒、QPCR检测试剂盒

### 检测服务:

ELISA检测及定制服务 | 生化检测 | PCR、QPCR检测 | WB检测  
ICO-IP检测 | 切片 | 染色 | 免疫组化 | 免疫荧光 | 透射电镜全套  
| 宏基因组、转录组、基因组、蛋白组、代谢组测序



关注官网



关注客服