



SLFN12 Rabbit mAb

Catalog No	YP-rAb-17687
Isotype	IgG
Reactivity	Human
Applications	WB,FC
Gene Name	SLFN12
Protein Name	Ribonuclease SLFN12;Schlafen family member 12;
Purification Process	Protein A
Specificity	Endogenous
Formulation	PBS, 50% glycerol, 0.05% Proclin 300, 0.05%BSA
Source	Monoclonal, Rabbit,IgG
Dilution	WB 1:1000-5000; FC 1:100-300
Concentration	0.5 mg/ml
Purity	≥90%
Storage Stability	-15° C to -25° C/1 year(Do not lower than -25° C)
Synonyms	SLFN12 ; Ribonuclease SLFN12 ; Schlafen family member 12 ;
Observed Band	64kD
Calculated Molecular Weight	
Cell Pathway	Nucleus. Cytoplasm, cytosol.
Tissue Specificity	
Function	Ribonuclease which is part of an E2/17beta-estradiol-induced pro-apoptotic signaling pathway. E2 stabilizes the PDE3A/SLFN12 complex in the cytosol, promoting the dephosphorylation of SLFN12 and activating its pro-apoptotic ribosomal RNA/rRNA ribonuclease activity. This apoptotic pathway might be relevant in tissues with high concentration of E2 and be for instance involved in placenta remodeling (PubMed:31420216, PubMed:34272366, PubMed:34707099, PubMed:35104454). May play a role in cell differentiation (PubMed:30045019). {ECO:0000269 PubMed:30045019, ECO:0000269 PubMed:31420216, ECO:0000269 PubMed:34272366, ECO:0000269 PubMed:34707099, ECO:0000269 PubMed:35104454}.
Background	Enables RNA nuclease activity and ribosome binding activity. Involved in apoptotic signaling pathway and rRNA catabolic process. Part of cytosol and nucleus. [provided by Alliance of Genome Resources, Feb 2025]

杭州臻优品生物科技有限公司

热销产品:

蛋白、一抗、抗体对、ELISA试剂盒、生化试剂盒
CCK8试剂盒、QPCR检测试剂盒

检测服务:

ELISA检测及定制服务 | 生化检测 | PCR、QPCR检测 | WB检测
ICO-IP检测 | 切片 | 染色 | 免疫组化 | 免疫荧光 | 透射电镜全套
| 宏基因组、转录组、基因组、蛋白组、代谢组测序



关注官网



关注客服

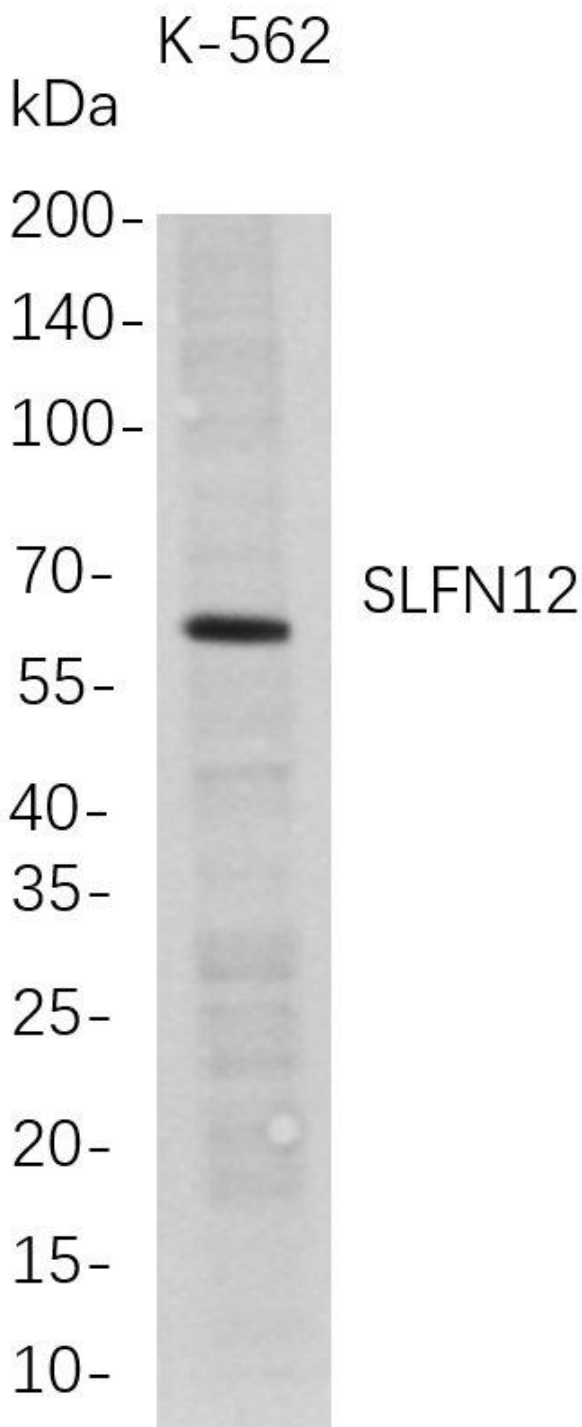


matters needing attention

Avoid repeated freezing and thawing!

Usage suggestions

This product can be used in immunological reaction related experiments. For more information, please consult technical personnel.



Western Blot analysis of K-562 whole cell lysates were separated by 4-20% SDS-PAGE, and the membrane was blotted with anti-SLFN12 rabbit mAb. The HRP-conjugated Goat anti-Rabbit IgG(H + L) antibody was used to detect the antibody.

杭州臻优品生物科技有限公司

热销产品:

蛋白、一抗、抗体对、ELISA试剂盒、生化试剂盒
CCK8试剂盒、QPCR检测试剂盒

检测服务:

ELISA检测及定制服务 | 生化检测 | PCR、QPCR检测 | WB检测
ICO-IP检测 | 切片 | 染色 | 免疫组化 | 免疫荧光 | 透射电镜全套
| 宏基因组、转录组、基因组、蛋白组、代谢组测序



关注官网



关注客服



杭州臻优品生物科技有限公司

热销产品:

蛋白、一抗、抗体对、ELISA试剂盒、生化试剂盒
CCK8试剂盒、QPCR检测试剂盒

检测服务:

ELISA检测及定制服务 | 生化检测 | PCR、QPCR检测 | WB检测
ICO-IP检测 | 切片 | 染色 | 免疫组化 | 免疫荧光 | 透射电镜全套
| 宏基因组、转录组、基因组、蛋白组、代谢组测序



关注官网



关注客服