



PACSIN3 Rabbit mAb

Catalog No	YP-rAb-17683
Isotype	IgG
Reactivity	Human
Applications	WB,IHC,IF,ICC,FC,IP
Gene Name	PACSIN3
Protein Name	Protein kinase C and casein kinase substrate in neurons protein 3;SH3 domain-containing protein 6511;
Purification Process	Protein A
Specificity	Endogenous
Formulation	PBS, 50% glycerol, 0.05% Proclin 300, 0.05%BSA
Source	Monoclonal, Rabbit,IgG
Dilution	WB 1:1000-5000; IHC 1:100-300; ICC/IF 1:100-300; FC 1:100-300; IP 1:50-100 Note: For IHC, we suggest antigen retrieval with TE buffer pH 9.0
Concentration	0.5 mg/ml
Purity	≥90%
Storage Stability	-15° C to -25° C/1 year(Do not lower than -25° C)
Synonyms	PACSIN3 ; Protein kinase C and casein kinase substrate in neurons protein 3 ; SH3 domain-containing protein 6511 ;
Observed Band	47kD
Calculated Molecular Weight	
Cell Pathway	Cytoplasm. Cell membrane; Peripheral membrane protein; Cytoplasmic side. Note=Detected at the inner aspect of the plasma membrane in myotubes..
Tissue Specificity	Widely expressed, with highest levels in heart and skeletal muscle, intermediate levels in placenta, liver and pancreas, and very low levels in brain, lung and kidney. {ECO:0000269 PubMed:11082044, ECO:0000269 PubMed:11179684}.
Function	Plays a role in endocytosis and regulates internalization of plasma membrane proteins. Overexpression impairs internalization of SLC2A1/GLUT1 and TRPV4 and increases the levels of SLC2A1/GLUT1 and TRPV4 at the cell membrane. Inhibits the TRPV4 calcium channel activity (By similarity). {ECO:0000250, ECO:0000269 PubMed:11082044}.
Background	This gene is a member of the protein kinase C and casein kinase substrate in neurons family. The encoded protein is involved in linking the actin cytoskeleton with vesicle formation. Alternative splicing results in multiple transcript variants. [provided by RefSeq, May 2010]



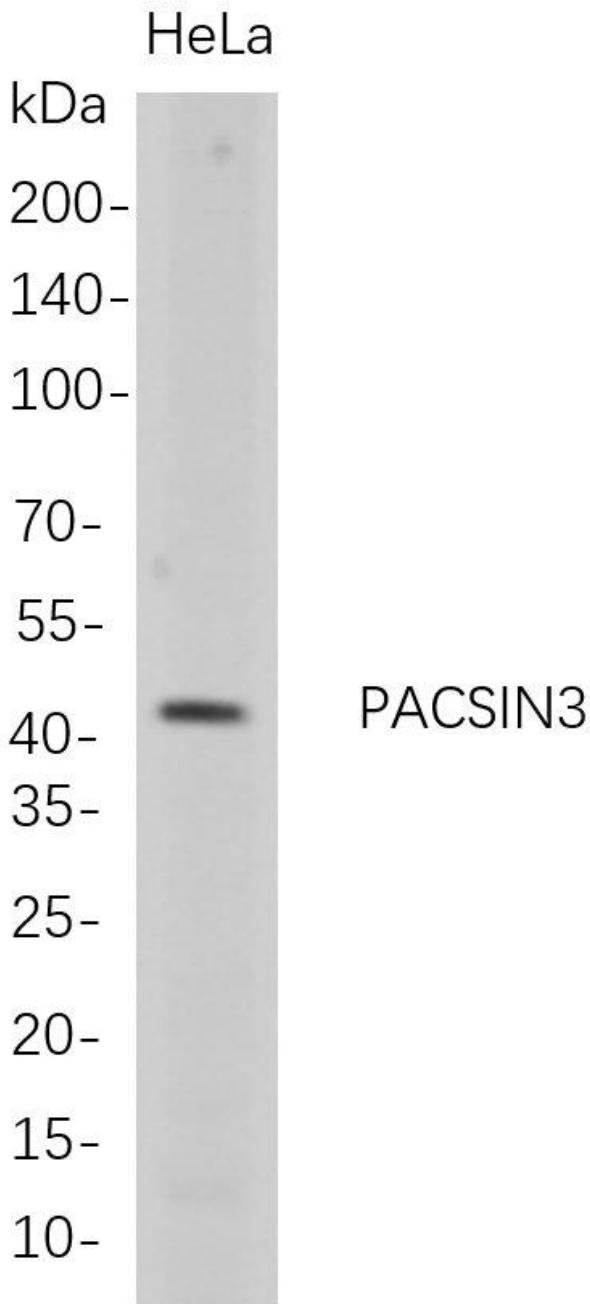


matters needing attention

Avoid repeated freezing and thawing!

Usage suggestions

This product can be used in immunological reaction related experiments. For more information, please consult technical personnel.



Western Blot analysis of HeLa whole cell lysates were separated by 4-20% SDS-PAGE, and the membrane was blotted with anti-PACSIN3 rabbit mAb. The HRP-conjugated Goat anti-Rabbit IgG(H + L) antibody was used to detect the antibody.

